

Figure Legends

Figure 1. Hong Kong Liver Cancer staging

The Hong Kong Liver Cancer staging scheme as proposed by Yau et al (2014).

Figure 2. Kaplan-Meier Curves

Stratification by BCLC staging (A), HKLC-5 staging (B) and HKLC-9 staging (C). All three staging systems demonstrate separation of survival curves. The HKLC-9 staging has several overlaps, notably in stages IIIa, IIIb, IVa, and Va. Number at risk tables are attached below each subfigure.

Figure 3. Calibration plots for HKLC-5 and HKLC-9

Calibration plots for HKLC-9 (A) and for HKLC-5 (B). They plot the validation cohort patients' actual survival time (y-axis) versus the HKLC staging system's predicted survival (x-axis). The closer points are to the reference line (blue), the better the calibration. The dotted line represents the least-squares trendline. Both HKLC-9 and HKLC-5 demonstrate moderate to good calibration with $R^2 = 0.9055$ and $R^2 = 0.9510$, respectively.

Supplemental Figure 1. Kaplan-Meier Curves for HBV and HCV sub-cohorts

Stratification by BCLC staging (A), HKLC-9 staging (C) and HKLC-5 staging (E) in HBV cohort. Stratification by BCLC staging (B), HKLC-9 staging (D) and HKLC-5 staging (F) in HCV cohort. Same color coding as figure 2. Number at risk tables provided (supplemental table 2).

Supplemental Figure 2. Kaplan-Meier Curves for pre and post-2008 subcohorts

Stratification by BCLC staging (A), HKLC-9 staging (C) and HKLC-5 staging (E) in HBV cohort. Stratification by BCLC staging (B), HKLC-9 staging (D) and HKLC-5 staging (F) in HCV cohort. Same color coding as figure 2. Number at risk tables provided (supplemental table 3).

Supplemental Figure 3. Kaplan-Meier Curves for pre and post-2008 subcohorts (confirmed dead patients only)

Same labeling as Supplemental Figure 2.

Supplemental Table 1. Number of Patients on Cross-Tabulation by HKLC and BCLC

	BCLC A	BCLC B	BCLC C	BCLC D	Total HKLC
HKLC I	77	19	4	0	100
HKLC II	55	61	145	0	261
IIa	25	4	76	0	105
IIb	30	57	69	0	156
HKLC III	5	64	193	0	262
IIIa	5	16	42	0	63
IIIb	0	48	151	0	199
HKLC IV	0	2	162	0	164
IVa	0	1	84	0	85
IVb	0	1	78	0	79
HKLC V	0	0	32	62	94
Va	0	0	7	15	22
Vb	0	0	25	47	72
Total BCLC	137	146	536	62	

Supplemental Table 2. Number At Risk Table for HBV, HCV subcohorts

<HBV subcohort>

Stage\Months	0	10	20	30	40	50	60
BCLC A	22	19	15	15	12	9	8
BCLC B	21	14	10	3	1	1	0
BCLC C	83	39	20	14	8	4	2
BCLC D	6	1	1	0	0	0	0
HKLC I	14	13	10	10	9	7	6
HKLC II	42	31	20	16	9	5	2
HKLC III	34	19	13	4	2	1	1
HKLC IV	31	8	2	2	1	1	1
HKLC V	11	2	1	0	0	0	0
HKLC I	14	13	10	10	9	7	6
HKLC IIa	14	10	5	4	3	0	0
HKLC IIb	28	21	15	12	6	5	2
HKLC IIIa	5	4	4	2	1	1	1
HKLC IIIb	29	15	9	2	1	0	0
HKLC IVa	22	7	2	2	1	1	1
HKLC IVb	9	1	0	0	0	0	0
HKLC Va	3	1	1	0	0	0	0
HKLC Vb	8	1	0	0	0	0	0

<HCV Subcohort>

Stage\Months	0	10	20	30	40	50	60
BCLC A	79	53	39	27	20	15	11
BCLC B	78	44	27	12	6	5	3
BCLC C	238	100	53	27	18	12	10
BCLC D	37	6	4	4	4	1	1
HKLC I	67	40	32	26	18	13	10
HKLC II	114	82	46	23	17	12	8
HKLC III	130	51	28	11	5	5	4
HKLC IV	70	21	12	5	3	1	1
HKLC V	51	9	5	5	5	2	2
HKLC I	67	40	32	26	18	13	10
HKLC IIa	63	46	26	14	10	6	4
HKLC IIb	51	36	20	9	7	6	4
HKLC IIIa	36	18	12	5	2	2	1
HKLC IIIb	94	33	16	6	3	3	3
HKLC IVa	30	9	4	2	1	0	0
HKLC IVb	40	12	8	3	2	1	1
HKLC Va	14	5	4	4	4	2	2
HKLC Vb	37	4	1	1	1	0	0

Supplemental Table 3. Number At Risk Table for pre and post-2008 subcohorts

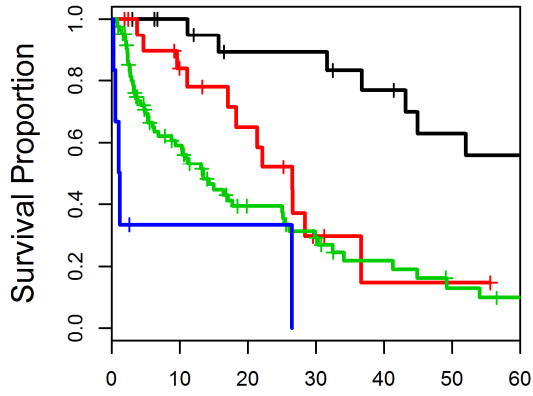
<pre-2008 subcohort>

Stage\Months	0	10	20	30	40	50	60
BCLC A	50	41	34	30	26	19	15
BCLC B	49	31	26	14	10	9	6
BCLC C	202	102	54	32	27	22	18
BCLC D	4	2	2	2	1	1	1
HKLC I	28	25	20	17	16	13	11
HKLC II	95	74	55	40	31	24	17
HKLC III	120	56	31	15	13	11	9
HKLC IV	51	19	8	4	3	2	2
HKLC V	33	4	2	2	2	1	1
HKLC I	28	25	20	17	16	13	11
HKLC IIa	25	19	14	12	10	5	5
HKLC IIb	70	55	41	28	21	19	12
HKLC IIIa	27	13	8	6	6	5	3
HKLC IIIb	93	43	23	9	7	6	6
HKLC IVa	28	12	5	2	1	1	1
HKLC IVb	23	7	3	2	2	1	1
HKLC Va	10	3	2	2	2	1	1
HKLC Vb	23	1	0	0	0	0	0

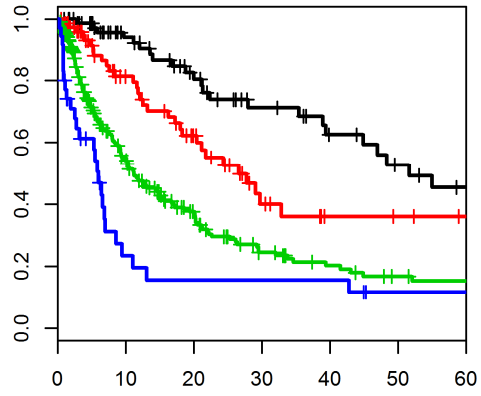
<post-2008 Subcohort>

Stage\Months	0	10	20	30	40	50	60
BCLC A	87	54	37	25	18	11	8
BCLC B	97	54	33	15	6	4	1
BCLC C	333	146	69	34	16	6	3
BCLC D	36	5	4	3	3	0	0
HKLC I	72	43	32	26	16	9	7
HKLC II	166	113	63	33	18	11	4
HKLC III	141	54	29	8	2	0	0
HKLC IV	113	38	14	6	3	0	0
HKLC V	61	11	5	4	4	1	1
HKLC I	72	43	32	26	16	9	7
HKLC IIa	80	55	29	16	10	6	3
HKLC IIb	86	58	34	17	8	5	1
HKLC IIIa	36	16	12	4	0	0	0
HKLC IIIb	105	38	17	4	2	0	0
HKLC IVa	57	21	7	4	2	0	0
HKLC IVb	56	17	7	2	1	0	0
HKLC Va	12	5	4	3	3	1	1
HKLC Vb	49	6	1	1	1	0	0

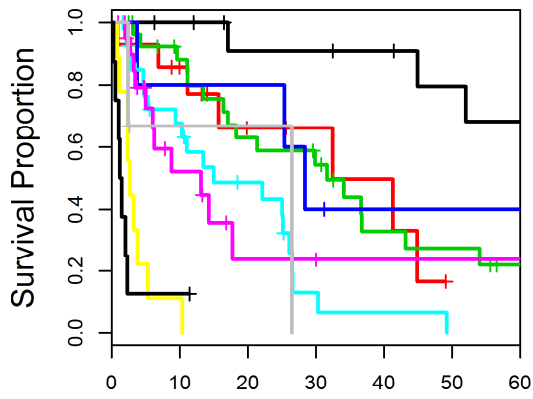
a) BCLC on HBV



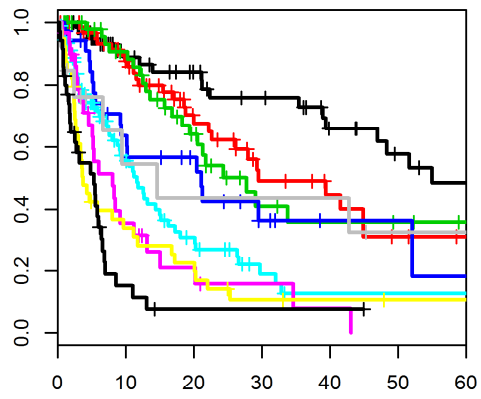
b) BCLC on HCV



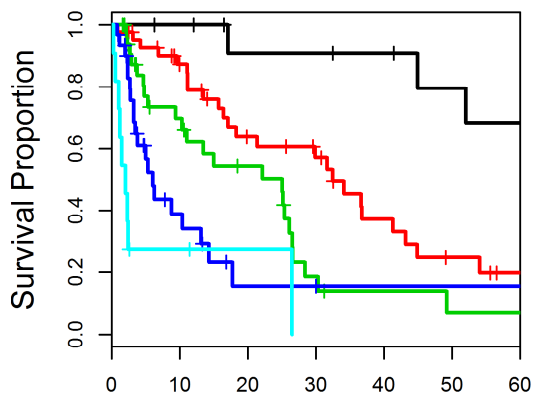
c) HKLC-9 on HBV



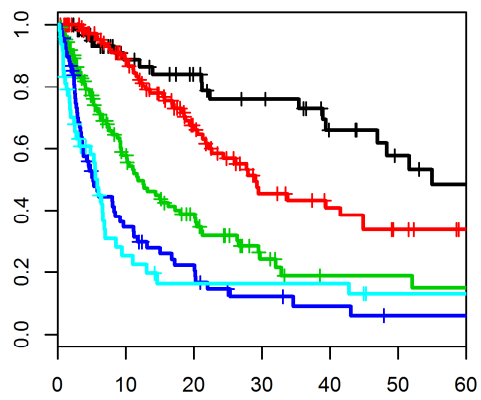
d) HKLC-9 on HCV



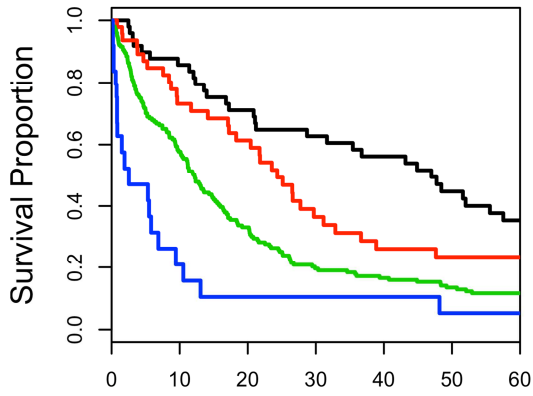
e) HKLC-5 on HBV



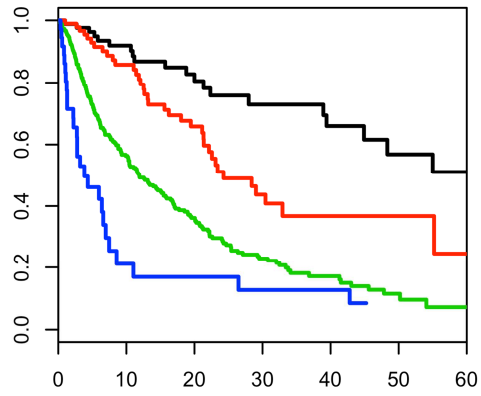
f) HKLC-5 on HCV



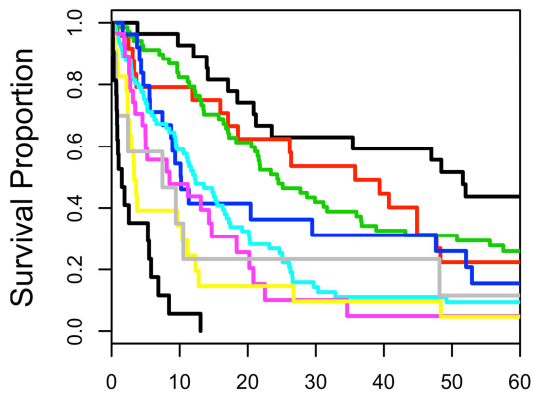
a) BCLC before 2008



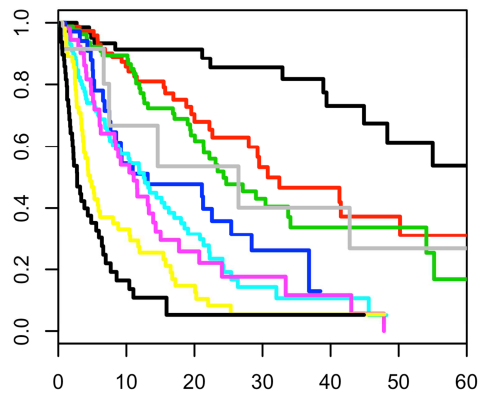
b) BCLC after 2008



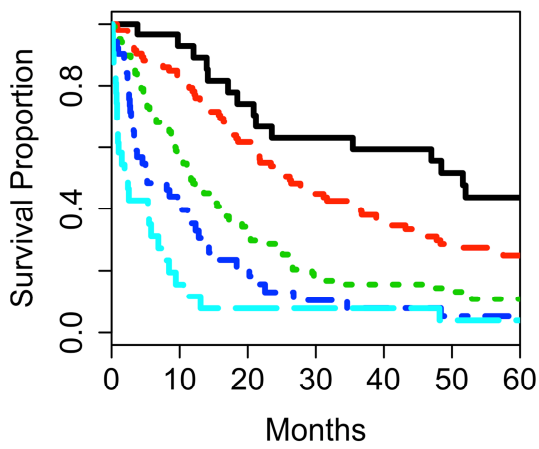
c) HKLC-9 before 2008



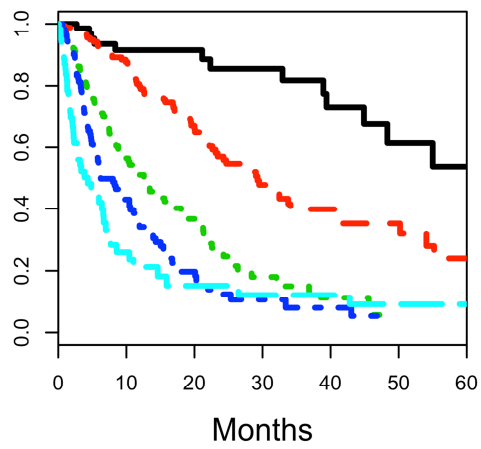
d) HKLC-9 after 2008



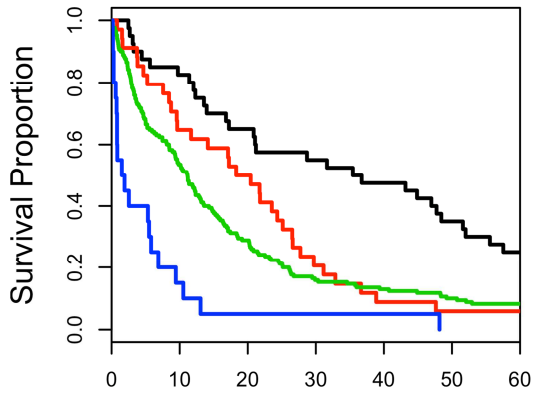
e) HKLC-5 before 2008



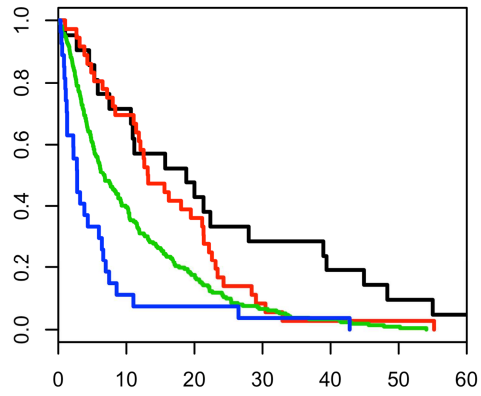
f) HKLC-5 after 2008



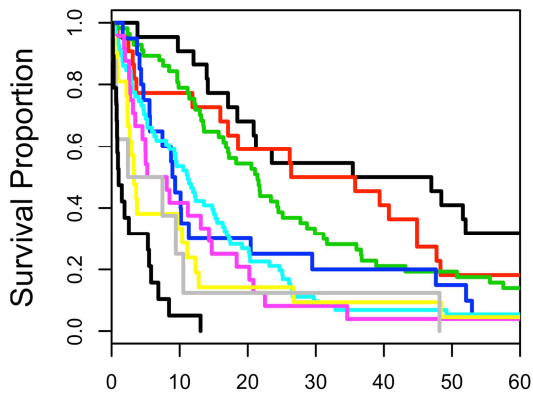
a) BCLC pre-2008 confirmed dead only



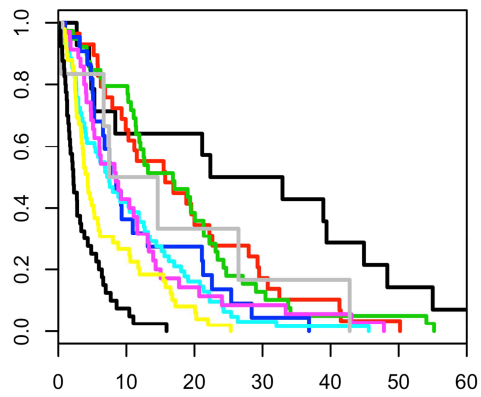
b) BCLC pre-2008 confirmed dead only



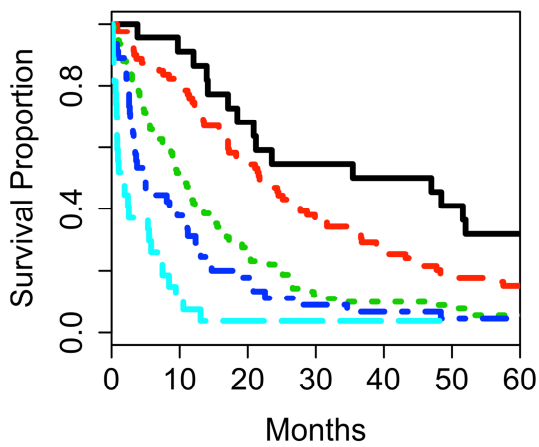
c) HKLC-9 pre-2008 confirmed dead only



d) HKLC-9 post-2008 confirmed dead only



e) HKLC-5 post-2008 confirmed dead only



f) HKLC-5 post-2008 confirmed dead only

