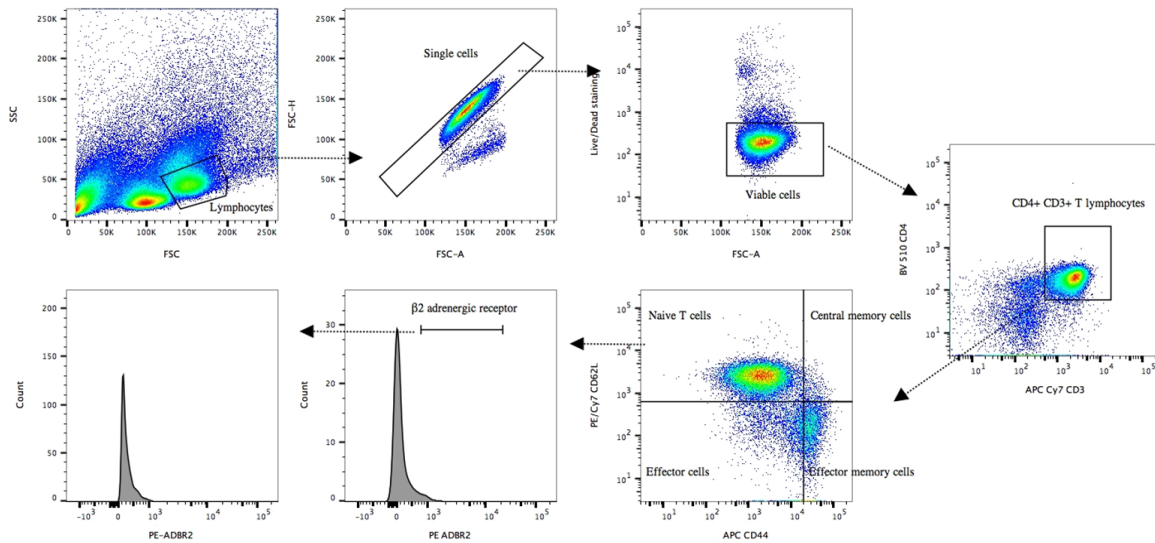


# Supplementary Figures

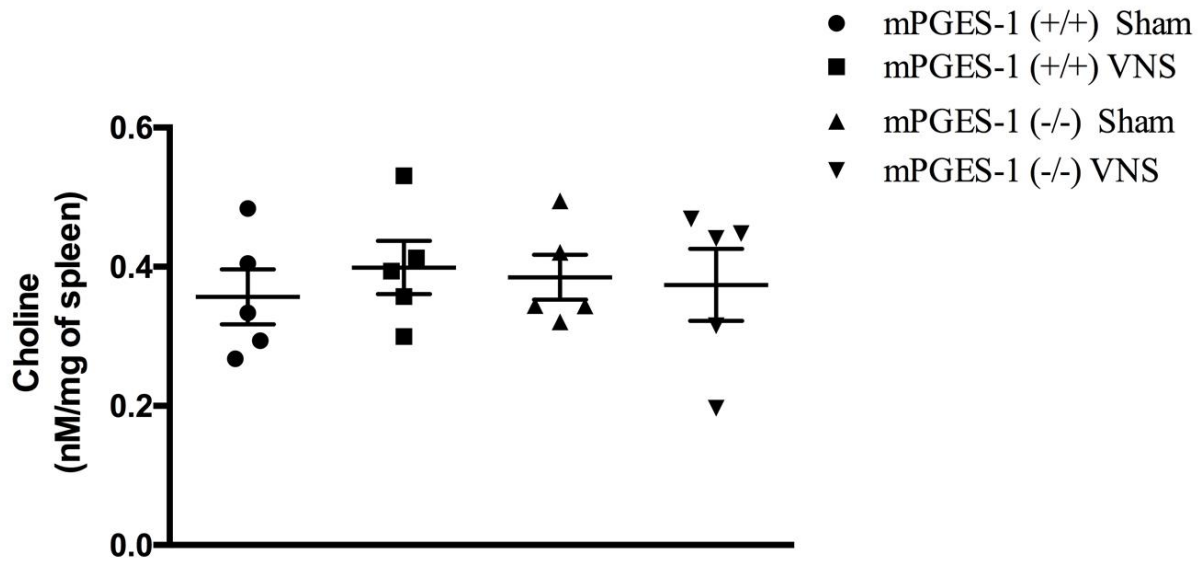
S1 Fig.



**S1 Fig. Gating strategy for CD4<sup>+</sup> CD3<sup>+</sup> T lymphocytes and their different subsets.**

Lymphocytes were gated using SSC-A and FSC characteristics followed by stepwise exclusion of non-single cells and non-viable cells. In viable, single CD4 T lymphocytes (CD4<sup>+</sup> CD3<sup>+</sup>) CD44 and CD62L were used to distinguish between different CD4<sup>+</sup> T cell subsets. Corresponding  $\beta_2$  expression on these subsets were measured as %  $\beta_2^+$  cells of parent population or mean fluorescence intensity using histograms.

S2 Fig.



S2 Fig. Choline measurement in mouse spleen following SHAM and VNS treatment.

mPGES-1 (+/+) and (-/-) mice underwent SHAM and VNS for 30 minutes and spleens were homogenized for choline measurement. No differences were observed between both treatment groups and mPGES-1 depletion does not affect the choline levels. Samples were run as duplicates during the choline assay and values are represented as mean  $\pm$ SEM from 5 individual animals per treatment group ( $p > 0.05$ ; One-way ANOVA)

S3 Fig.