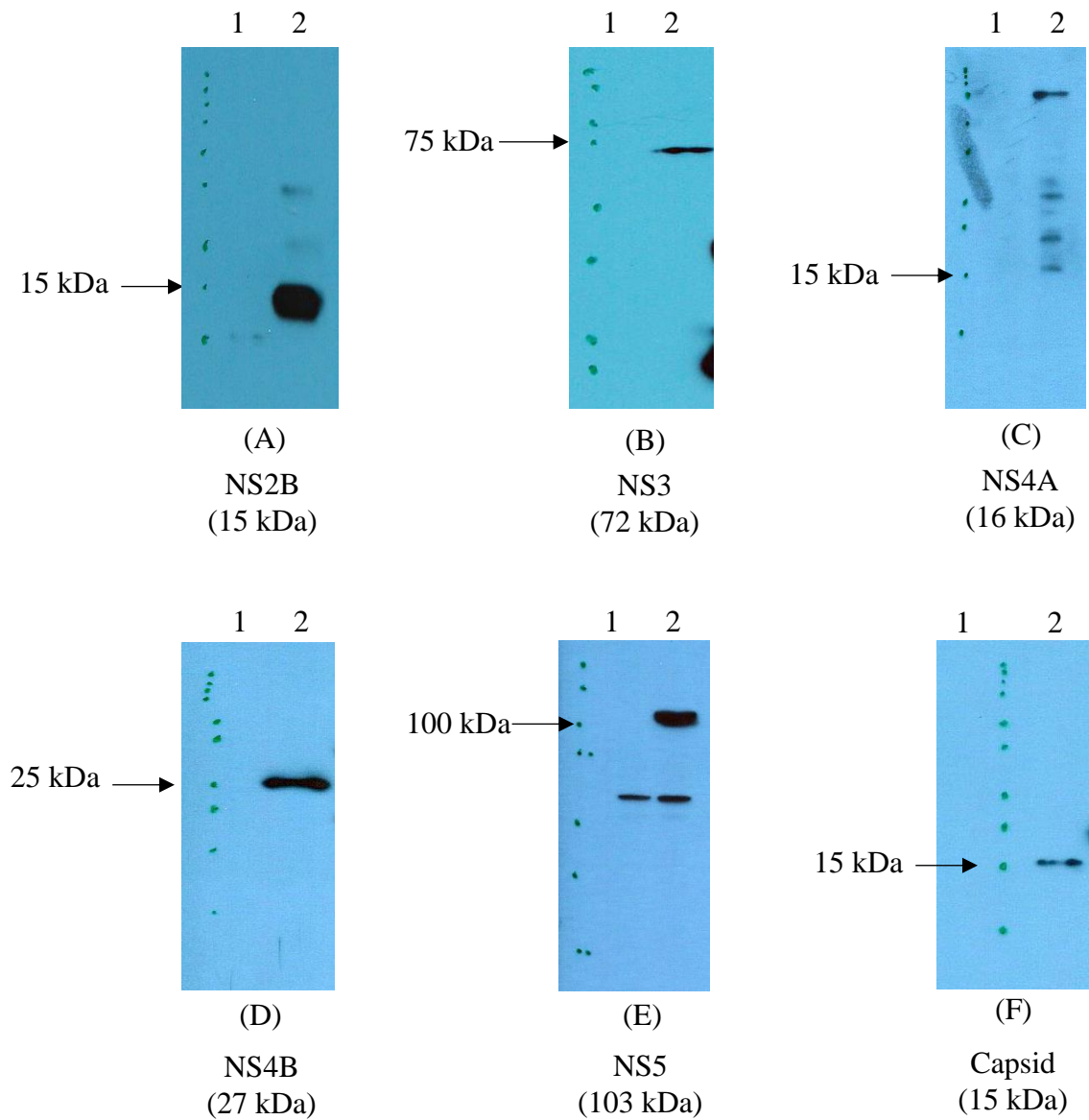


**S1 Fig**



**S1 Fig. Western blot detection of each dengue protein in HEK293T/17 infected cells.** Lane 1 is mock-infected cell lysate. Lane 2 is DENV-infected cell lysate. 50  $\mu$ g of protein samples were loaded onto SDS-PAGE. Precision Plus Protein<sup>TM</sup> standards was used (BioRad). Each specific antibody against Dengue proteins were employed for western blot detection as described.