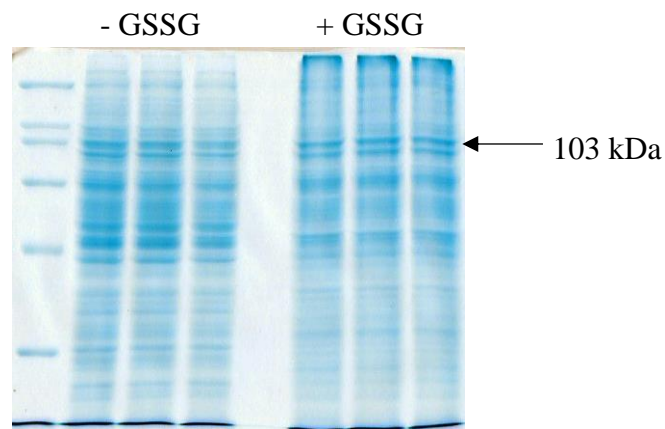
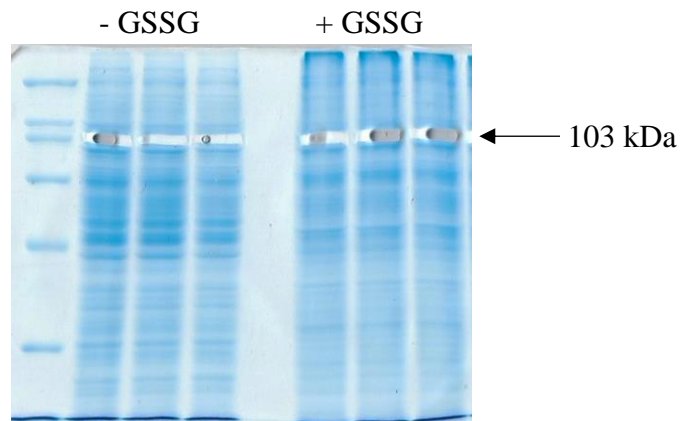


Before gel cutting



After gel cutting



**S3 Fig. SDS gels of DENV 2 infected cell lysates used for mass spectrometry determination of NS5 glutathionylation sites.** The first lane is molecular weight marker and the other lanes are DENV 2 infected HEK293T/17 cell lysates. The gel slices of about 103 kDa were excised and sent for LC/MS/MS analysis. The LC/MS/MS was performed by Dr. Sze Siu Kwan at the NTU Mass Spec core facility at the School of Biological Sciences, Nanyang Technological University, Singapore.