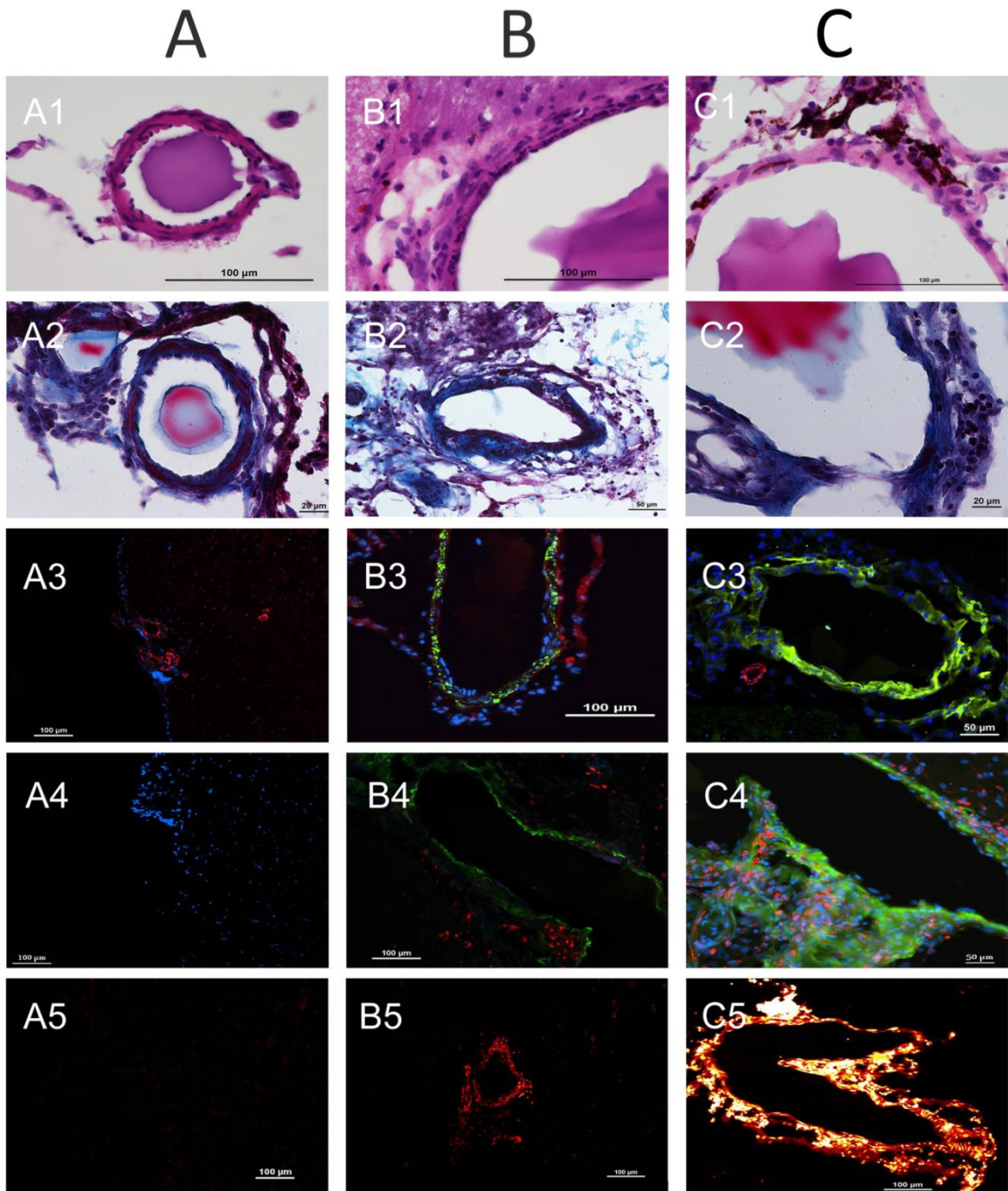
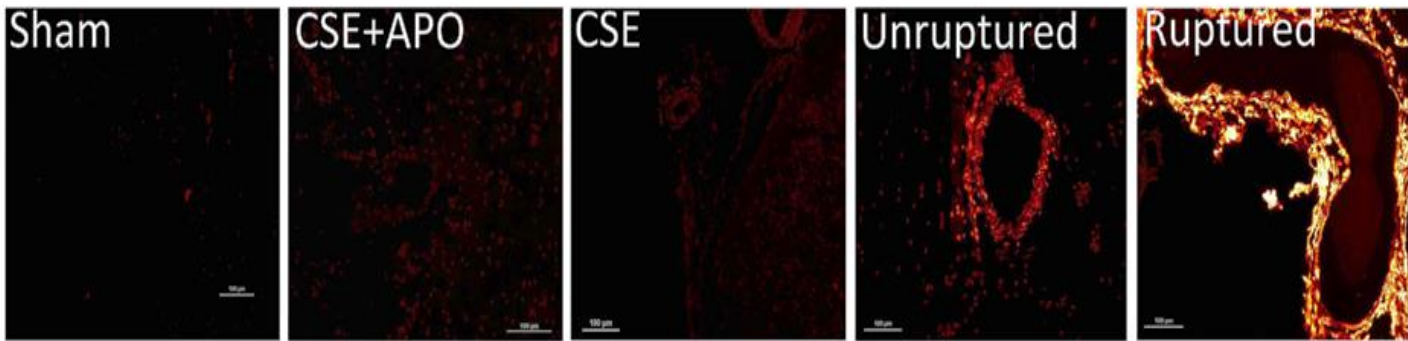


# SUPPLEMENTAL MATERIAL



## Supplemental Figure 1:

Hematoxylin and Eosin (panel 1), and trichrome staining (panel 2) of cerebral vessels from sham operated mice (A1-2), CA unruptured (B1-2), and CA ruptured (C1-2). NOX1 immunostaining (green) is shown in panel 3 and 4 (A-sham, B-unruptured CA; C-ruptured CA), samples were co-stained with either SMC-22 $\alpha$  for SMCs (red) in panel 3 or CD68 for macrophages (red) in panel 4. *In situ* superoxide imaging, as carried out with dihydroethidium is shown in panel 5 (A-sham, B-unruptured CA; C-ruptured CA).



**Supplemental Figure II:**

Free radical expression was determined in mice exposed to CSE in the presence and absence of apocynin, and during CA formation and rupture.