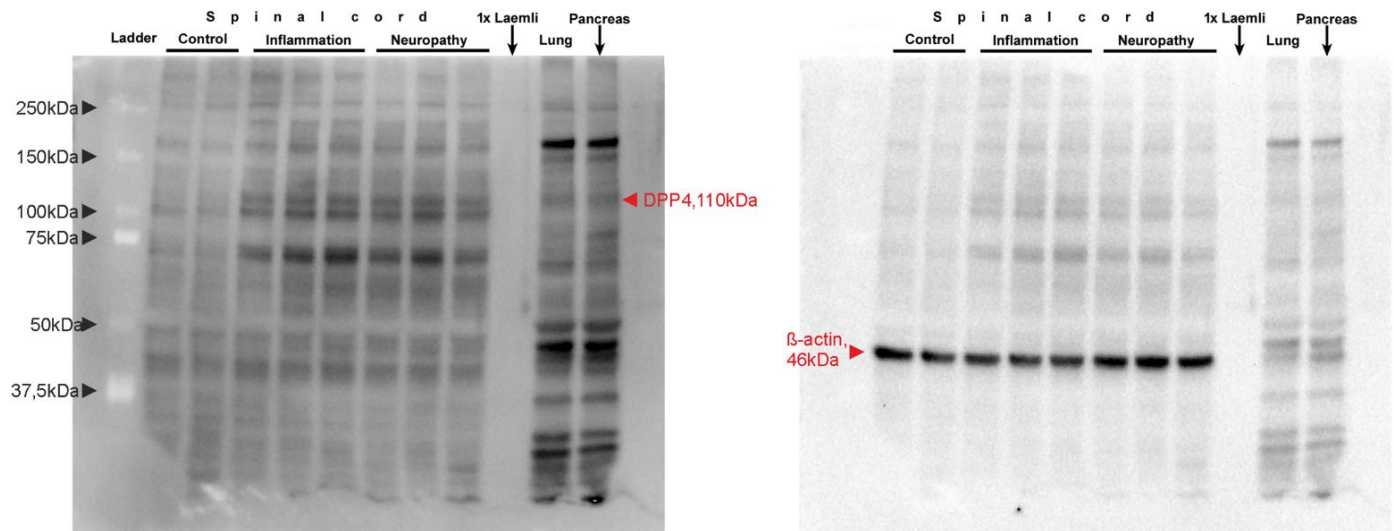


# Glial cell type-specific changes in spinal dipeptidyl peptidase 4 expression and effects of its inhibitors in inflammatory and neuropathic pain

**Authors:** Kornél Király, Márk Kozsurek, Erika Lukácsi, Benjamin Barta, Alán Alpár, Tamás Balázsa, Csaba Fekete, Szabon Judit, Zsuzsanna Helyes, Kata Bölcskei, Valéria Tékus, Zsuzsanna E. Tóth, Károly Pap, Gábor Gerber, Zita Puskár



**Supplementary Figure S1.** The complete membrane of whole lane Western blots run on a 6% SDS gel and processed for DPP4 immunohistochemistry. Protein free 1xLaemli solution and lung/pancreas tissues were used as negative and positive controls, respectively. The blotting membrane was incubated first with DPP4 antibody then after stripping with anti- $\beta$  actin as loading control.