

Citalopram inhibits platelet function

independently of SERT-mediated 5-HT transport

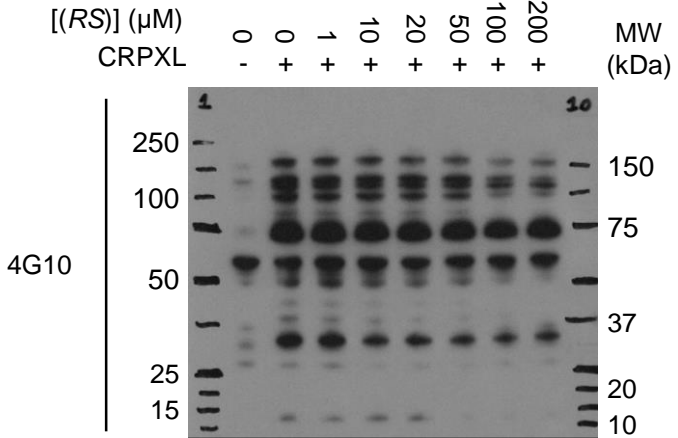
Harvey G. Roweth¹, Ruoling Yan¹, Nader H. Bedwani¹, Alisha Chauhan¹, Nicole Fowler¹, Alice H. Watson¹, Jean-Daniel Malcor², Stewart O. Sage¹ and *Gavin E. Jarvis¹

**Supplementary data showing western blot films
generated during the study**

Supplementary Figure S1

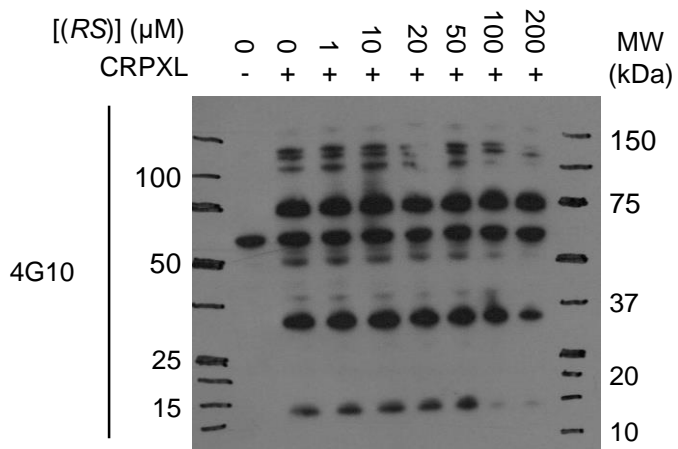
Donor: A

* Blot ID: HGR_039



Donor: F

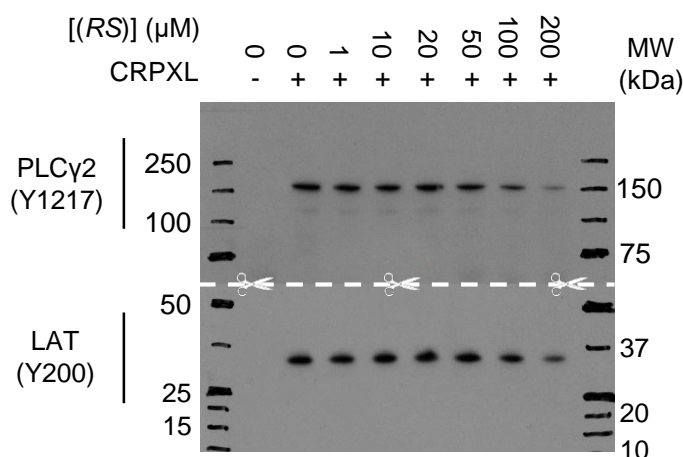
Blot ID: HGR_020



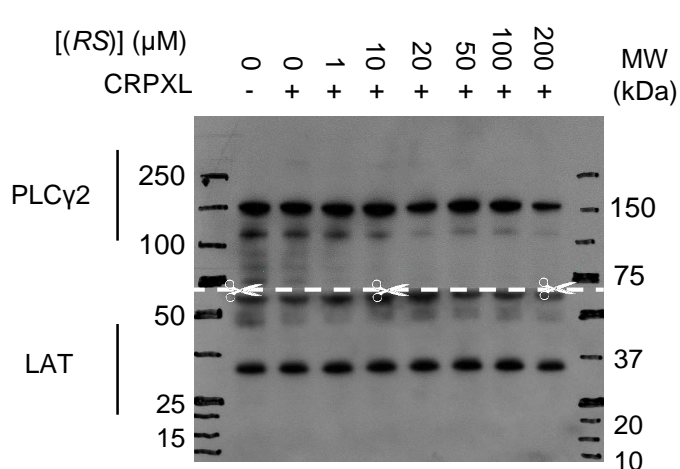
Supplementary Figure S1 (continued)

Donor: E

* Blot ID: HGR_037

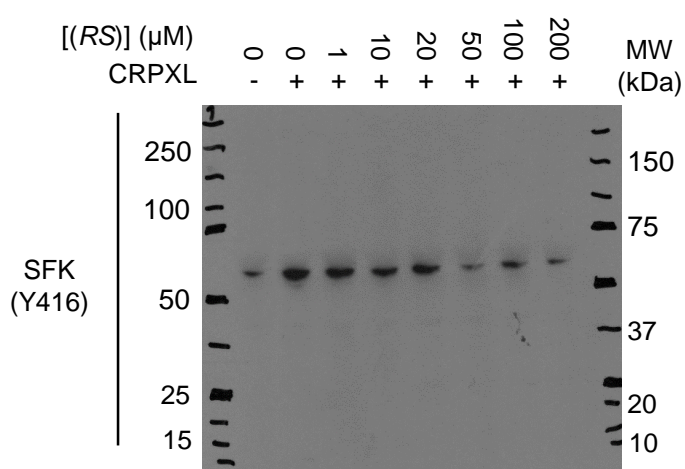


Blot ID: HGR_038

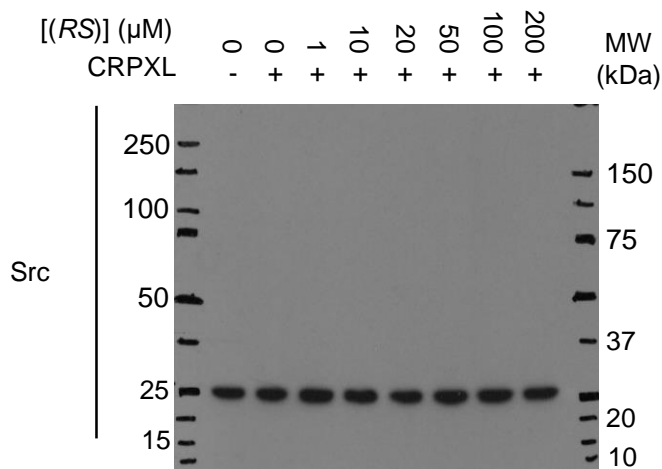


Donor: E

* Blot ID: HGR_062



Blot ID: HGR_063



Supplementary Figure S1 – Pilot study data

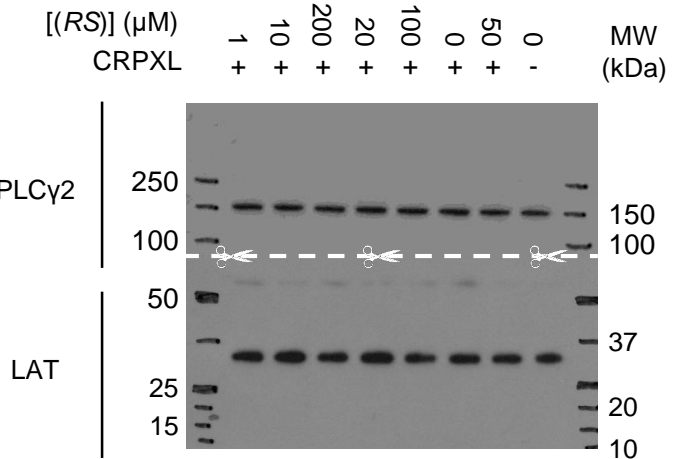
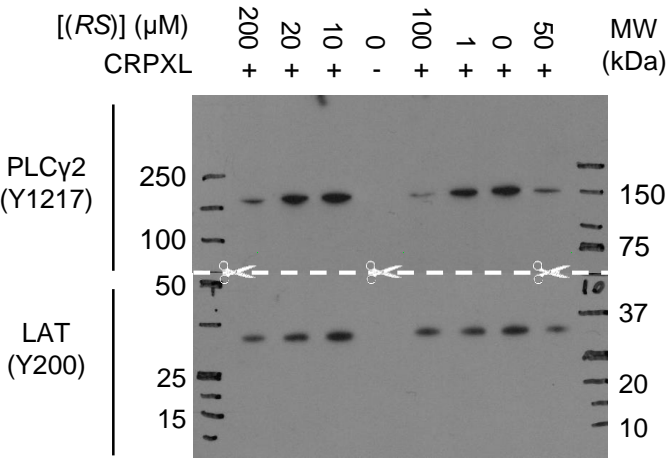
Unprocessed images of X-ray films of western blots generated in a pilot study. Samples were probed with primary antibodies against phospho-tyrosine (4G10) (N = 2 donors), and phospho-PLCγ2 (Y1217), phospho-LAT (Y200), phospho-Src family kinases (SFK) (Y416), PLCγ2, LAT and Src (N = 1 donor). Films shown in the main manuscript are indicated with *. For undetermined reasons, the Src blot (HGR_063, Donor E) produced a band at 25 kDa, despite Src having a molecular weight of ~60 kDa. All subsequent Src blots (Supplementary Figure S3) show bands at ~60 kDa. None of these images or any pilot study data were used in the quantitative analysis shown in Fig. 5b. 3 blood donors were used in total, labelled A, E and F.

Supplementary Figure S2 (continued)

Donor: C

Blot ID: HGR_046

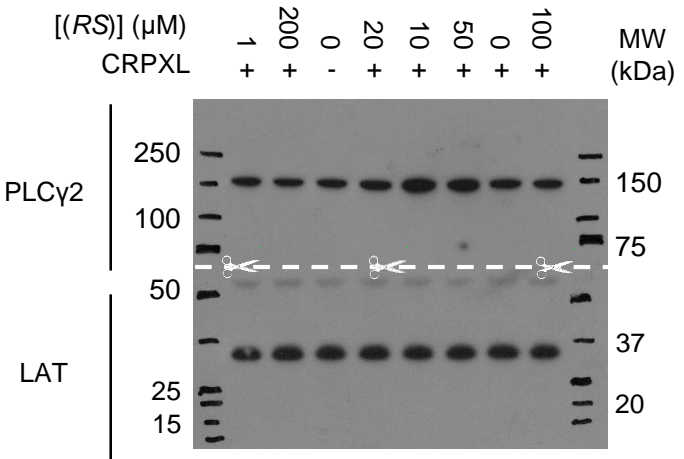
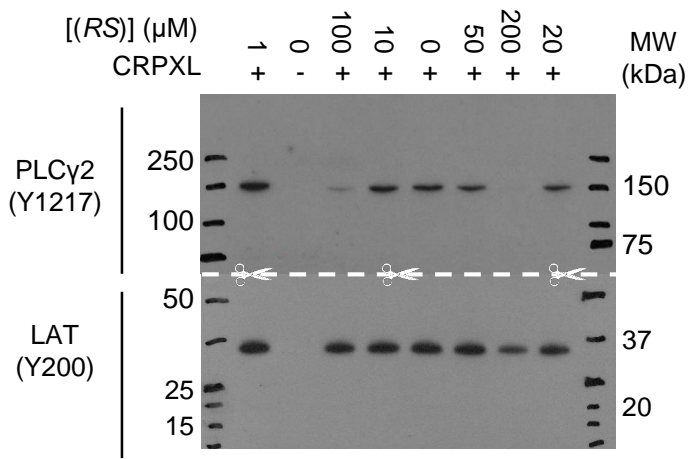
Blot ID: HGR_047



Donor: D

Blot ID: HGR_048

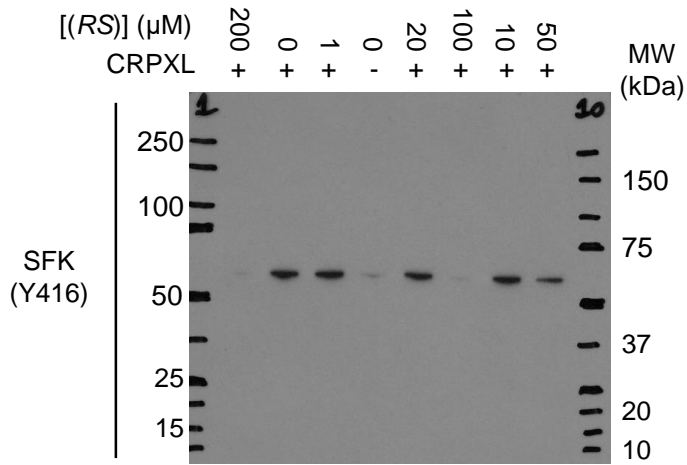
Blot ID: HGR_049



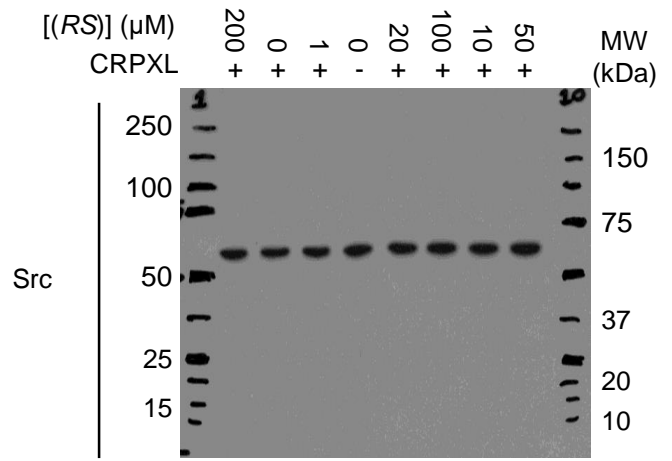
Supplementary Figure S3

Donor: A

Blot ID: HGR_070

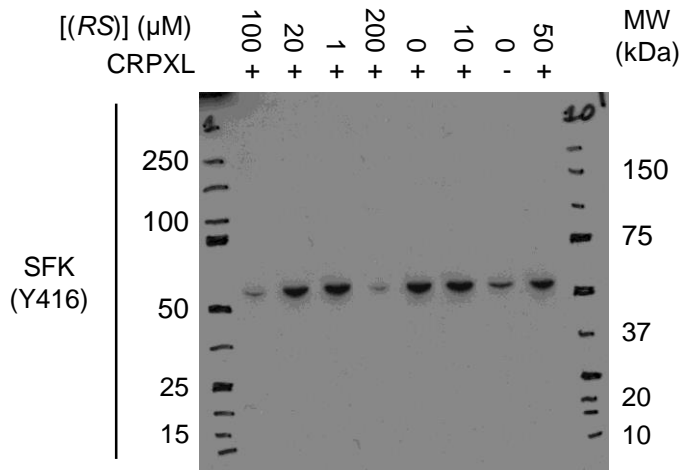


Blot ID: HGR_071

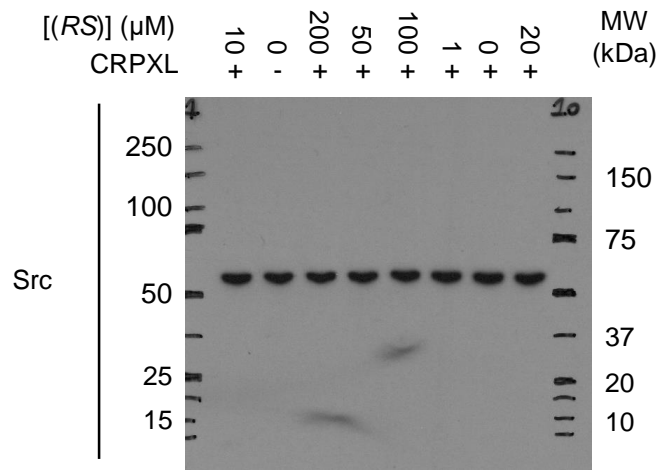


Donor: B

Blot ID: HGR_068

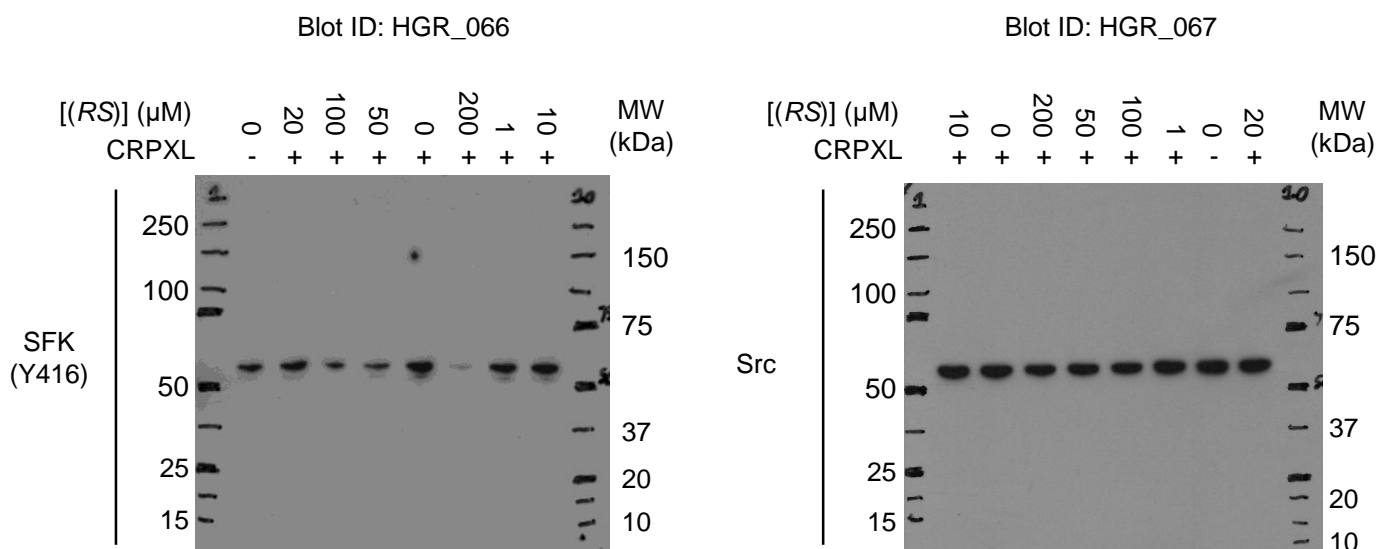


Blot ID: HGR_069

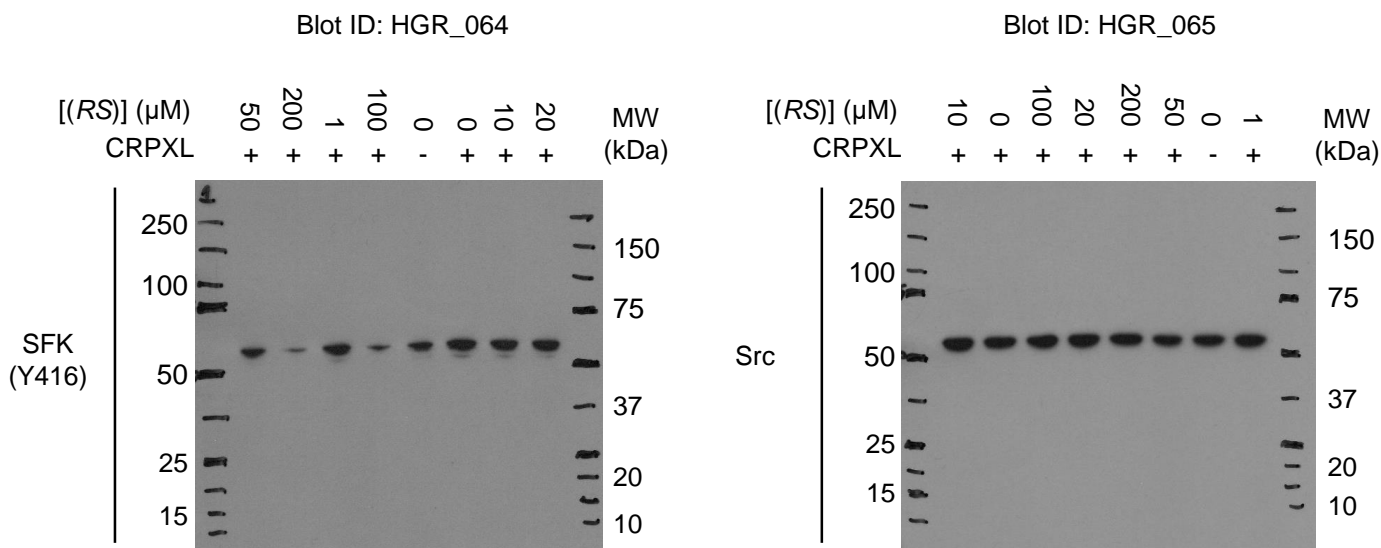


Supplementary Figure S3 (continued)

Donor: C



Donor: D



Supplementary Figure S3

Unprocessed images of X-ray films from western blots used to quantify phospho-Src family kinases (SFK) (Y416) and Src. Samples from 4 blood donors were used in total, labelled A-D, which match donors used in Supplementary Figure S2. No data were obtained for donor E as there was insufficient material from this donor for all conditions when the analysis was performed. Samples were randomised and allocated into wells 2-9 in a blinded fashion.