

wgMLST (Core (Enterobase))

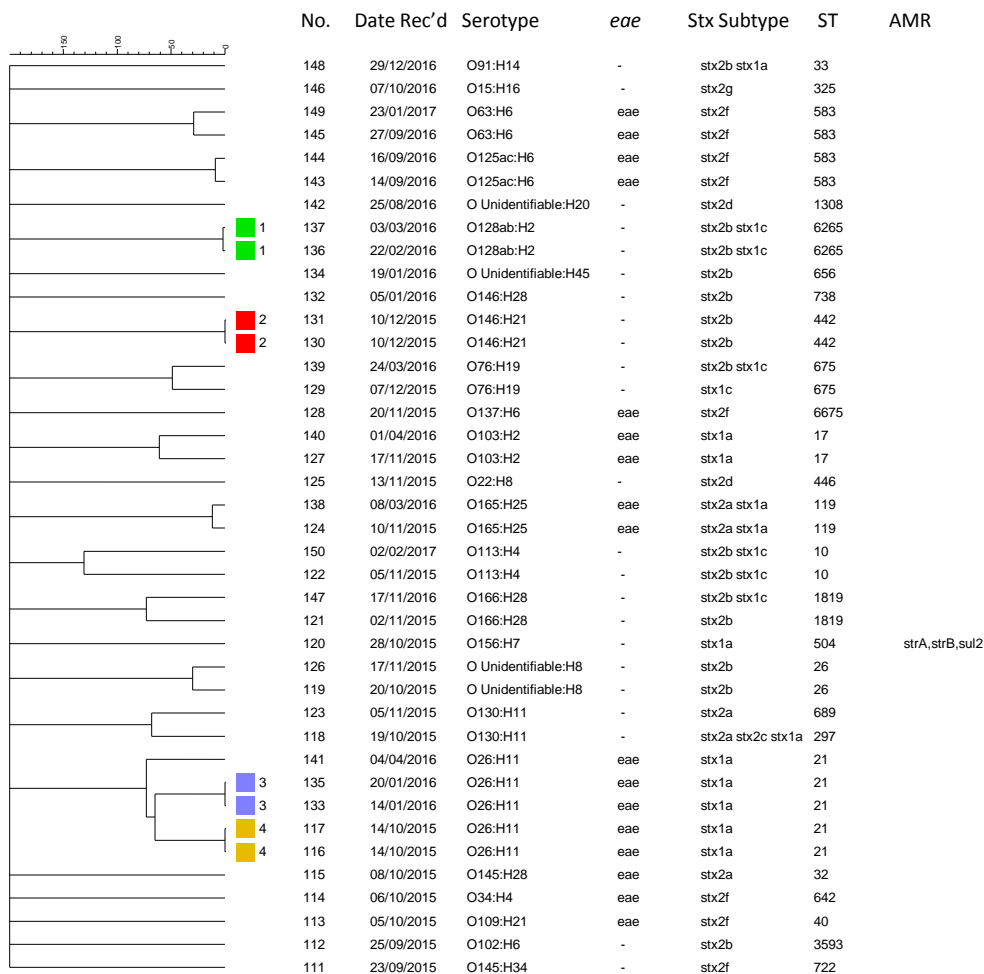


Figure S2. Dendrogram based on the allelic profiles of 2513 cgMLST target genes for the 40 non-O157 *E. coli*. Different colours represent known epidemiological linked cases. The columns represent the strain no., date received by SERL, serotype, presence of *eae*, *stx* subtype, sequence type (ST; Achtman) and antibiotic resistance gene profile (AMR).