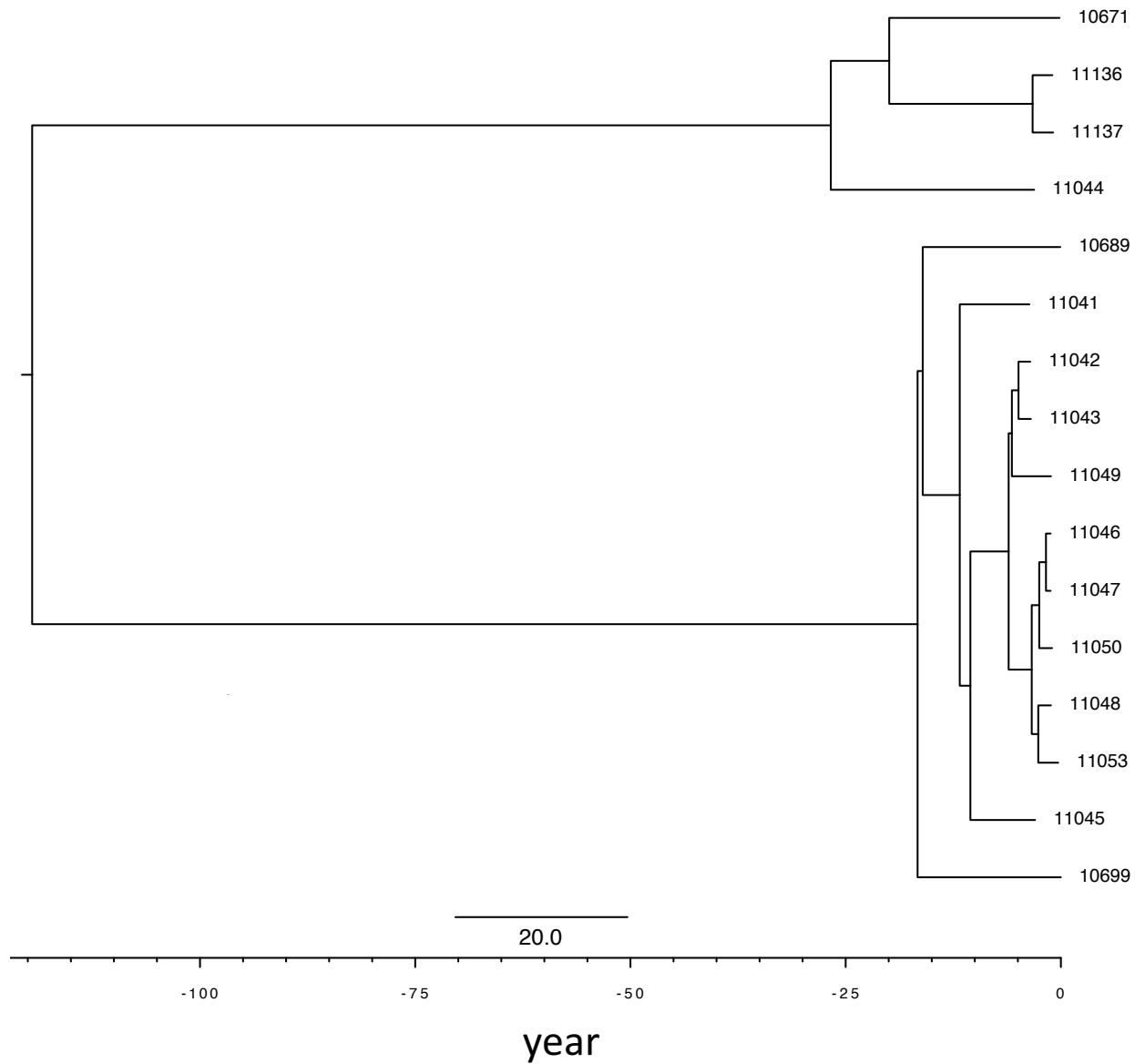


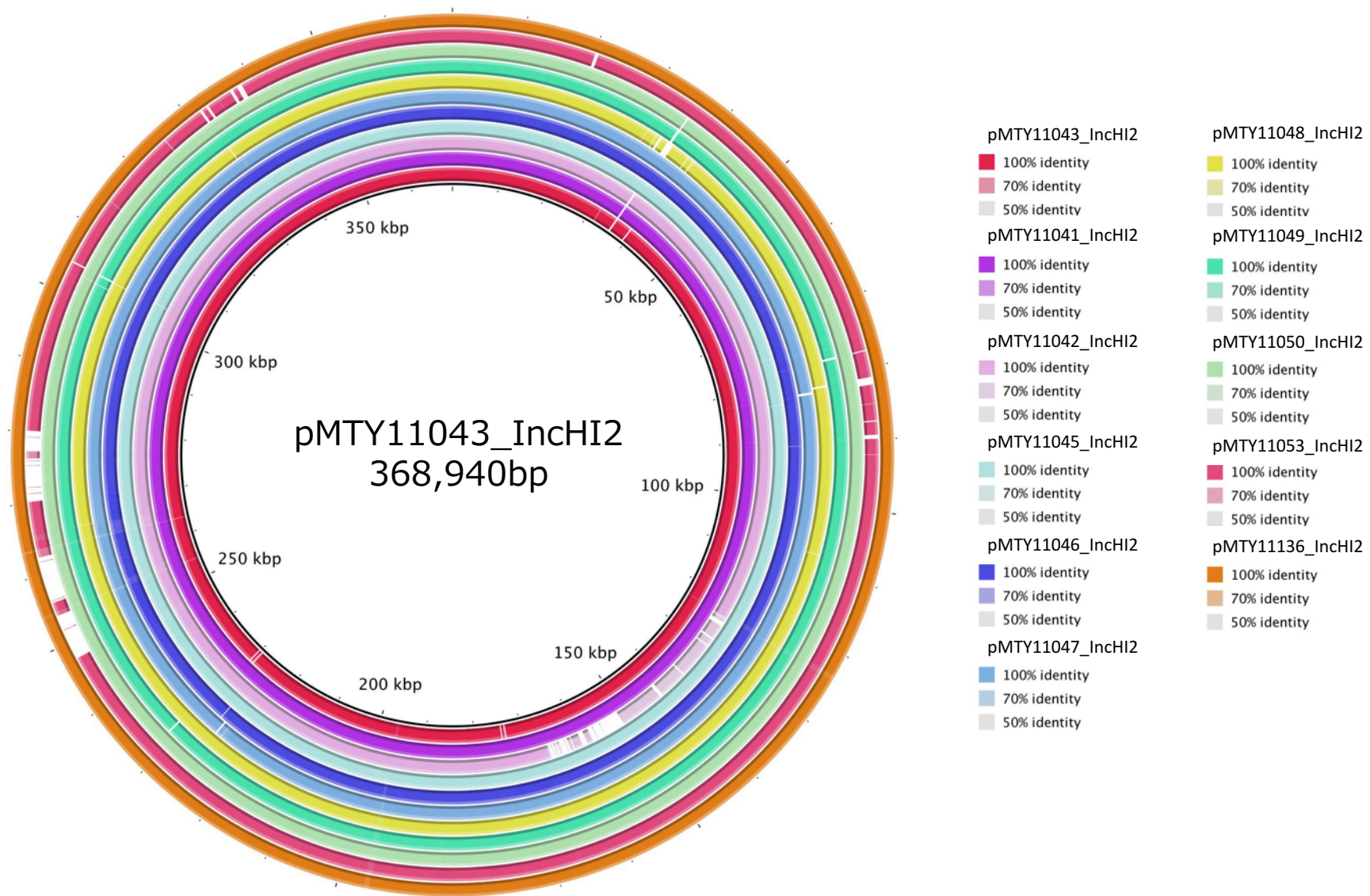
Aoki *et al.* Figure S1

A time-calibrated (year) phylogenetic tree was reconstructed using BEAST (version 2.4.7) based on 428bp non-recombination SNPs for the clade 1 and clade 2 isolates.



# Aoki et al. Figure S2.

Comparison of conjugative IncHI2 plasmids harboring *bla*<sub>IMP-1</sub> carried by *Enterobacter hormaechei* ST78 isolates of clade 1 and 2 (n=11). The circular map was generated with BLAST Ring Image Generator (BRIG) version 0.95 software using pMTY11043\_IncHI2 as the reference. All query sequences except pMTY11043\_IncHI2 were obtained from contigs generated from MiSeq data.



### Aoki et al. Figure S3.

Comparison of conjugative IncFIB plasmids carried by *Enterobacter hormaechei* ST78 isolates of clade 3 (n=13). The circular map was generated with BRIG version 0.95 software using pMTY10695\_IncFIB as the reference. All query sequences except pMTY10695\_IncFIB were obtained from contigs generated from MiSeq data.

