

## **Elevated FGF23 Levels in Mice Lacking the Thiazide-Sensitive NaCl cotransporter (NCC)**

Ganesh Pathare<sup>1, 2, 3\*</sup>, Manuel Anderegg<sup>1, 2, 3</sup>, Giuseppe Albano<sup>1, 2, 3</sup>, Florian Lang<sup>4, 5</sup>, Daniel G. Fuster<sup>1, 2, 3</sup>

<sup>1</sup>Division of Nephrology and Hypertension, Bern University Hospital, University of Bern, Switzerland.

<sup>2</sup>Institute of Biochemistry and Molecular Medicine, University of Bern, Switzerland,

<sup>3</sup>Swiss National Centre of Competence in Research (NCCR) Transcure, University of Bern, Switzerland.

<sup>4</sup>Department of Cardiology, Vascular Medicine and Physiology, Eberhard-Karls-University of Tübingen, Germany

<sup>5</sup>Department of Molecular Medicine II, Medical Faculty, Heinrich Heine University, Düsseldorf, Germany

\*Address correspondence to:

Ganesh Pathare

Institute of Biochemistry and Molecular Medicine,

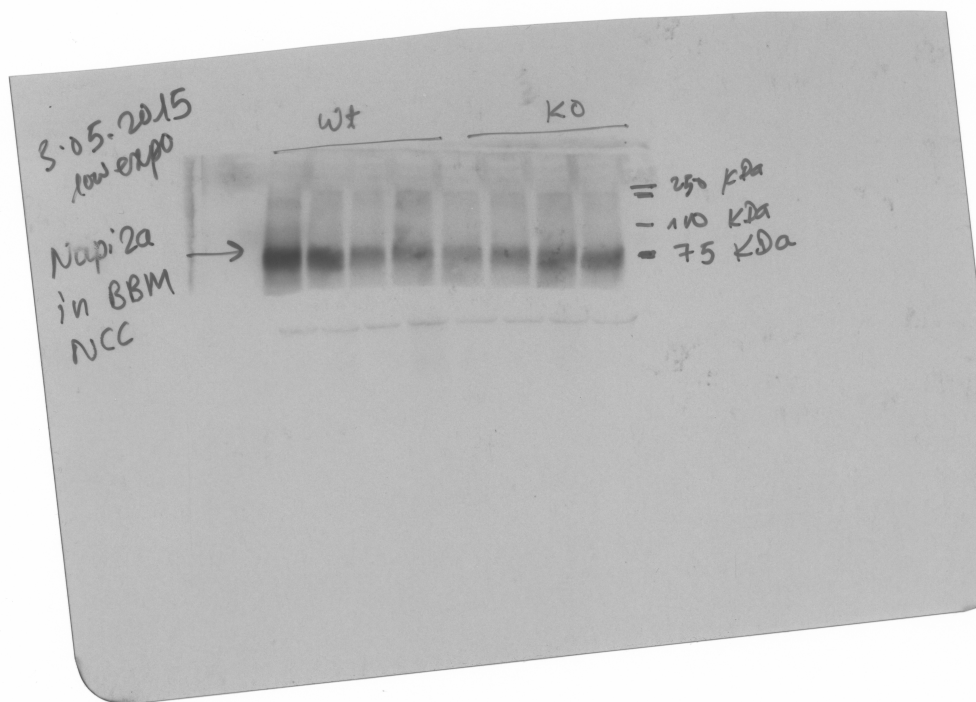
Bühlstrasse 28, 3012, Bern, Switzerland

Email: [ganesh.pathare@ibmm.unibe.ch](mailto:ganesh.pathare@ibmm.unibe.ch)

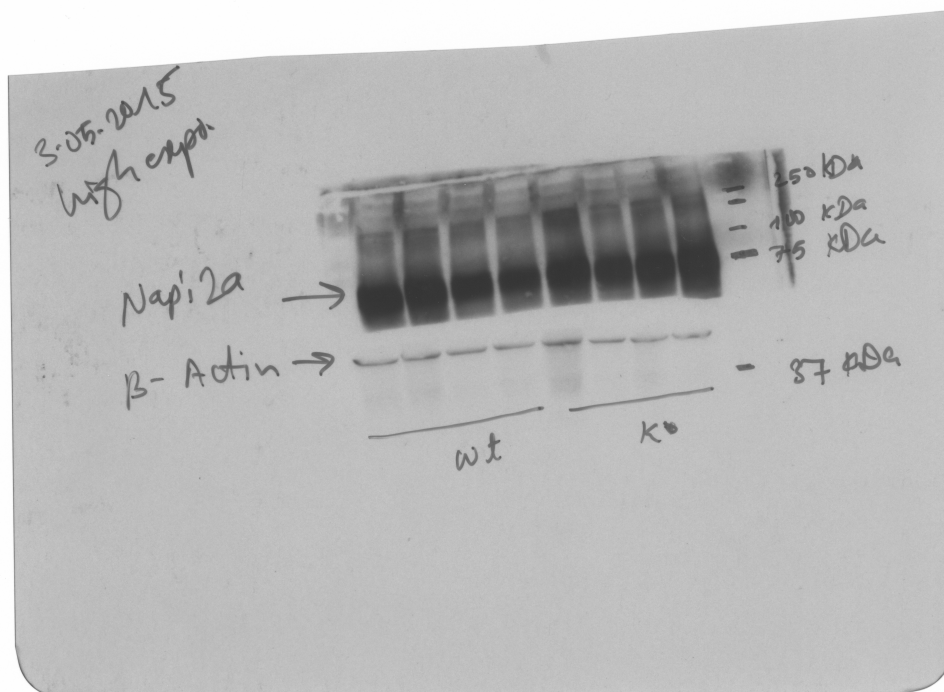
Phone: ++41 (0)31 632 31 44

Fax: ++41 (0)31 632 97 34

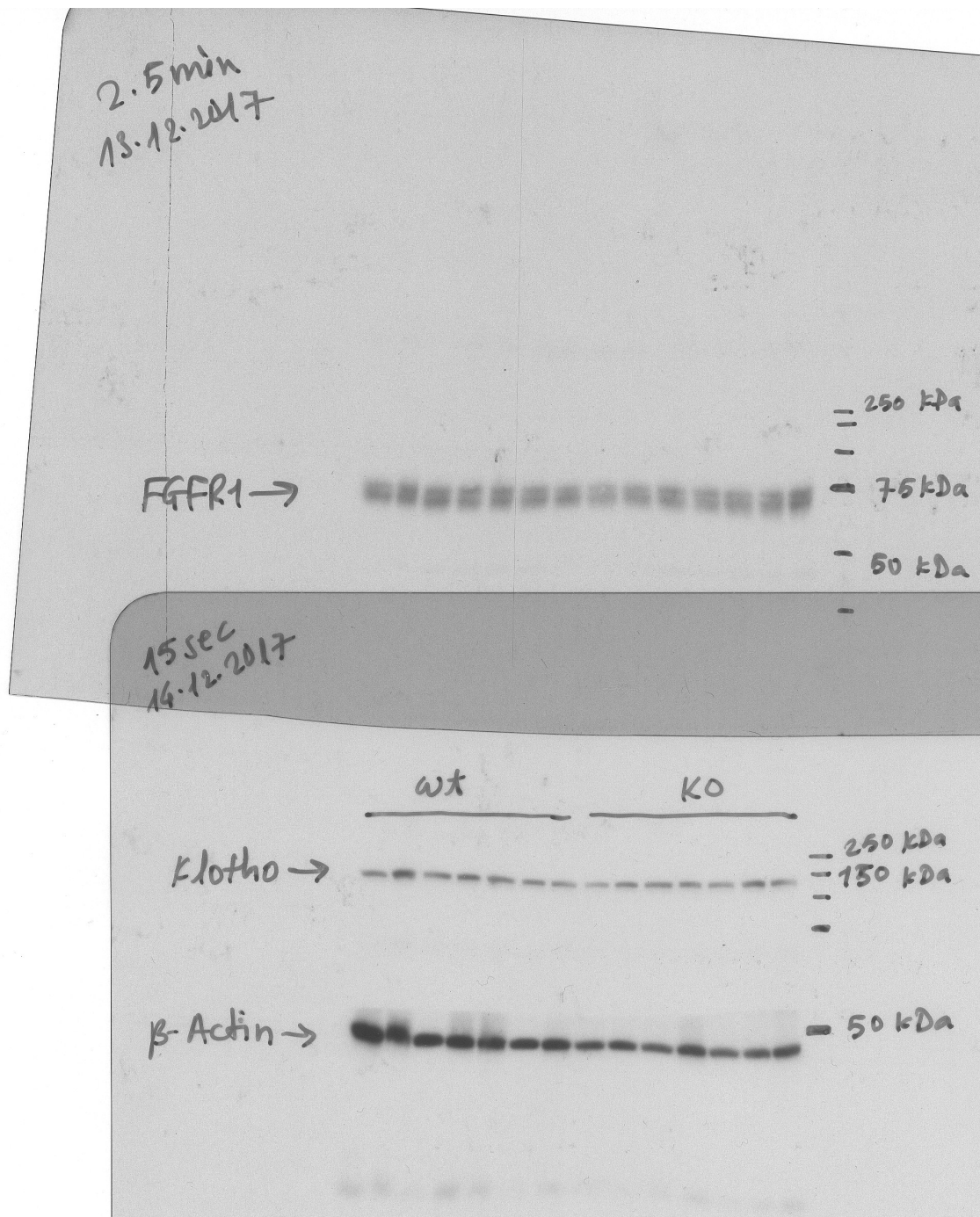
**Supplemental Figures:**



**Fig. S1:** Original uncropped western blot of Napi2a in BBM isolated from NCC WT and KO kidneys.



**Fig. S2:** Original uncropped western blot beta-actin in BBM isolated from NCC WT and KO kidneys.



**Fig. S3:** Original uncropped western blot of FGFR1, Klotho and beta-actin from NCC WT and KO total kidney lysates.