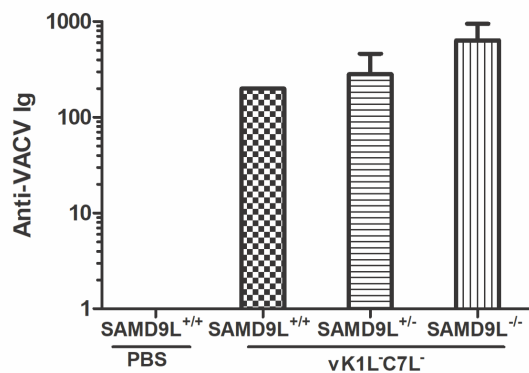


**A****B**

Virus	Mouse	Viral titer in Lung (PFU/5 mg tissue)	Viral titer in spleen (PFU/16 mg tissue)
WR	SAMD9L <sup>-/-</sup> #1	$1.9 \times 10^7$	$1.9 \times 10^3$
WR	SAMD9L <sup>-/-</sup> #2	$2.5 \times 10^7$	$2.8 \times 10^3$
vK1L <sup>-</sup> C7L <sup>-</sup>	SAMD9L <sup>+/+</sup> all	below detection (<10)	below detection (<10)
vK1L <sup>-</sup> C7L <sup>-</sup>	SAMD9L <sup>+/-</sup> all	below detection (<10)	below detection (<10)