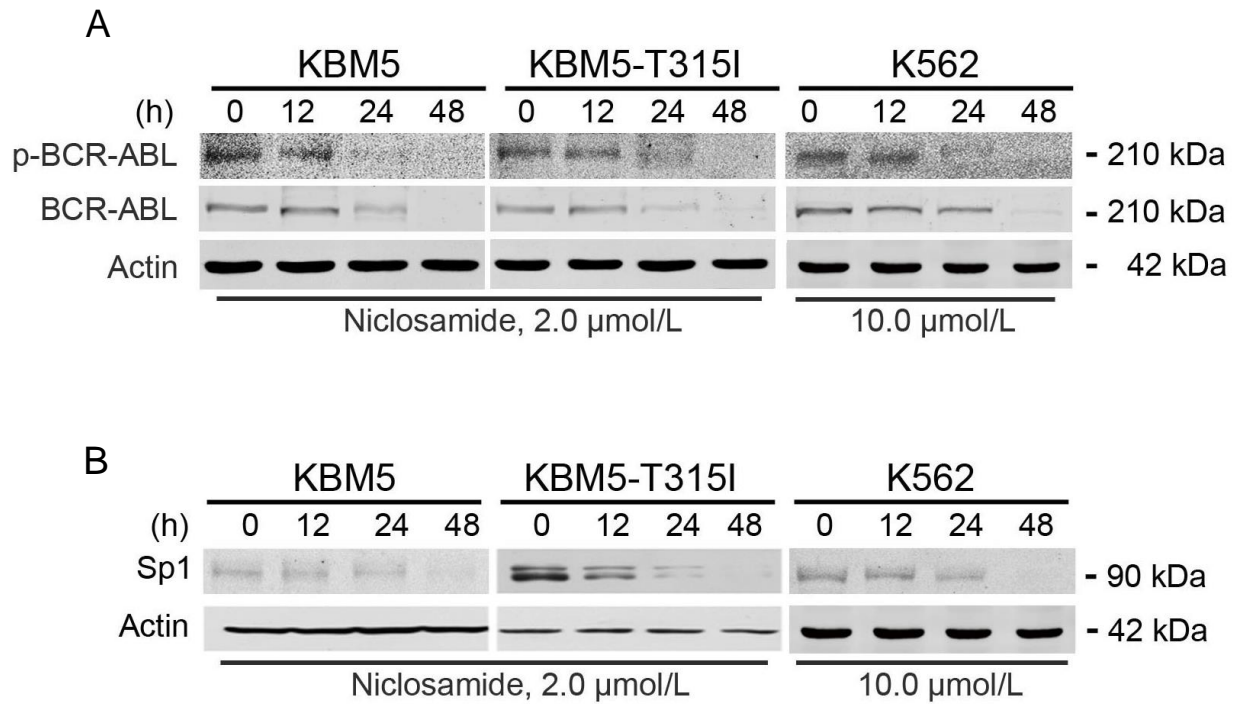


## Supplementary Figure S1



**Supplementary Figure S1. Niclosamide suppresses transcription of *BCR-ABL* gene by lowering transcriptional factor Sp1 in CML cells harboring either wild type- or T315I-*BCR-ABL*.**

A, KBM5 cells harboring wild type or T315I-*BCR-ABL* and K562 cell were exposed to niclosamide as indicated for different durations, and then analyzed by Western blotting. Actin served as a loading control for lanes above. B, Sp1 levels were downregulated in CML cells. KBM5, KBM5-T315I and K562 cells were treated with the indicating niclosamide for 48 h and subjected to Western blotting analysis.