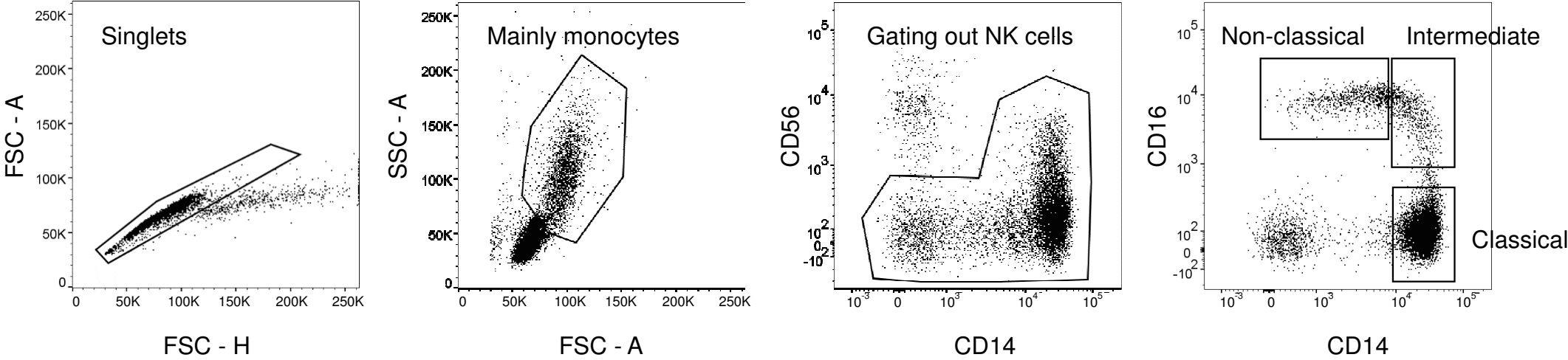
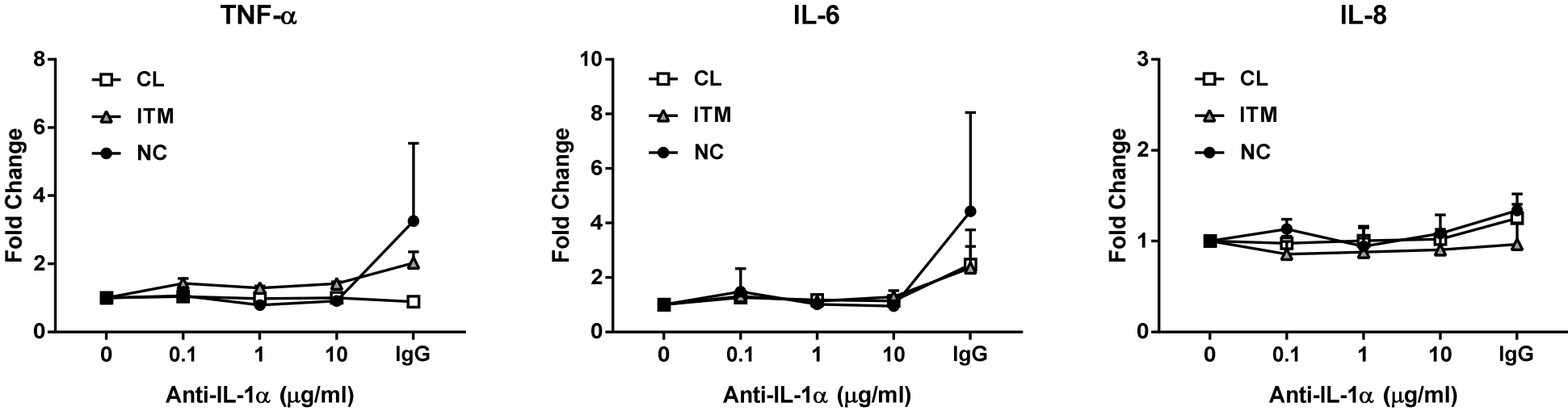


Supplementary Figure S1



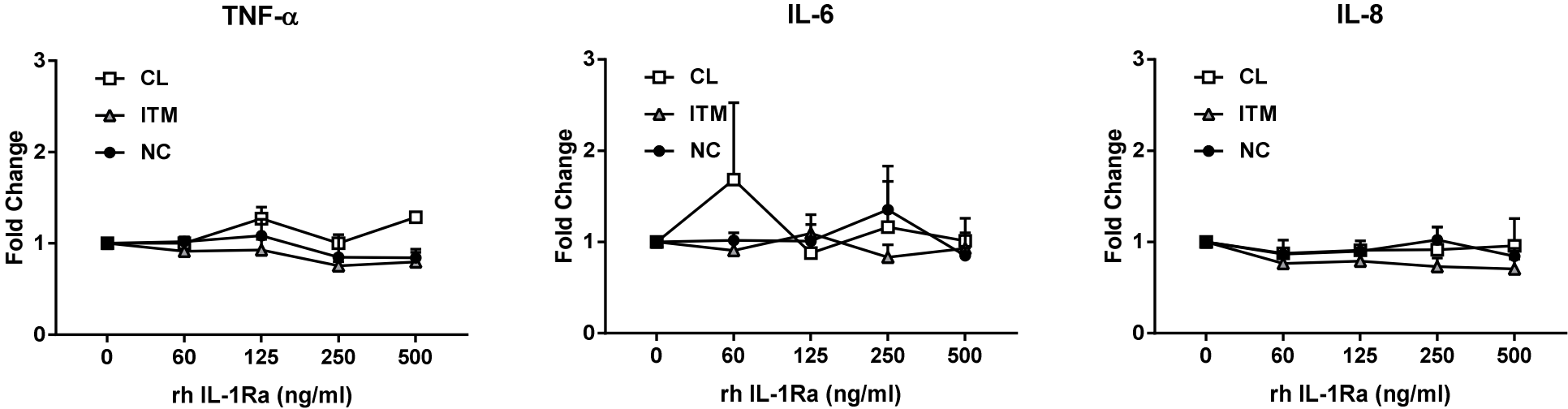
Flow cytometry gating strategy. Gating of total peripheral blood mononuclear cells (PBMCs) for analysis of the three monocyte subsets.

Supplementary Figure S2



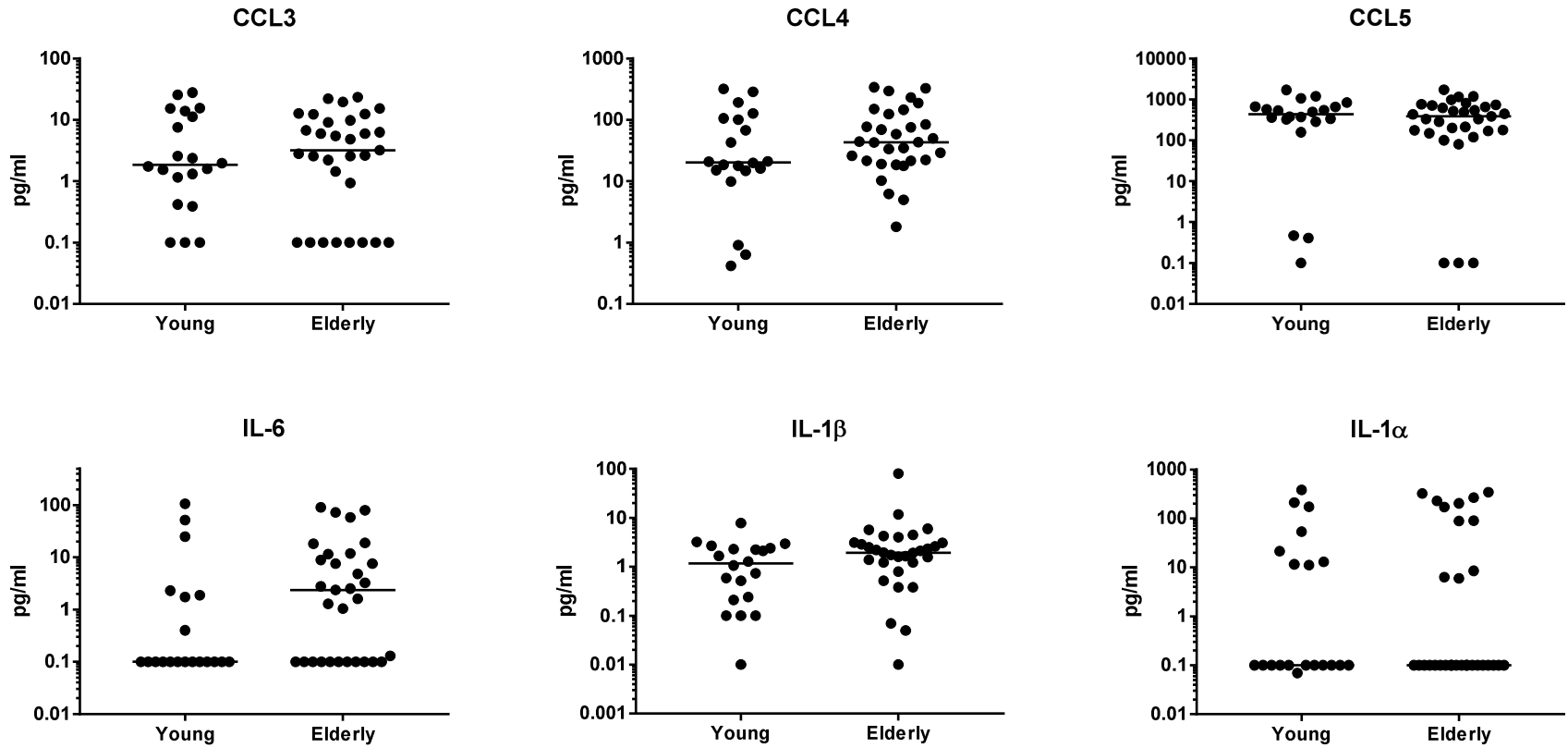
Treatment with anti-IL-1α does not inhibit SASP in non-classical monocytes. Fold change in secretion, with respect to no treatment, of TNF-α, IL-6 and IL-8 in the three monocyte subsets. Data represent the means ± SD; n = 3.

Supplementary Figure S3



Treatment with rh IL-1Ra does not inhibit the SASP in non-classical monocytes. Fold change in secretion, with respect to no treatment, of TNF- α , IL-6 and IL-8 in the three monocyte subsets. Data represent the means \pm SD; n = 3.

Supplementary Figure S4



Plasma levels of cytokines are higher in the elderly. CCL3, CCL4, CCL5, IL-6 IL-1β and IL-1α levels in the plasma was analyzed by Luminex assay. Each dot represents one donor; line represents median; n = 20 for young, n = 30 for elderly.