

YMTHE, Volume 26

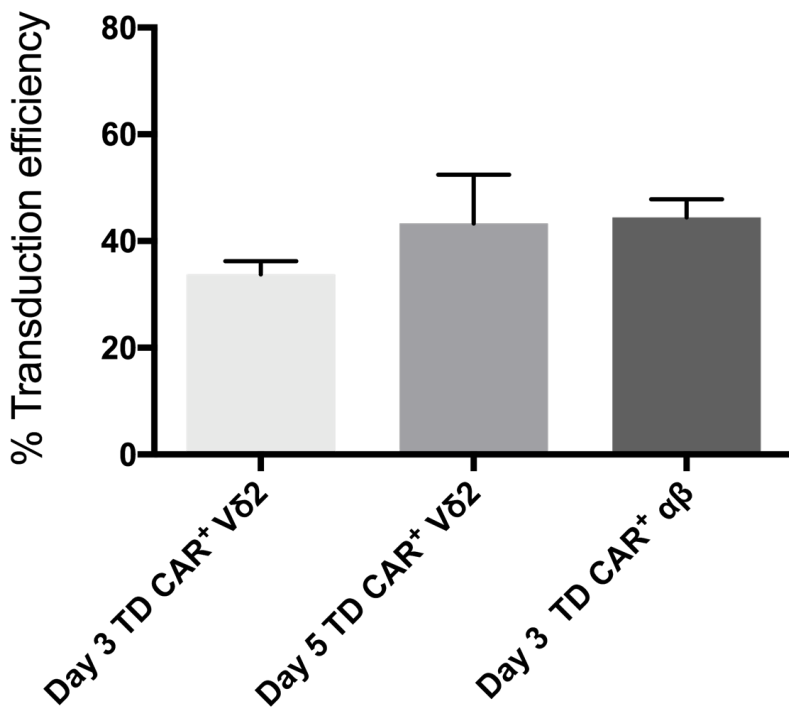
## **Supplemental Information**

**Chimeric Antigen Receptor-Engineered Human**

**Gamma Delta T Cells: Enhanced Cytotoxicity**

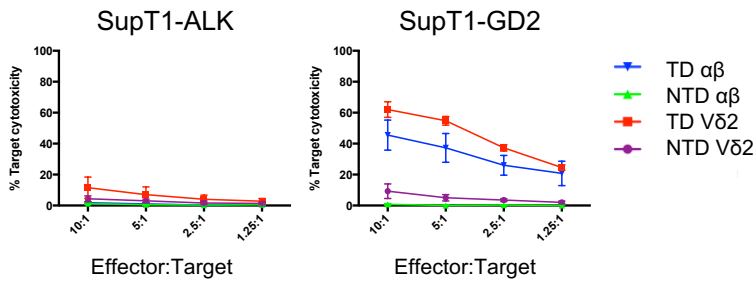
**with Retention of Cross Presentation**

**Anna Capsomidis, Gabriel Benthall, Heleen H. Van Acker, Jonathan Fisher, Anne M. Kramer, Zarah Abeln, Yvonne Majani, Talia Gileadi, Rebecca Wallace, Kenth Gustafsson, Barry Flutter, and John Anderson**

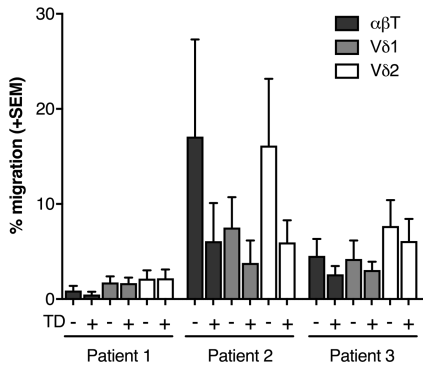


**Supplementary Figure 1.**

Transduction efficiency of Vδ2<sup>+</sup> T cells as measured by % QBend10<sup>+</sup> comparing timing of viral transduction (day 3 or day 5). As a positive control PBMC stimulated by CD3 and CD28 antibodies were transduced on day 3 following stimulation.



**Supplementary Figure 2.**  $\alpha\beta$  and  $V\delta 2^+$  GD2-CAR T cells specifically lyse SupT1 cells genetically modified to express tumor antigen GD2, but not SupT1 cells genetically modified to express anaplastic lymphoma kinase (ALK) antigen in 4-hour  $^{51}\text{Cr}$  release assay. GD2-CAR transduced (TD)  $\alpha\beta$  and  $V\delta 2^+$  T cells were sorted to >95% purity by fluorescence activated cell sorting (FACS). Non-transduced (NTD) cells were sorted by magnetic-activated cell sorting (MACS). Mean of 4 donors in triplicate. Error bars represent SEM.



**Supplementary Figure 3.** Percentage T cell migration towards supernatant taken from three neuroblastoma neurosphere lines derived from primary patient tissue. Migration calculated as ((number of migrated cells in the specific condition - number of migrated cells in the negative control for that condition) / number of migrated cells in the positive control) x 100.