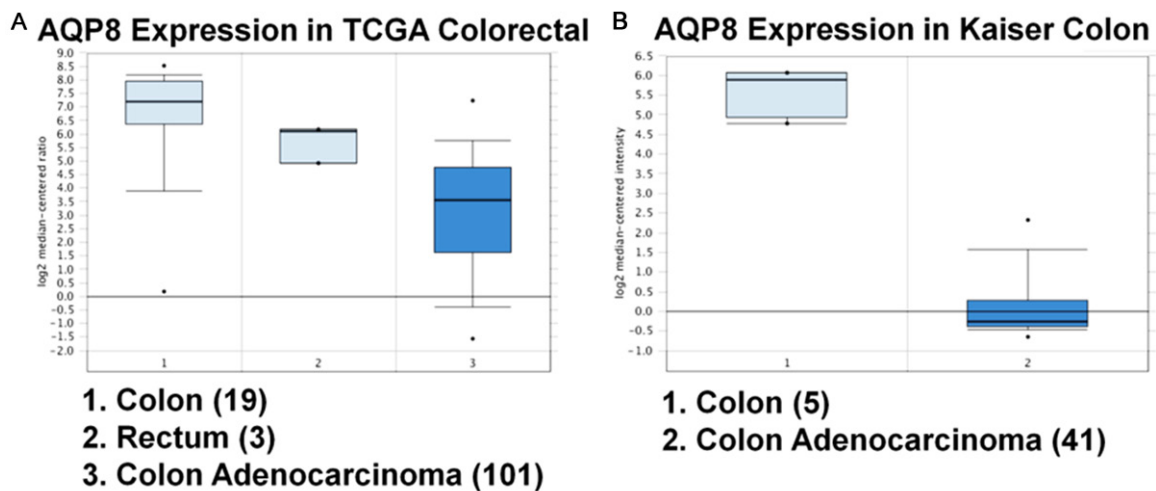


AQP8 inhibits CRC growth and metastasis

Supplementary Table 1. qPCR primer sequences of target genes and GAPDH

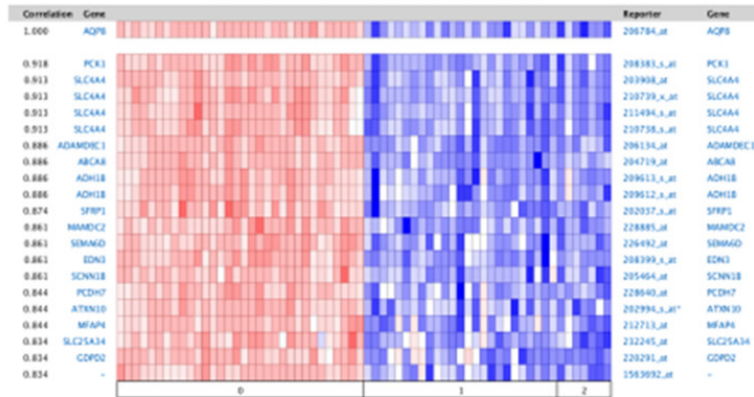
Gene		Primer sequence
AQP8	Sense	5'-GCGAGTGCCTGGTACGAAC-3'
AQP8	Antisense	5'-CAGGCACCCGATGAAGATGAA-3'
PCDH7	Sense	5'-GGATCGGGTGAGGTGACTTTC-3'
PCDH7	Antisense	5'-GTTCTCGTCGAAGATCATCTGAC-3'
E-cadherin	Sense	5'-AAAGGCCCATTTCCCTAAAAACCT-3'
E-cadherin	Antisense	5'-TGCCTTCTCTATCCAGAGGCT-3'
N-cadherin	Sense	5'-AGCTCCATTCGACTTAGACA-3'
N-cadherin	Antisense	5'-CAGCCTGAGCACGAAGAGTG-3'
RFX6	Sense	5'-AAGCAGCGGATCAATACCTGT-3'
RFX6	Antisense	5'-ACCGTGGTAAGCAAACCTCTT-3'
SLC4A4	Sense	5'-TGATCGGGAGGCTTCTTCTCT-3'
SLC4A4	Antisense	5'-GGACCGAAGTTGGATTCTTG-3'
SEMA6D	Sense	5'-GCTTTGTGCCTACATACTGCT-3'
SEMA6D	Antisense	5'-ACCGGATATTGCCTTGAATAGTG-3'
ATXN10	Sense	5'-GGAACCTGGATACGATTGGTGT-3'
ATXN10	Antisense	5'-GCACCCAAACAATAGACTGGGAA-3'
CLDN8	Sense	5'-CACCCATGCCTTAGAAATCGC-3'
CLDN8	Antisense	5'-TCACGCAATTCATCCACAGTC-3'
TRPM6	Sense	5'-AGCACAATCATACCAGCTCA-3'
TRPM6	Antisense	5'-CATGGTCTCCAATCAGTCGGC-3'
MARK1	Sense	5'-GAGCGGGACACGAAAATCAT-3'
MARK1	Antisense	5'-TGCTACTCGACTTGGTAGGCT-3'
RNF152	Sense	5'-CTGTCATCGCCATTCCACACA-3'
RNF152	Antisense	5'-GCAGCATGTAGCACCCATTG-3'
SCN9A	Sense	5'-CCTCAGAGCTTTGTCCATTCA-3'
SCN9A	Antisense	5'-TTGTCTGCATAGTAGGGGTCC-3'
GAPDH	Sense	5'-ACAACCTTGGTATCGTGAAGG-3'
GAPDH	Antisense	5'-GCCATCACGCCACAGTTTC-3'



Supplementary Figure 1. Box plots derived from gene expression data in Oncomine comparing expression of AQP8 in normal and CRC tissue.

AQP8 inhibits CRC growth and metastasis

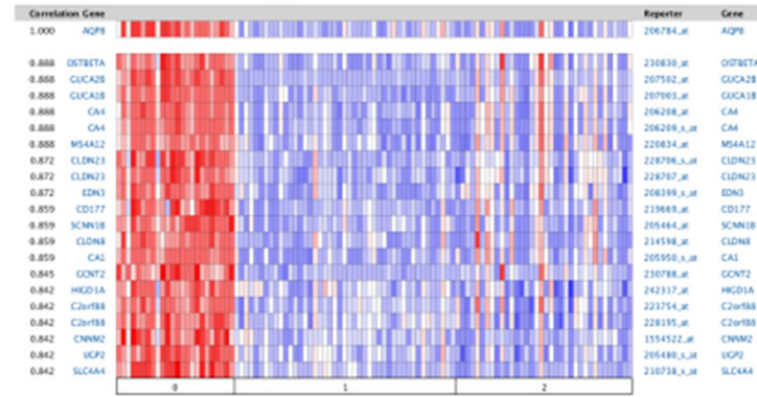
Genes Co-expressed with AQP8 in Sabates-Bellver Colon



- 0. No value (32)
- 1. Colon Adenoma (25)
- 2. Rectal Adenoma (7)



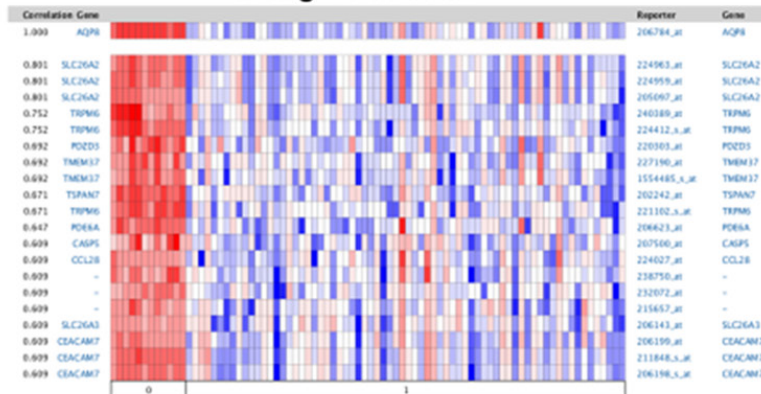
Genes Coexpressed with AQP8 in Skrzypczak Colorectal



- 0. No value (24)
- 1. Colorectal Adenocarcinoma (45)
- 2. Colorectal Carcinoma (36)



Genes Co-expressed with AQP8 in Hong Colorectal



- 0. No value (12)
- 1. Colorectal Carcinoma (70)



Supplementary Figure 2. Co-expression data from Oncomine (www.oncomine.org). We used the following filters: gene 'AQP8' Analysis Type: 'Co-expression analysis' Cancer Type: 'CRC'. The color changed according to a weaker (blue) or higher (red) expression.