

-Ade affter Cu

N-PrP90-230

Vector

N

N-A β 1-42

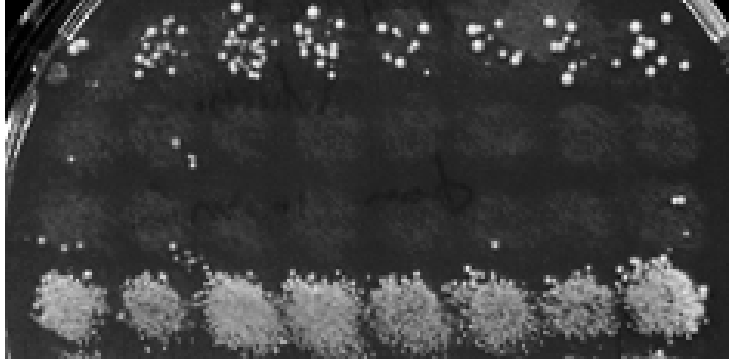


Figure S2. [*PSI⁺*] induction in the [*pin⁻*] yeast strain by the Sup35N-PrP and Sup35N-A β chimeric constructs. Expression of chimeric constructs was induced by 100 μ M CuSO₄, followed by velveteen replica plating onto –Ade medium without additional copper, as described in Experimental Procedures. [*PSI⁺*] was detected by growth on –Ade. A portion of this plate is shown in Fig 2B.