

Resistance of bladder cancer to doxorubicin through upregulation of ABCG2 transcription by FOXM1

Yun-Gil Roh¹, Mi-Hye Mun¹, Mi-So Jeong¹, Won-Tae Kim¹, Se-Ra Lee², Jin-Woong Chung¹,
Seung Il Kim^{3,4}, Tae Nam Kim⁵, Jong Kil Nam⁶ and Sun-Hee Leem^{1*}

Supplementary Table S1 Primers for plasmid construction.

Supplementary Table S2 qPCR primer set.

Fig. S1. FOXM1 regulates the transcription level of the ABC transporter gene family.

(a) scRNA or siRNA-transfected KU7 cell ABC transporter gene mRNA was measured using qRT-PCR. (b) mRNA expression of FOXM1 and ABCG2 was checked using qRT-PCR in bladder cancer cells. (c) Protein expression was examined by Western blotting in bladder cancer cells. (d) Cell viability was measured by MTT assay.

Supplemental Table S1**Table S1. Primers for plasmid construction**

Primer name	Primer sequence	Primer length	Product size
pFOXM1-V5 tag F	5' ATGC GGATCC (BamHI) GCC ATG AAA ACT AGC CCC CGT CG 3'	33 mer	2249 bp
pFOXM1-V5 tag R	5' ATGC CTCGAG (XhoI) CGC TGT AGC TCA GGA ATA AAC TG 3'	33 mer	
ABCG2 promoter F	5' AGTC GGTACC (KpnI) TCT TAT CCC ATA TGT TTG TTA TG 3'	33 mer	2202 bp
ABCG2 promoter R	5' AGTC AAGCTT (HindIII) CTT CGA CAT TAC TGG AAG AC 3'	30 mer	

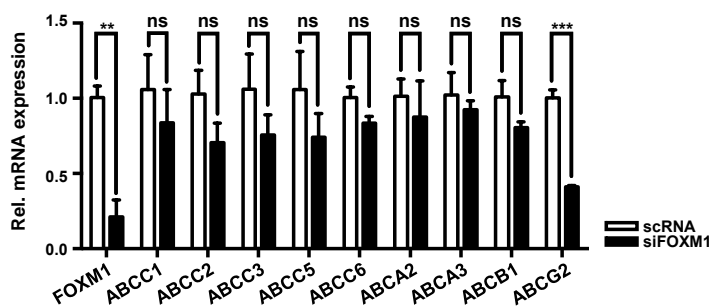
Supplemental Table S2

Table S2. qPCR primer set

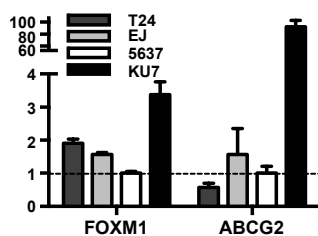
Primer name	Primer sequence	Primer length	Product size
qPCR ACTIN F	5' CCC TGG AGA AGA GCT ACG AG 3'	20 mer	132 bp
qPCR ACTIN R	5' AGG TAG TTT CGT GGA TGC CA 3'	20 mer	
qPCR L19 F	5' GCG GAA GGG TAC AGC CAA T 3'	19 mer	76 bp
qPCR L19 R	5' GCA GCC GGC GCA AA 3'	14 mer	
qPCR FOXM1 F	5' TGC AGC TAG GGA TGT GAA TCT TC 3'	23 mer	157 bp
qPCR FOXM1 R	5' GGA GCC CAG TCC ATC AGA ACT 3'	21 mer	
qPCR ABCG2 F	5' GCG ACC TGC CAA TTT CAA ATG 3'	21 mer	157 bp
qPCR ABCG2 R	5' GAC CCT GTT AAT CCG TTC GTT T 3'	22 mer	
qChIP ABCG2 I F	5' TTT TCC CCC TTT CAT GGT AA 3'	20 mer	195 bp
qChIP ABCG2 I R	5' CAG ACT CTC ACC AAG GAA CAA A 3'	22 mer	
qChIP ABCG2 II F	5' CAA CTC AAT CAT AGG CAG AGA GAA 3'	24 mer	117 bp
qChIP ABCG2 II R	5' GAT GAG CTT AAC AAC TTG TGA AAC A 3'	25 mer	
qChIP ABCG2 III F	5' ATC CAT CCT TTT CCT GCT TTA TCA G 3'	25 mer	128 bp
qChIP ABCG2 III R	5' GCA CAA CTT GGA ATG CAT AAA C 3'	22 mer	
qChIP ABCG2 NTS F	5' AAA ATT TTG TCT CCC TAG TGC TGA C 3'	25 mer	101 bp
qChIP ABCG2 NTS R	5' CAG GAA GAA GCT GCT AGA AGA AAT G 3'	25 mer	

Fig. S1

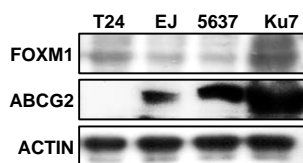
A



B



C



D

