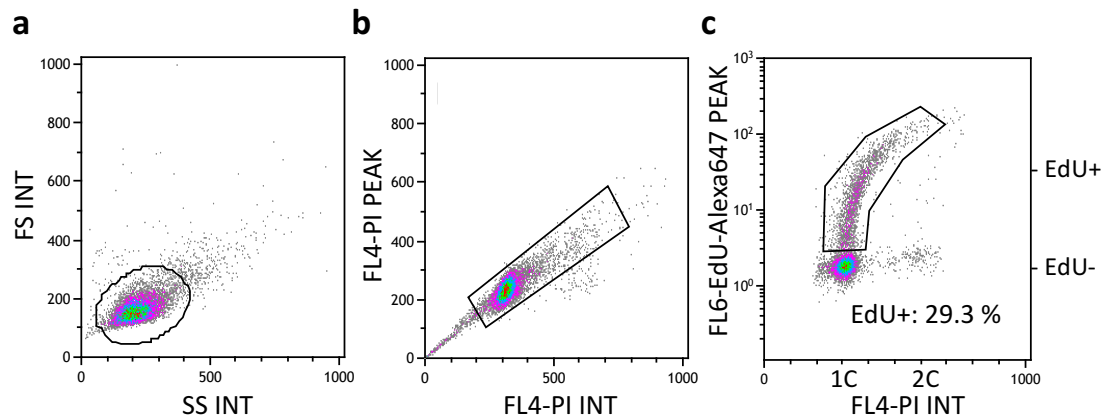


Supplementary Figure 1.



Gating strategy used in flow cytometry analyses.

Representative experiment from U2OS cells expressing normal levels of cyclin E that were released into EdU-containing media for 14 h after mitotic shake-off. **(a)** Cells were first gated on a forward scatter (FS)/side scatter (SS) plot. **(b)** Cells were then further gated on a FL4-INT/FL4-PEAK (PI) plot to eliminate doublets. **(c)** Finally, the percentage of EdU positive cells was quantified, as shown, from a gate on a FL6-EdU-Alexa647 PEAK/ FL4-PI-INT plot.