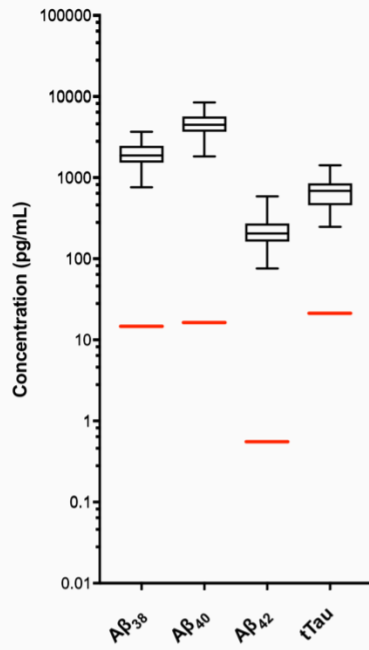
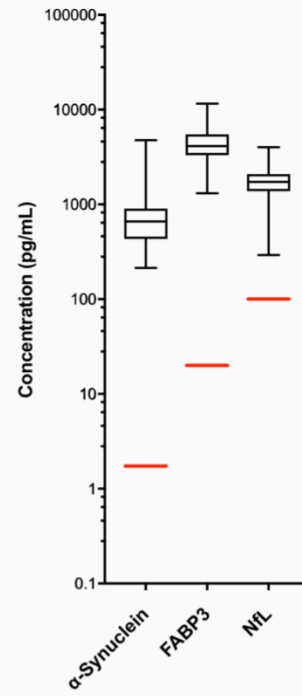
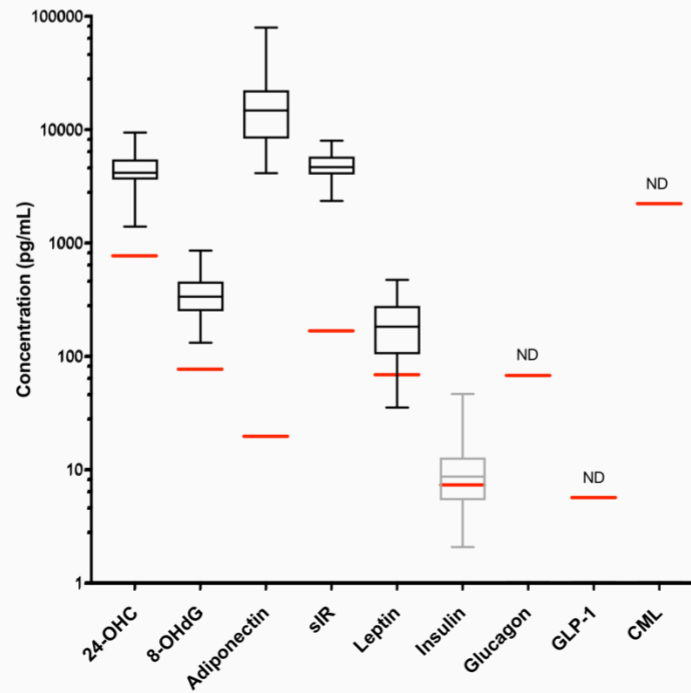
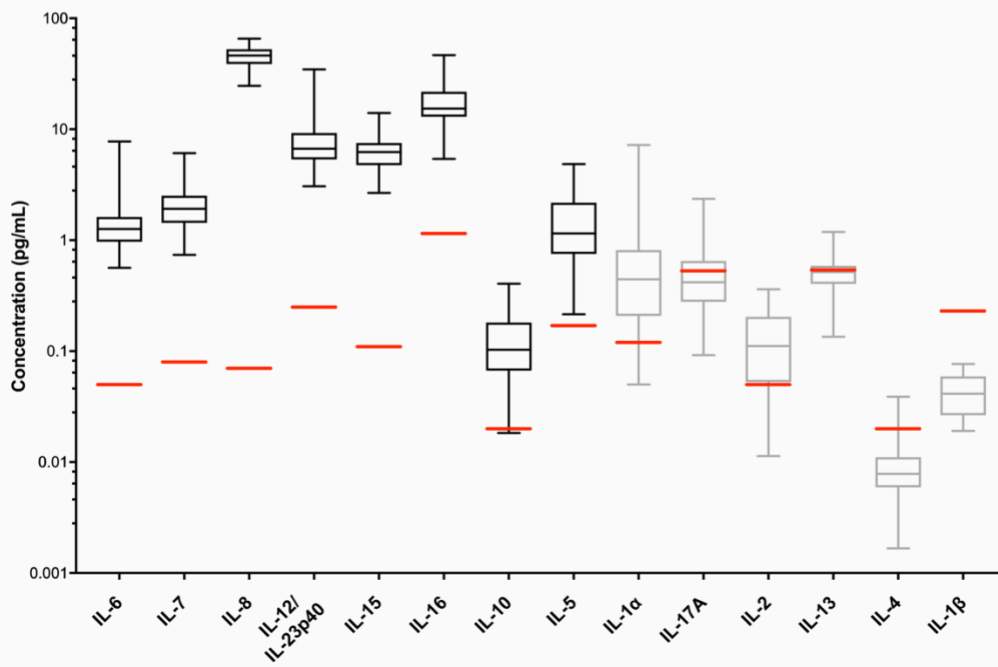
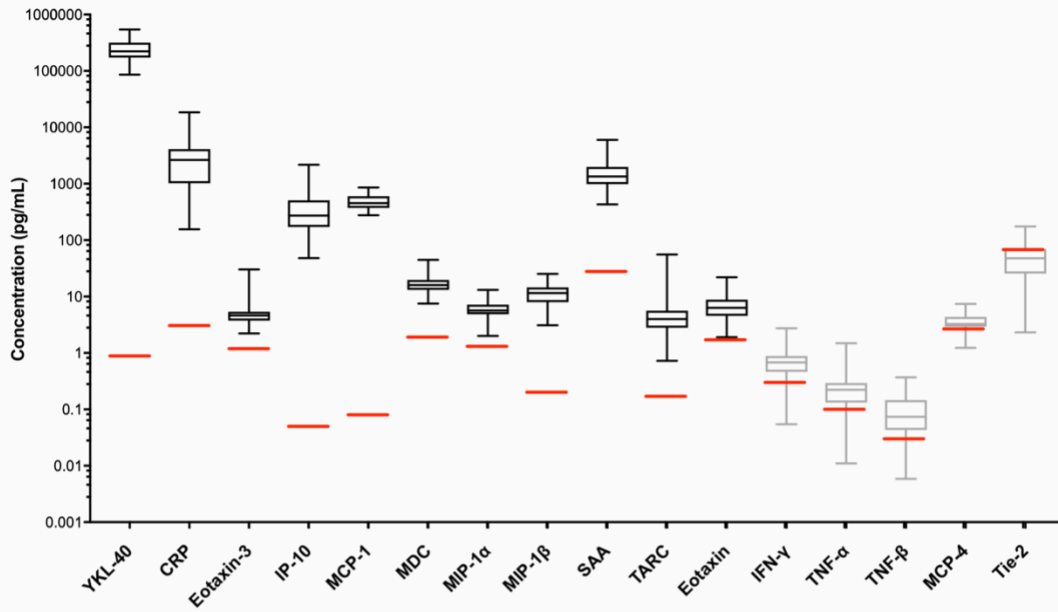


**S1 Figure. Assay sensitivity performance for CSF collected from subjects with MCI or mild dementia due to AD.**

---

Range of analyte concentrations in CSF and assay lower limit of detection (LLOD) for **(a)** core AD biomarkers, **(b)** A $\beta$  and tau-independent markers of neurodegeneration, **(c)** metabolic and oxidative stress markers, **(d)** markers of inflammation and immune modulation, and **(e)** vascular injury markers. Red bars indicate mean LLOD value across three experimental blocks. Boxplots illustrate the median, inter-quartile range (25-75 percentile), and range (whiskers) of all measured samples. Boxplots in grey denote analytes that were not measurable in > 80% of samples, failing to meet cut-off criteria. Plotted using a log scale and converted all units to pg/mL. Abbreviations: ND, not detectable (indicates analytes where all sample measurements fell below the zero calibrator and concentration values could not be calculated).

**A****Core AD Biomarkers****B****Aβ and tau-independent Neurodegeneration Biomarkers****C****Metabolic and Oxidative Stress Biomarkers**

**D****Inflammatory Biomarkers**

E

