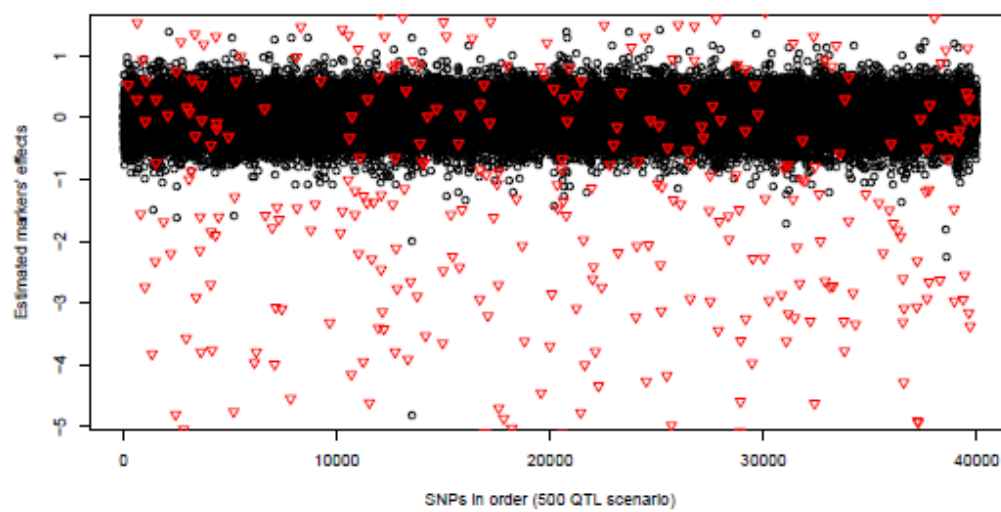
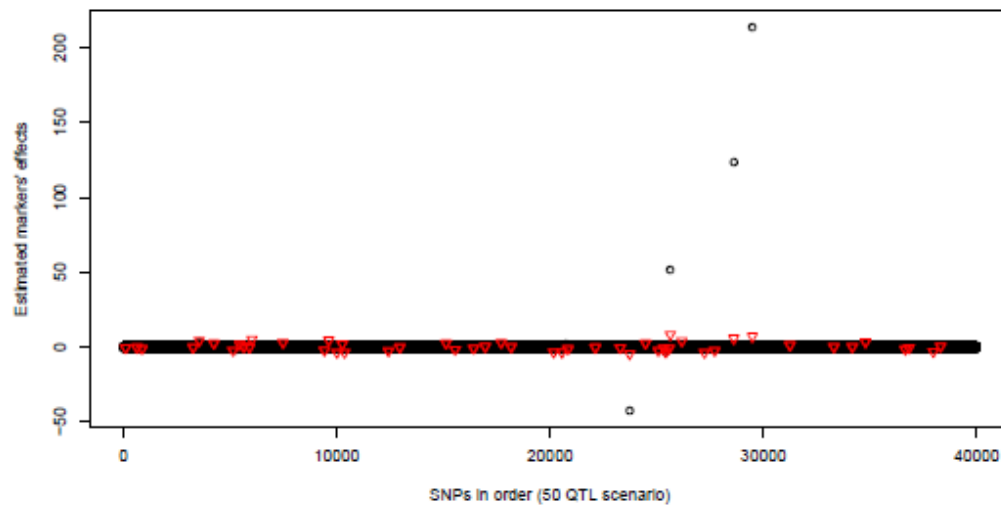
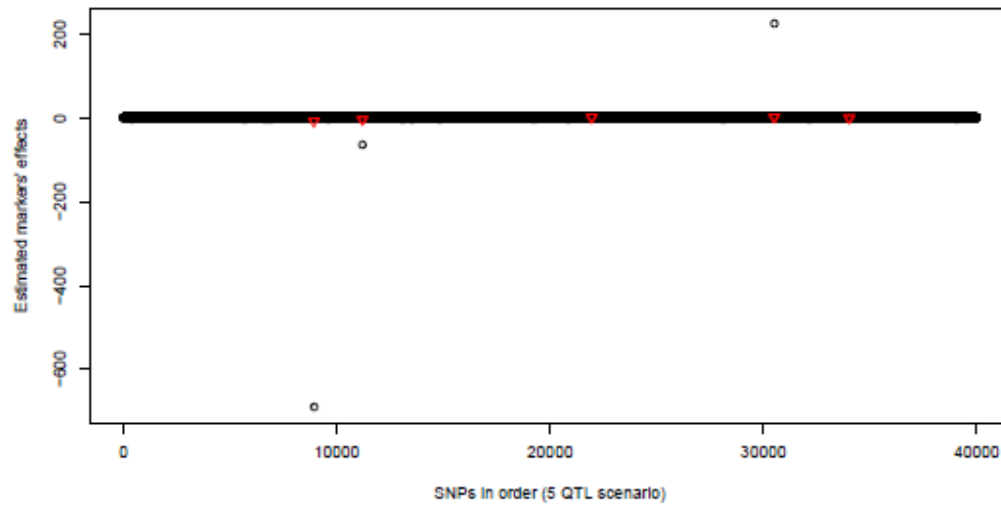
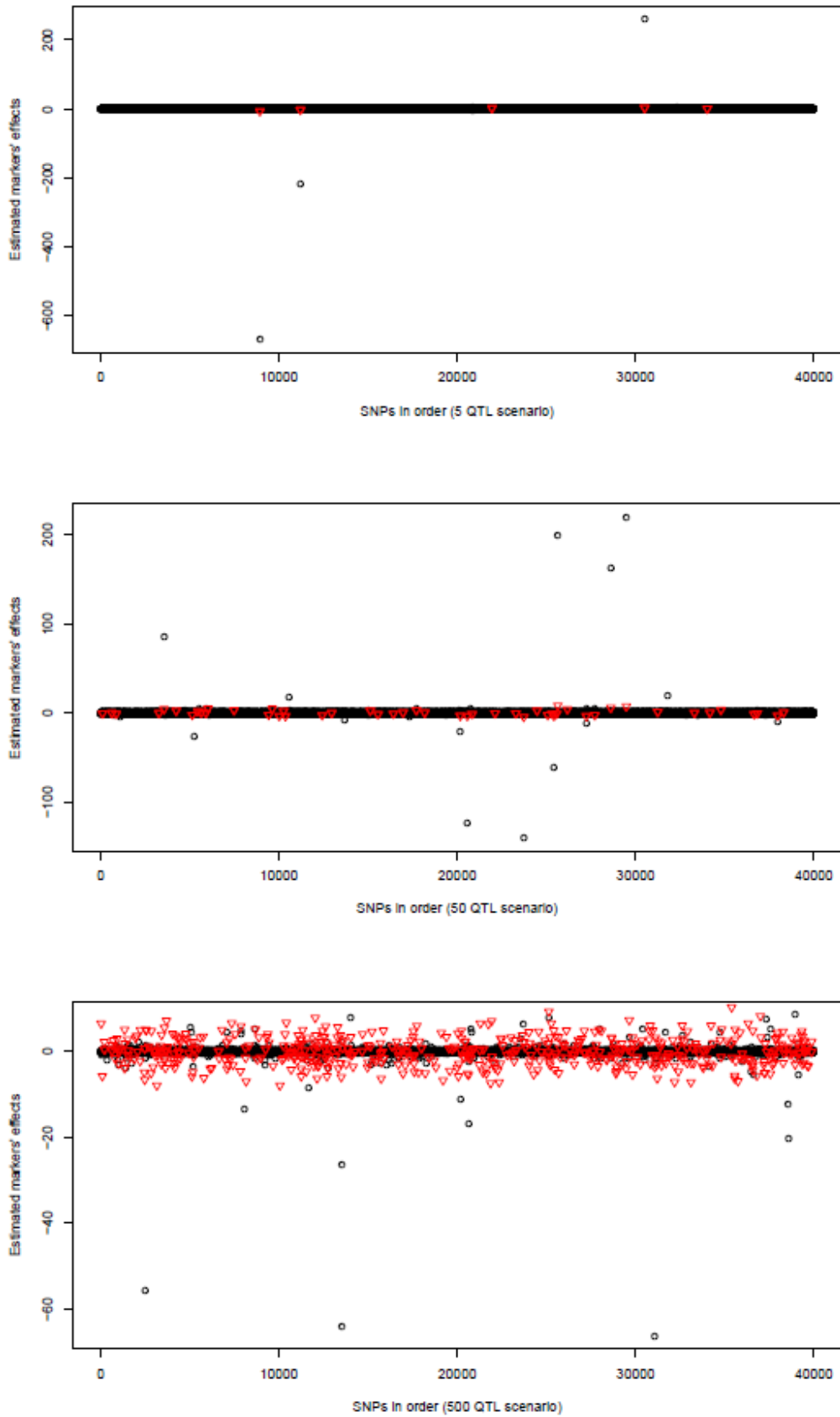


1  
 2 **Figure A1.** Plots of estimated markers' effects of SS-BLUP for one replicate of 5 (top), 50 (middle)  
 3 and 500 (bottom) QTL scenarios. The red triangles (x-axis is QTL position, y-axis is QTL effects)  
 4 are the true QTL in the simulation.

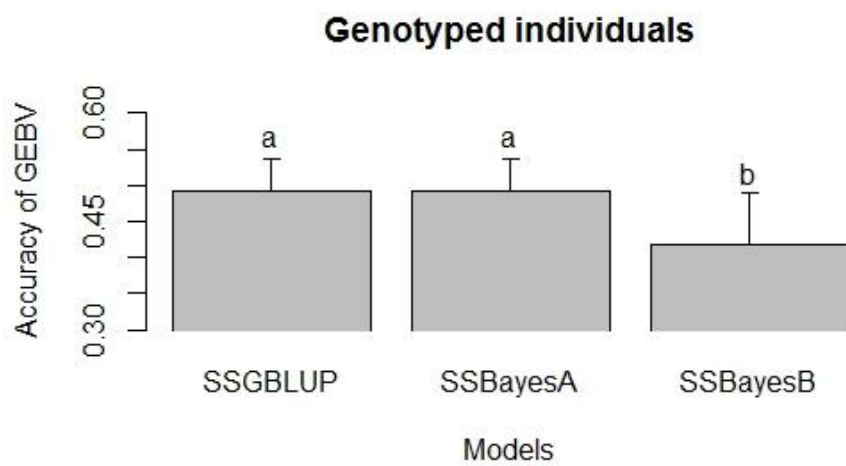
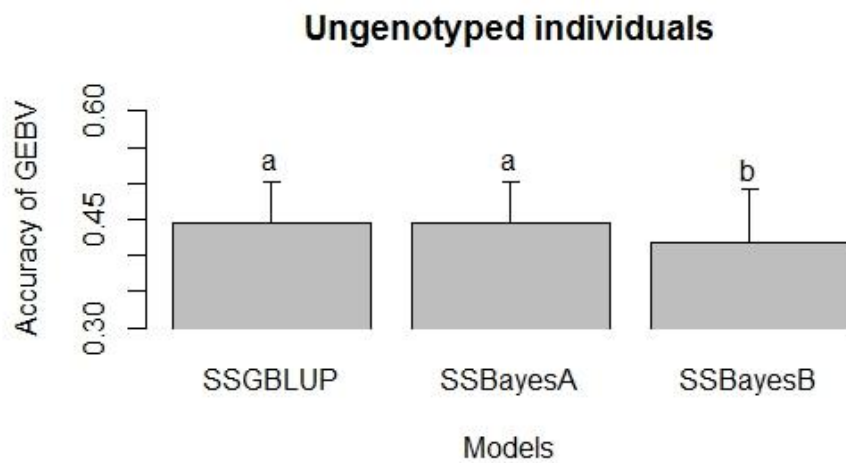


5  
 6 **Figure A2.** Plots of estimated markers' effects of SS-BayesA for one replicate of 5 (top), 50  
 7 (middle) and 500 (bottom) QTL scenarios. The red triangles (x-axis is QTL position, y-axis is  
 8 QTL effects) are the true QTL in the simulation.



9

10 **Figure A3.** Plots of estimated markers' effects of SS-BayesB for one replicate of 5 (top), 50  
 11 (middle) and 500 (bottom) QTL scenarios. The red triangles (x-axis is QTL position, y-axis is  
 12 QTL effects) are the true QTL in the simulation.



13

14 **Figure A4.** Accuracy of GEBV with different single-step models at the scenario of 5000 QTL for  
 15 the validation population using generation 5003. Different letters indicated different at P-value of  
 16 0.05.

17