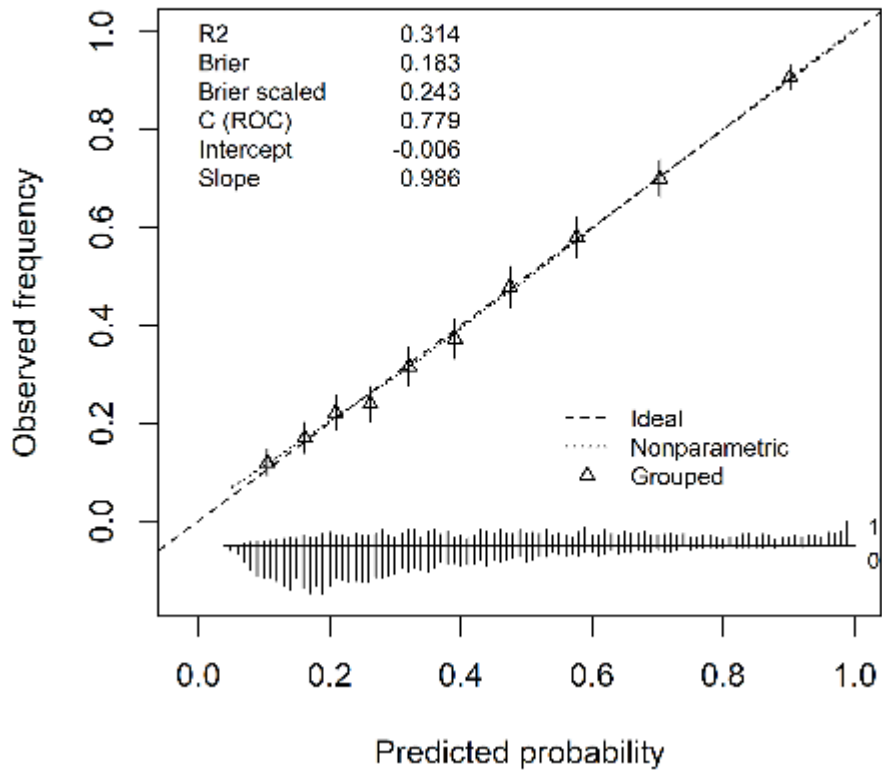
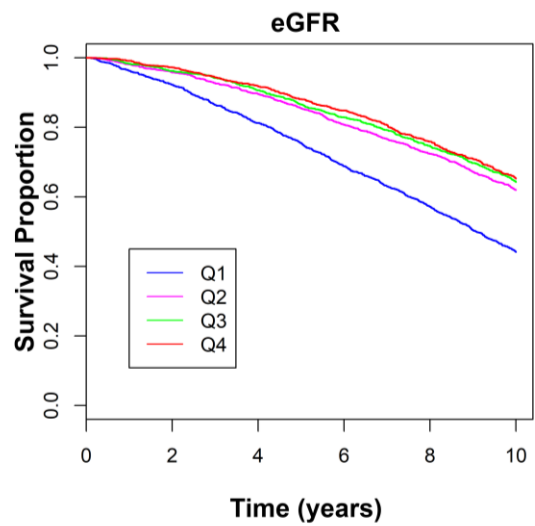
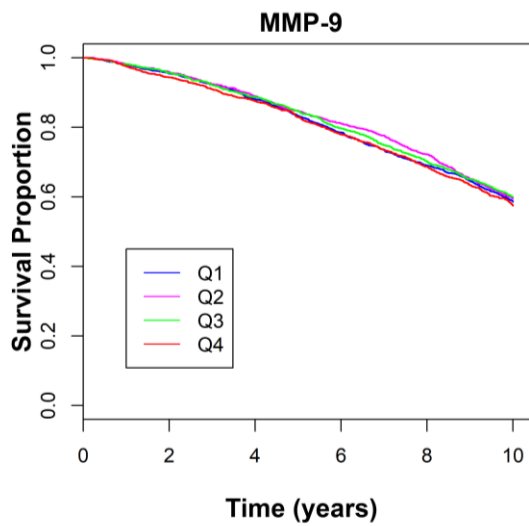
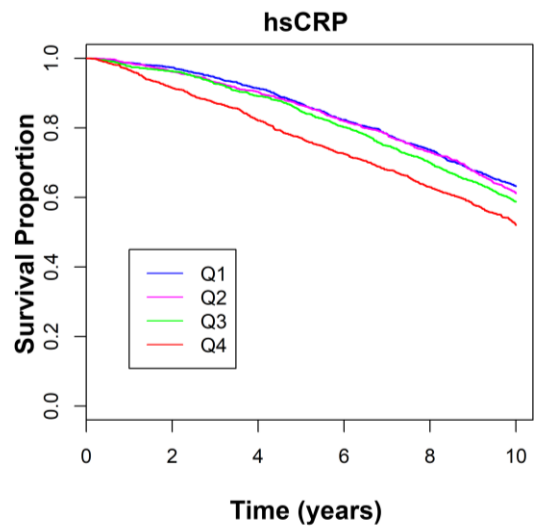
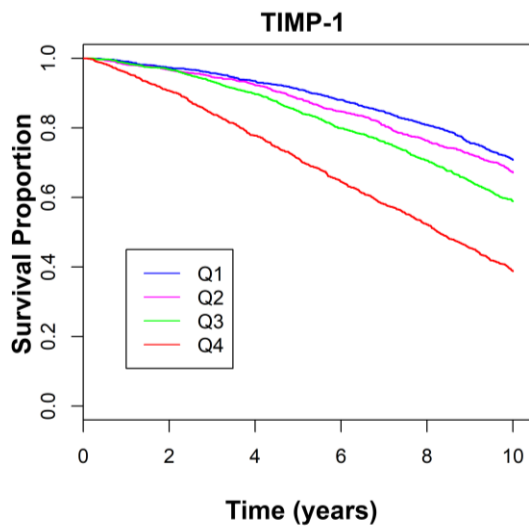


Addendum

Addendum Figure 1. The calibration of the baseline model with biomarkers.(28)



Addendum Figure 2. Kaplan Meier Curves for all-cause mortality related to Biomarkers and quartiles.



Addendum Table 1. Hazard ratios from Kaplan Meier survival analysis when categorized by quartiles.

Biomarker	Quartile 2 HRs (95% CI)	Quartile 3 HRs (95% CI)	Quartile 4 HRs (95% CI)	Reference
TIMP-1	1.00 (0.88 - 1.15)	1.16 (1.02 - 1.32)	1.47 (1.29 - 1.67)	Quartile 1
hsCRP	0.98 (0.87 - 1.11)	1.04 (0.92 - 1.17)	1.25 (1.11 - 1.41)	Quartile 1
MMP-9	0.96 (0.86 - 1.08)	0.91 (0.81 - 1.02)	1.01 (0.89 - 1.13)	Quartile 1

Biomarker	Quartile 1 HRs (95%CI)	Quartile 2 HRs (95% CI)	Quartile 3 HRs (95% CI)	Reference
eGFR	1.11 (0.98- 1.25)	0.90 (0.80 - 1.03)	0.95 (0.84 - 1.08)	Quartile 4

Addendum Table 2. Receiver Operator Curves (ROC) and Area Under the Curve (AUC) for Baseline Model + Biomarkers

Model	5-year Mortality		10-year Mortality	
	AUC	p vs Baseline	AUC	p vs Baseline
Baseline	0.7349	N.A.	0.7694	N.A.
Baseline + TIMP-1	0.7504	<0.0001	0.7783	<0.0001
Baseline + MMP9	0.7350	0.76	0.7694	0.99
Baseline + hsCRP	0.7401	0.0002	0.7704	0.345
Baseline + eGFR	0.7387	0.051	0.7714	0.155

TIMP-1 is the only biomarker that increases the AUC for both 5-year and 10-year mortality prediction over the baseline model ($p < 0.0001$) for both endpoints.

Addendum Table 3. Hazard Ratios for All-Cause and **Cause-Specific Death** with 95% CI for 10-year follow-up. Hazard ratios per 1 SD difference in each variable as assessed by Multivariable Cox regression models.

10-Year Multivariable Analysis of All Cause and Cause Specific Mortality (the model includes Four biomarkers, Troponin T& I & Framingham variables, BMI, and Statin use)						
Cause of death	TIMP-1 HR (95% CI)	Log-hsCRP HR (95% CI)	Log-eGFR HR (95% CI)	MMP-9 HR (95% CI)	Log-TnT HR (95% CI)	Log-TnI (HR 95% CI)
All Cause	1.21 (1.16 – 1.27)	1.08 (1.03 – 1.12)	0.98 (0.94 – 1.03)	1.03 (0.99 – 1.07)	1.33 (1.25- 1.41)	1.09 (1.04- 1.14)
CVD	1.23 (1.15 – 1.31)	1.09 (1.02 – 1.16)	0.93 (0.87 – 0.99)	1.01 (0.95 – 1.08)	1.34 (1.22- 1.47)	1.20 (1.11- 1.28)
Cause of death	TIMP-1 Wald Chi Square (p value)	Log-hsCRP Wald Chi Square (p value)	Log-eGFR Wald Chi Square (p value)	MMP-9 Wald Chi Square (p value)	Log-TnT Wald chi Square (p value)	Log-TnI Wald chi Square (p value)
All Cause	74.8 (p<0.0001)	11.0 (p=0.0009)	0.6 (p=0.426)	2.5 (p=0.112)	88.1 (p<0.0001)	11.6 (p<0.0007)
CVD	36.9 (p<0.0001)	5.8 (p=0.016)	4.7 (p=0.031)	0.1 (p=0.75)	37.7 (p<0.0001)	23.8 (p<0.0001)