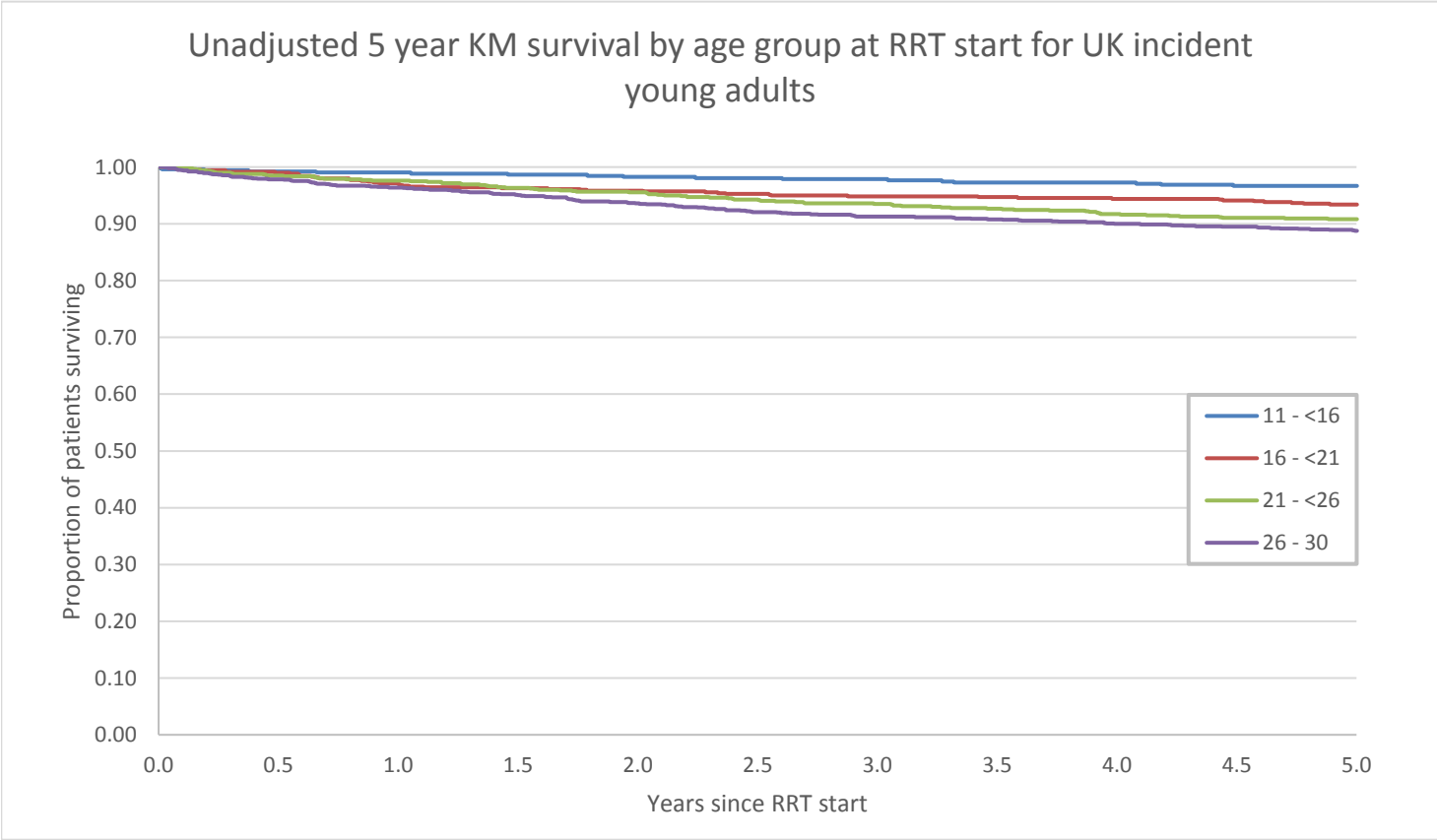


Supplementary figure 1. Unadjusted 5 years KM survival by age group at RRT start for UK incident young adults



Supplementary table 1. Details of inclusion criteria data queries

Type and number	Outcome	Total
Missing data		
23 missing paediatric start date	10 excluded: - 5 started RRT outside study window; - 1 non UK patient; - 4 no data	
1 incomplete biochemistry, ?recovered	0 excluded	17 excluded on missing data
1 transplant patient missing treatment at start	0 excluded	
1 missing RRT data	1 excluded: - no data	
22 missing adult renal registry number	6 excluded: - 1 private living related kidney donation with no UK follow up; - 4 unknown start; - 1 unconfirmed RRT status	
Discordant between databases		
6 discordant start dates	1 excluded: - started RRT outside study window	3 excluded on discordant data
2 first dynamic data date before start date	2 excluded: - 2 started RRT before start date	

RRT - renal replacement therapy

Supplementary table 2. Clinical epidemiology of UK incident young adults starting RRT by age group

	11 - <16	16 - <21	21 - <26	26 - 30	Total %
	N				
	%				
Age group	516	702	887	1265	3370
	15.3	20.8	26.3	37.5	100.0
Gender					
Male	292	408	534	718	1952
	56.6	58.1	60.2	56.8	57.9
Female	224	294	353	547	1418
	43.4	41.9	39.8	43.2	42.1
Ethnicity*					
White	400	574	699	971	2644
	77.5	81.8	78.8	76.8	78.5
Asian	86	64	93	145	388
	16.7	9.1	10.5	11.5	11.5
Black	15	37	59	88	199
	2.9	5.3	6.7	7.0	5.9
Other	13	22	25	45	105
	2.5	3.1	2.8	3.6	3.1
Missing	2	5	11	16	34
	0.4	0.7	1.2	1.3	1.0
Discordant	22	2	-	-	24
	4.3	0.3	-	-	0.7
Primary renal diagnosis**					
Glomerular Disease	121	199	287	373	980
	23.4	28.3	32.4	29.5	29.1
Tubulointerstitial disease	226	220	200	197	843
	43.8	31.3	22.5	15.6	25.0
- Renal dysplasia ± reflux	144	121	100	105	470
	27.9	17.2	11.3	8.3	13.9
- Obstructive	63	75	64	52	254
	12.2	10.7	7.2	4.1	7.5
- Other tubulointerstitial disease	19	24	36	40	119
	3.7	3.4	4.1	3.2	3.5
Miscellaneous renal disorders	37	151	215	304	707
	7.2	21.5	24.2	24.0	21.0
Systemic diseases affecting the kidney	13	31	108	299	451
	2.5	4.4	12.2	23.6	13.4
- Diabetes	0	6	49	220	275
	0.0	0.9	5.5	17.4	8.2
- Other systemic diseases	13	25	59	79	176
	2.5	3.6	6.7	6.2	5.2
Familial/hereditary nephropathies	79	76	62	65	282
	15.3	10.8	7.0	5.1	8.4
- Other familial/hereditary nephropathies	70	60	49	35	214
	13.6	8.5	5.5	2.8	6.4
- Polycystic kidney disease	9	16	13	30	68
	1.7	2.3	1.5	2.4	2.0
Missing	7	16	15	27	65
	1.4	2.3	1.7	2.1	1.9
Discordant	33	9	-	-	42
	6.4	1.3	-	-	1.3

*p<0.05, Chi-Square test

**p<0.0001, Chi-Square test

Those aged >21 are only present in the adult database and cannot have discordant data

Supplementary table 3. Transfer to adult services

	N	%	Median	Range	Interquartile range
Starting unit type					
Adult	2766	82.1			
Paediatric	604	17.9			
Transferred to adult services	568	94.0			
Known to adult Registry	553				
Lost (unknown to adult Registry)	15				
Not transferred	35	5.79			
Remain in Paediatric services	20				
Died prior to transfer	15				
Transferred overseas	1	0.2			
Age at transfer*	567		18.0	14.8 - 21.2	17.3 - 18.5
1999-2003	99	17.5	18.0	15.8 - 19.8	17.0 - 18.5
2004-2008	270	47.6	18.0	14.8 - 21.1	17.3 - 18.5
2009-2013	198	34.9	18.0	15.7 - 21.2	17.5 - 18.5