

Beta-blockers for heart failure with reduced, mid-range, and preserved ejection fraction: An individual patient-level analysis of double-blind randomized trials

The Beta-blockers in Heart Failure Collaborative Group

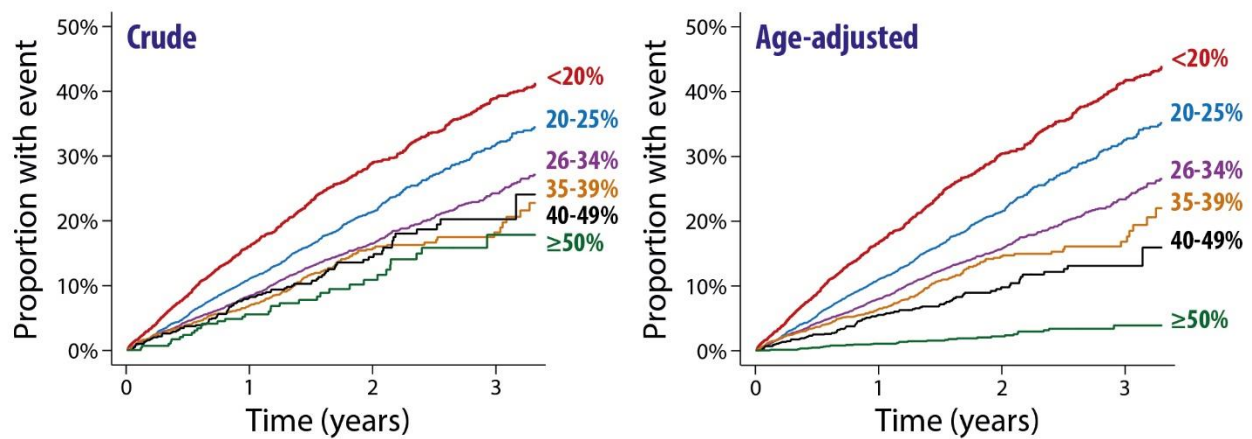


European Heart Journal, 2017 (ehx564)

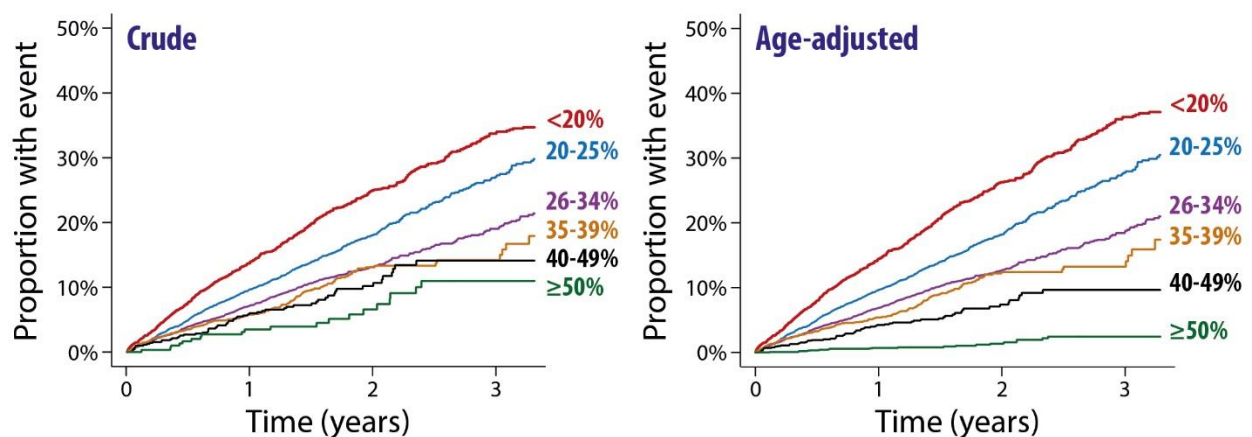
<https://doi.org/10.1093/eurheartj/ehx564>

Supplementary Figure S2: Crude and age-adjusted primary events according to baseline LVEF

A All-cause mortality



B Cardiovascular death



Kaplan Meier survival curves for observed events according to baseline LVEF category regardless of heart rhythm. For both all-cause mortality and cardiovascular death, the trend test using a stratified log-rank analysis was $p < 0.0001$.