

## Supplementary Information

### Effect of human very low-density lipoproteins on cardiotrophin-like cytokine factor 1 (CLCF1) activity

Sarah Pasquin<sup>1,†</sup>, Salma Chehboun<sup>1,†</sup>, Agnieszka Dejda<sup>2</sup>, Yasmine Meliani<sup>1</sup>, Virginia Savin<sup>3</sup>, Gregory, J. Warner<sup>4</sup>, Roger Bosse<sup>4</sup>, Aurélie Tormo<sup>1</sup>, Gaétan Mayer<sup>5</sup>, Mukut Sharma<sup>3</sup>, Przemyslaw Sapieha<sup>2</sup>, Catherine Martel<sup>6</sup> and Jean-François Gauchat<sup>1,\*</sup>

<sup>1</sup> Département de Pharmacologie et physiologie, Université de Montréal, Montreal, QC, H3T 1J4, Canada

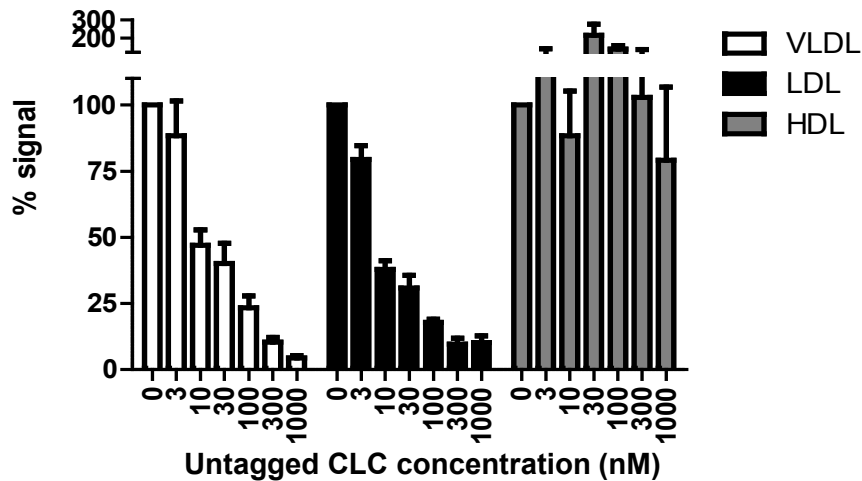
<sup>2</sup> Département de Biochimie et Médecine Moléculaire, Université de Montréal, Montreal, QC, H3T 1J4, Canada

<sup>3</sup> Renal Division, KCVA Medical Center, Kansas City, MO 64128-2226, USA

<sup>4</sup> Perkin Elmer, 940 Winter Street, Waltham, MA 02451, USA

<sup>5</sup> Faculté de Pharmacie, Université de Montréal, QC, H3T 1J4, Canada ¶

<sup>6</sup> Département de Médecine, Université de Montréal, Montreal, QC, H3T 1J4, Canada



**Figure S1.** VLDL-CLCF1 and LDL-CLCF1 proximity assay signal can be competed-out using excess of non-biotinylated CLCF1. Biotinylated hCLCF1 was mixed with LDL, HDL and VLDL covalently coupled to acceptor beads (10  $\mu\text{g}/\text{mL}$ ) in presence of increased concentrations of unlabelled hCLC (as indicated in the figure). Streptavidin donor beads (40  $\mu\text{g}/\text{mL}$ ) were further added for 1 h and 615 nm fluorescence signal assessed. Histograms indicate the mean fluorescence intensity of 3 independent samples  $\pm$  SD.

Figure 1-B

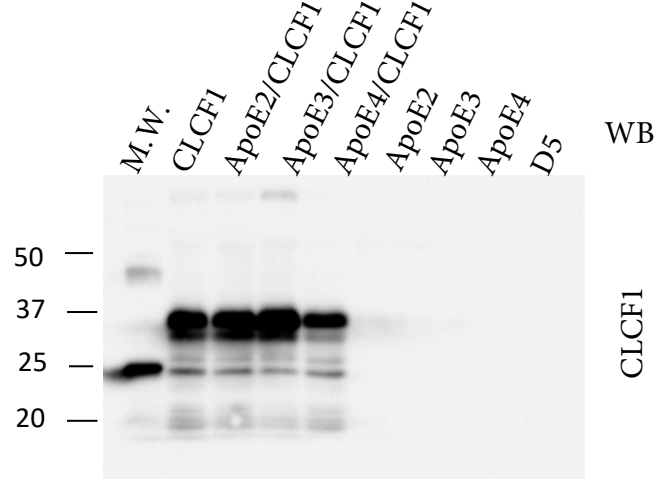
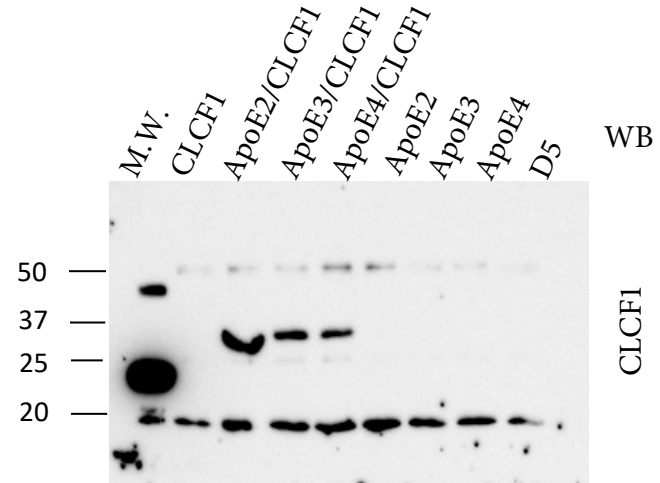
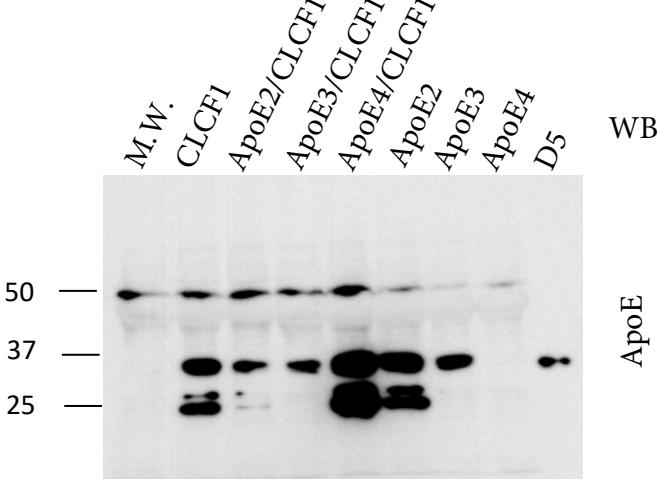
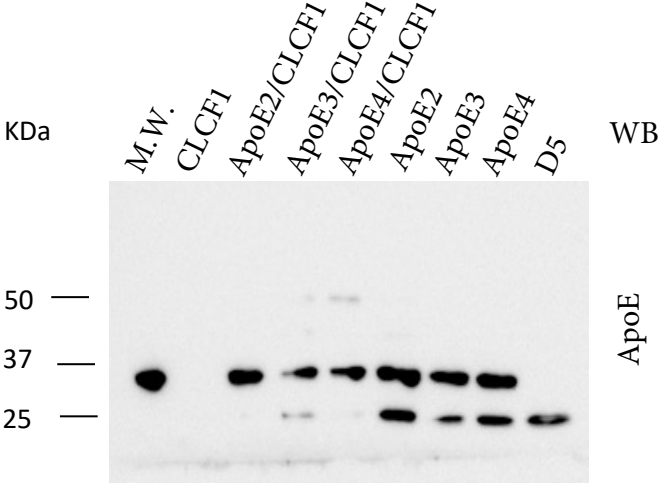


Figure 1-C

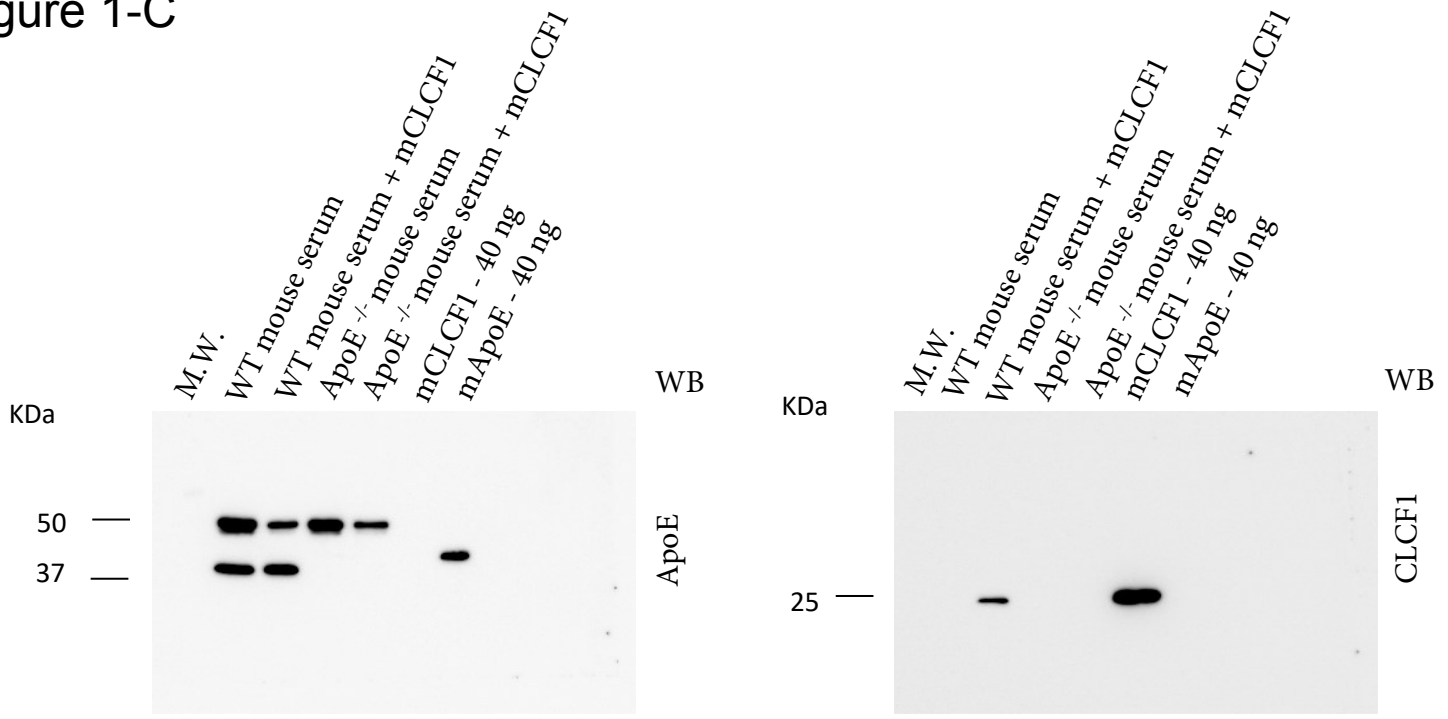


Figure 1-D

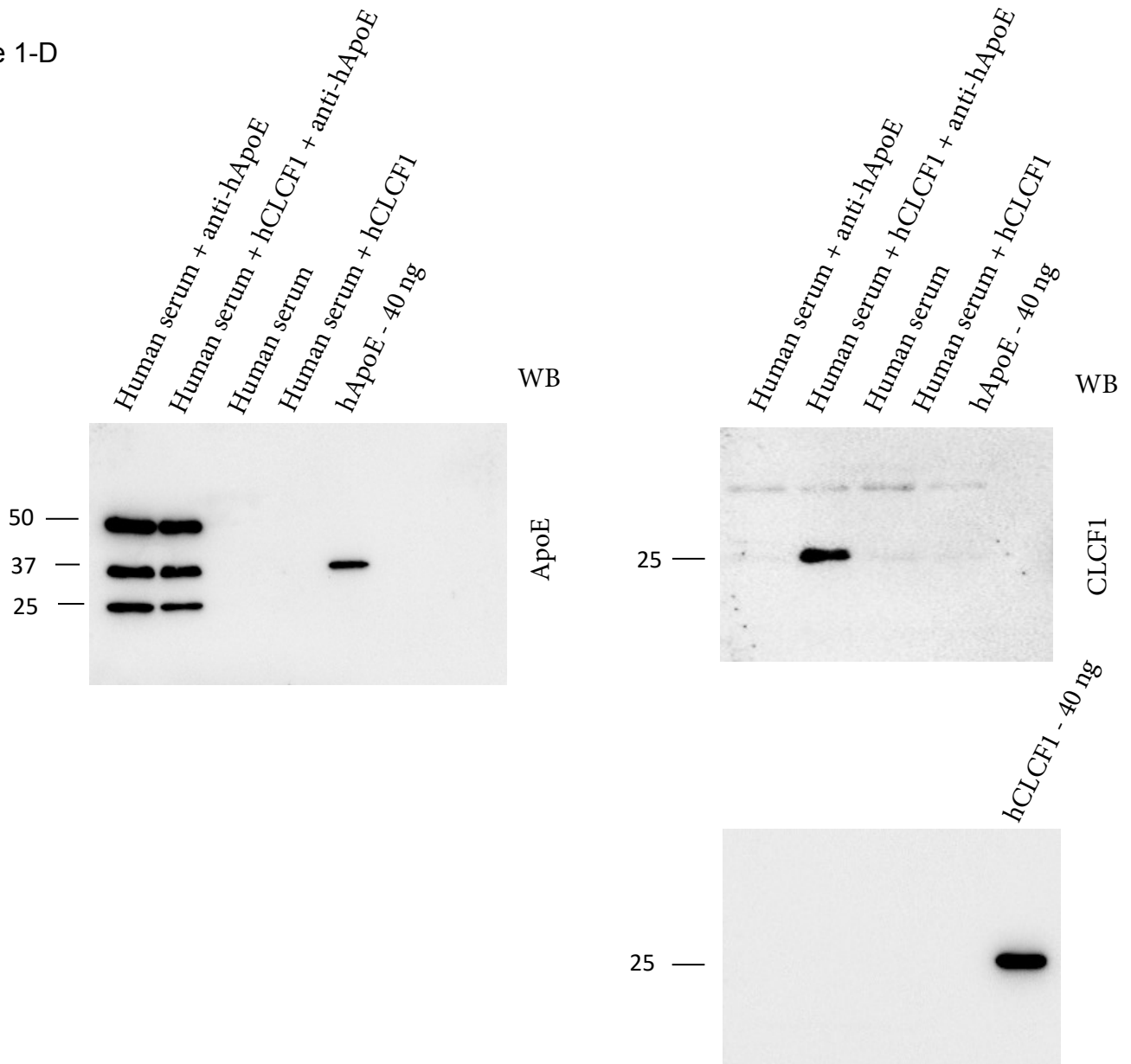


Figure 4-A

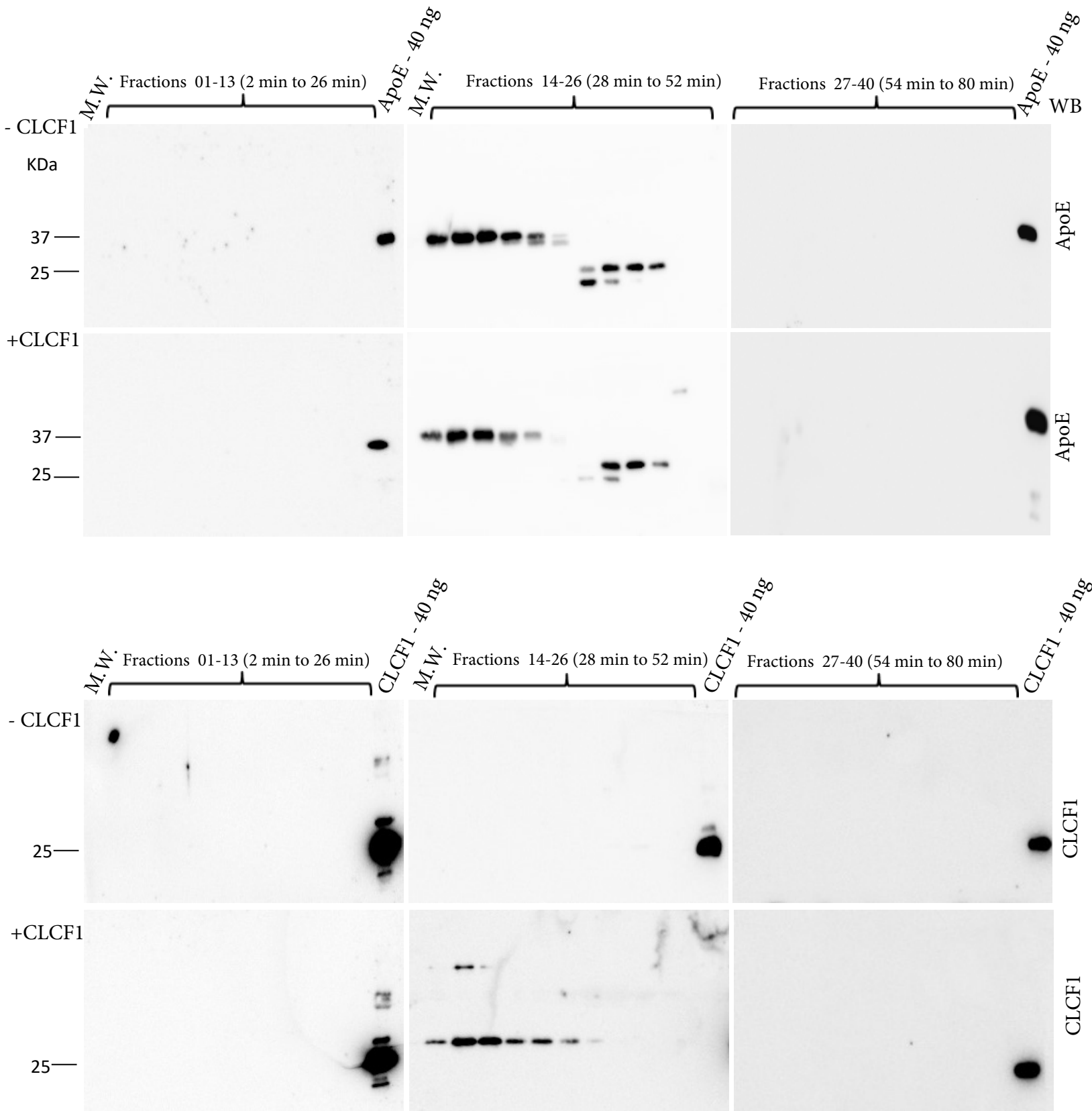


Figure 4-B

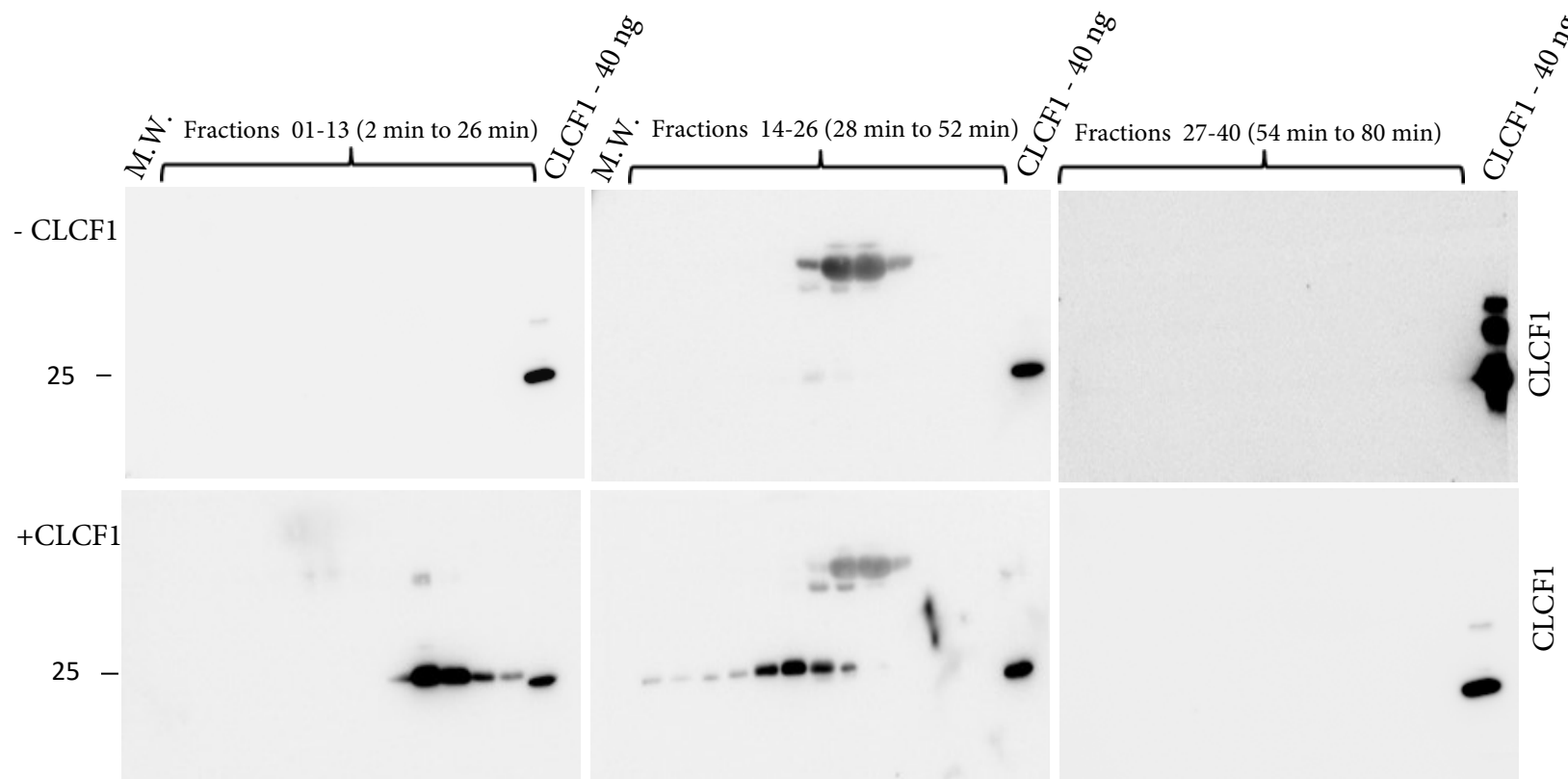
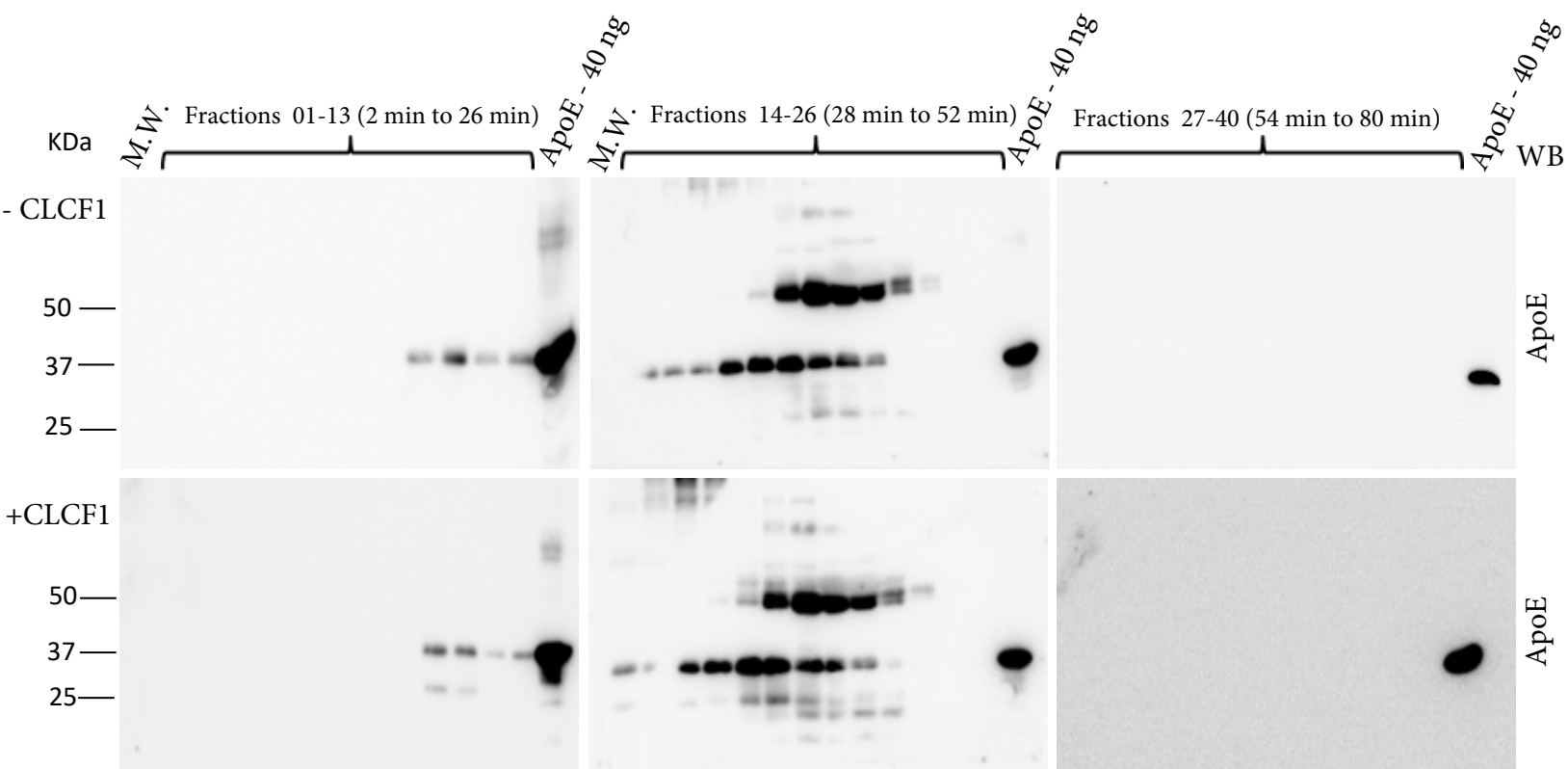


Figure 4-C

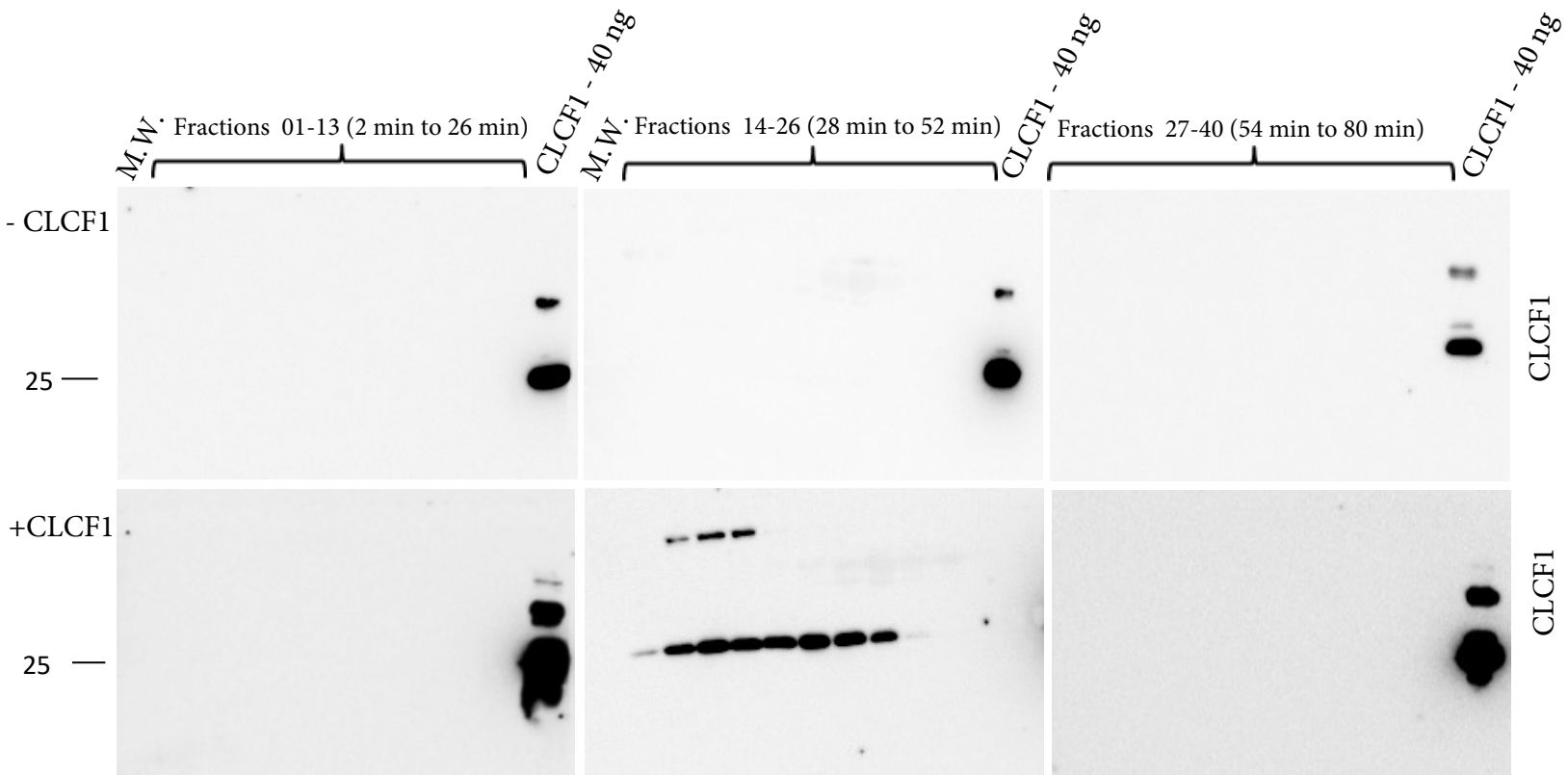
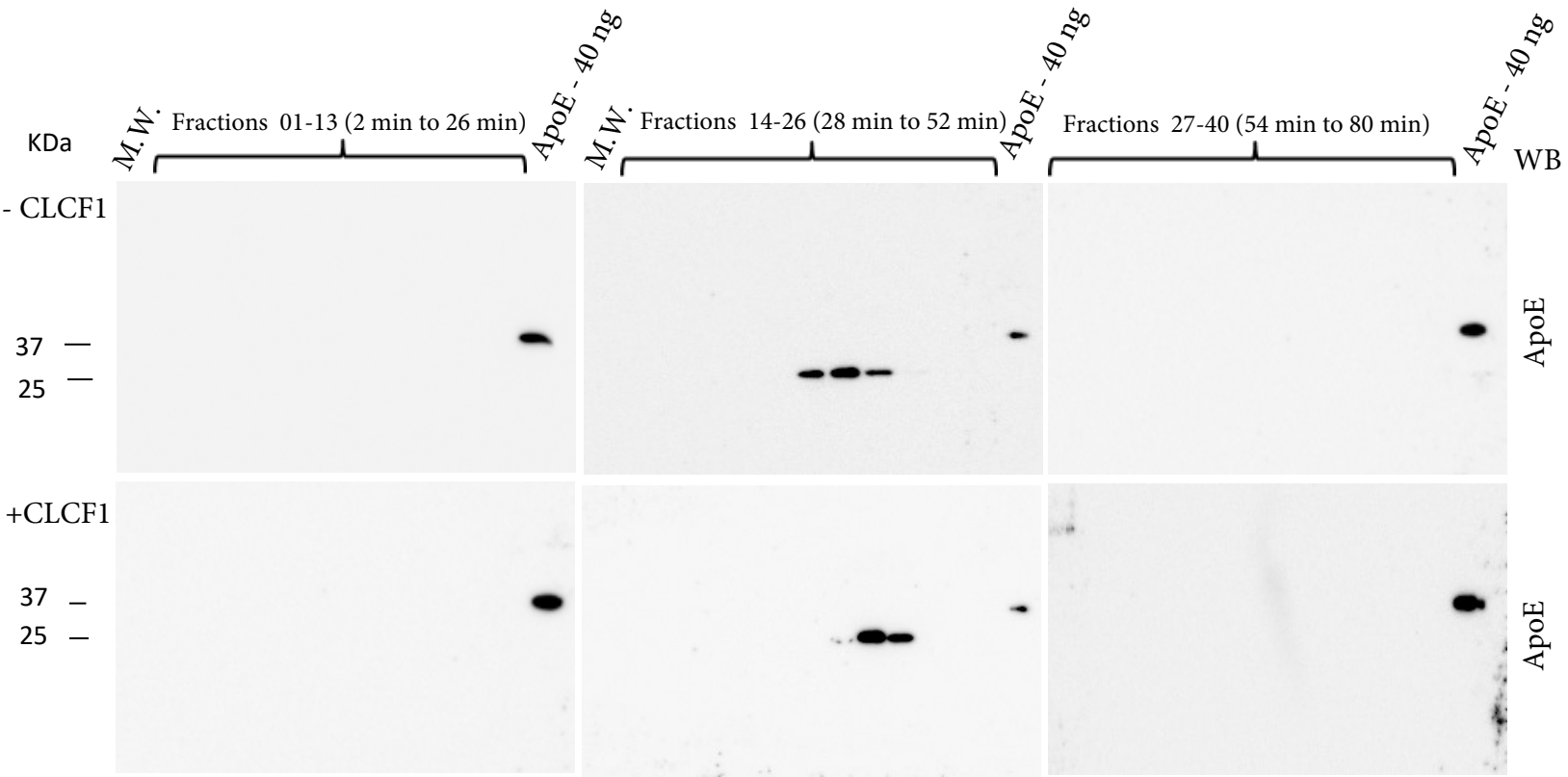
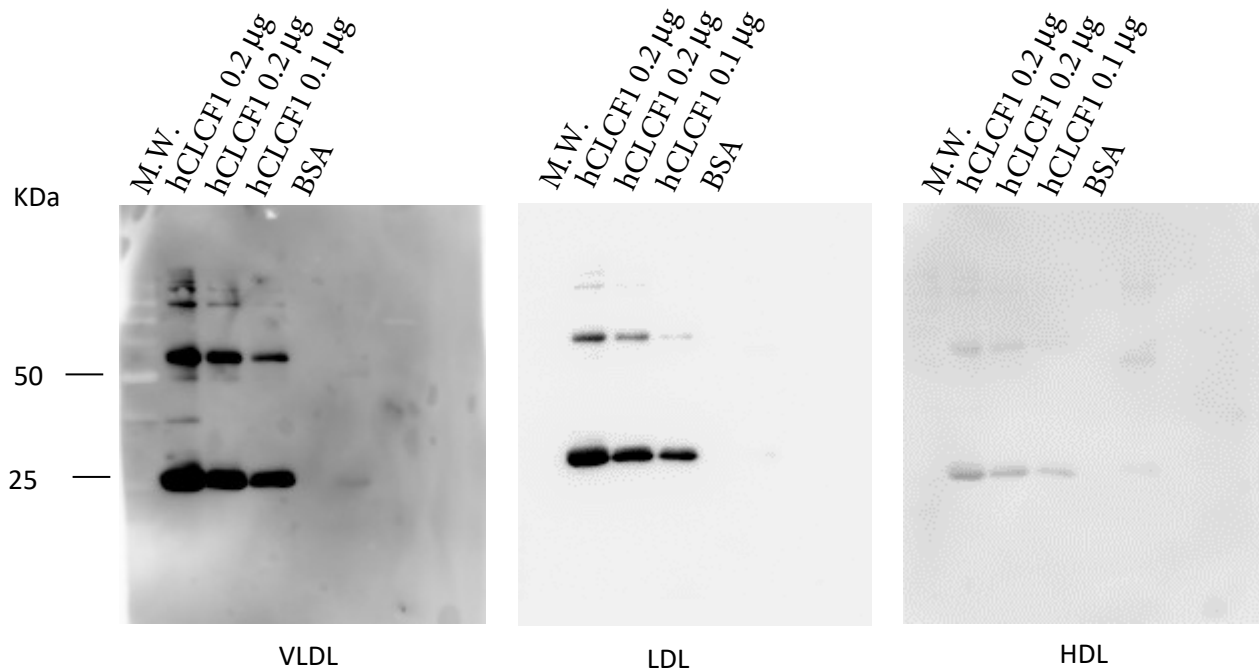


Figure 5-A



Coomassie blue

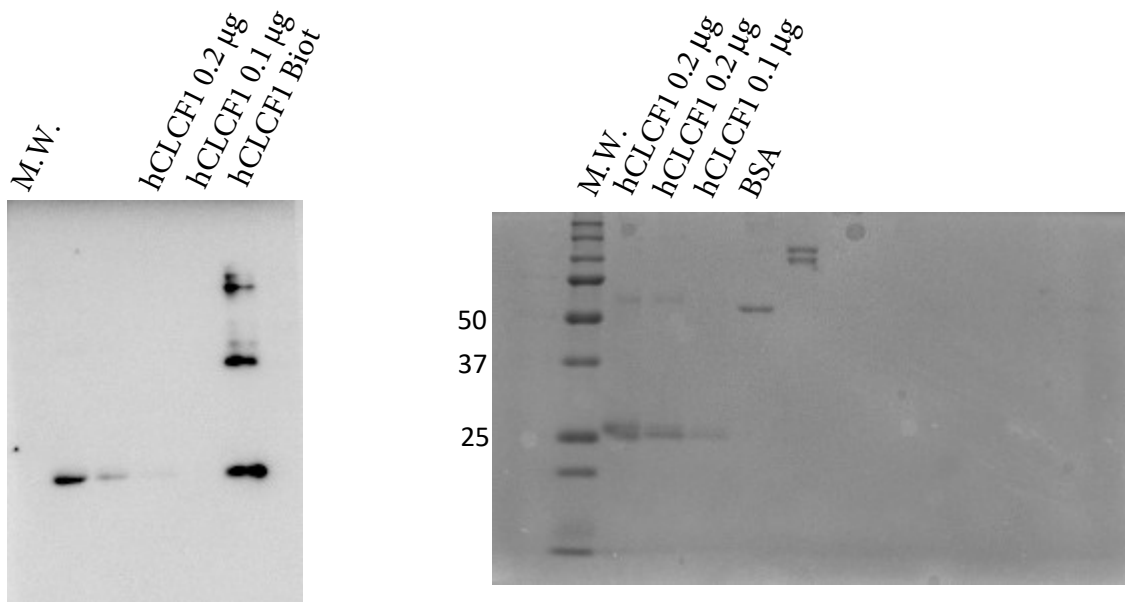




Figure 7-A

