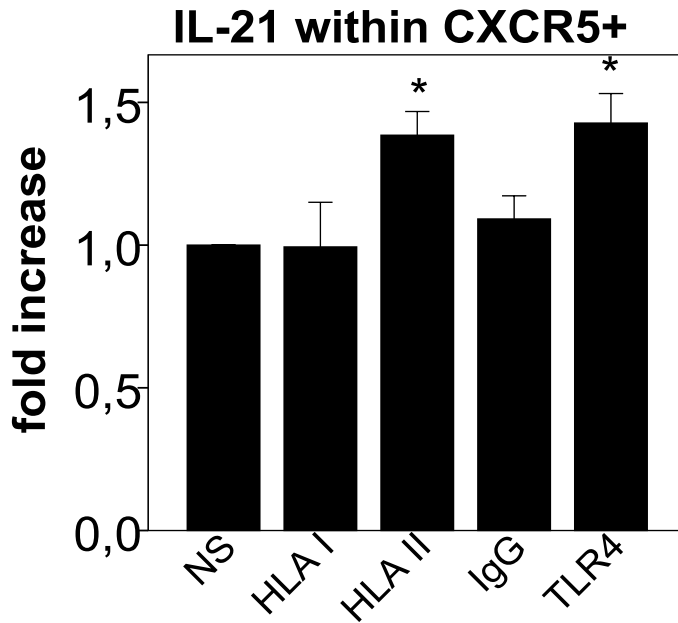


**Allogeneic Dendritic Cells Stimulated with Antibodies Against HLA Class II Polarize Naive T Cells in a Follicular Helper Phenotype**

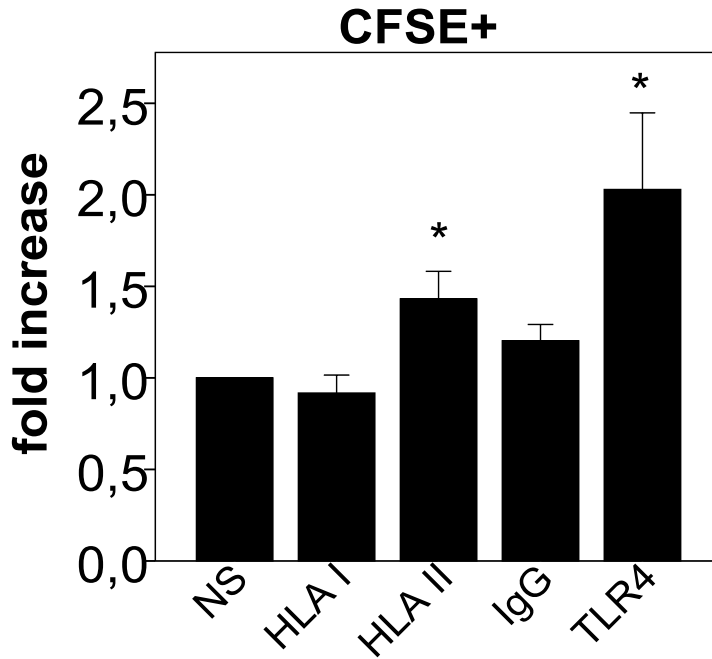
*Olivier Désy PhD<sup>1</sup>, Stéphanie Béland MSc<sup>1</sup>, Patrice Vallin MSc<sup>1</sup>, Julie Riopel MD FRCPC<sup>2</sup>, Eva Latulippe MD FRCPC<sup>2</sup>, Eric Wagner PhD<sup>3</sup> and Sacha A. De Serres MD SM FRCPC<sup>1\*</sup>*

## Supplementary Figure S1.



**Supplementary Figure S1. HLA-II-moDCs polarize CD4<sup>+</sup> naive T cells into a Tfh phenotype.** In all experiments, CD4<sup>+</sup> naive T cells were cocultured with stimulated moDCs for 6 days. Summary analysis of intracellular IL-21 expression (gated on CD3<sup>+</sup>CD4<sup>+</sup>CXCR5<sup>+</sup> cells). Values are expressed as the fold increase compared with levels in untreated cells (mean  $\pm$  SEM, n=9). \*, p<0.05; NS, non-stimulated; IgG, isotype control.

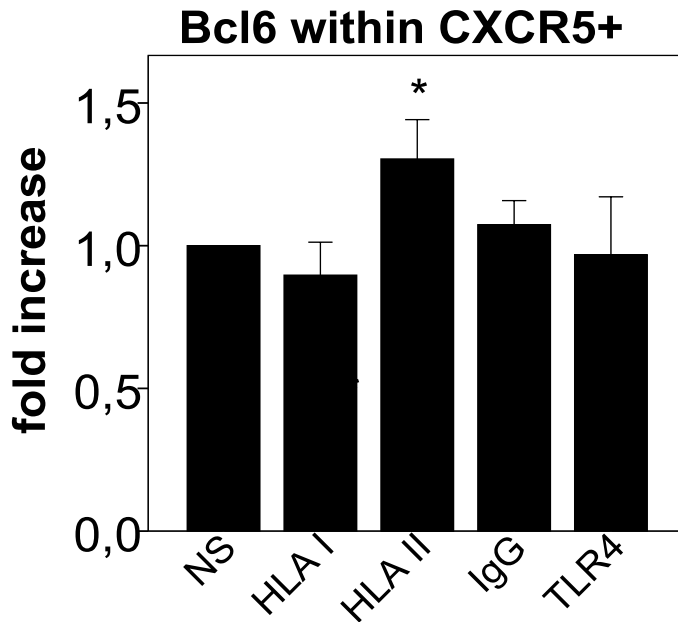
## Supplementary Figure S2.



### **Supplementary Figure S2. HLA-II-moDCs increase T cell proliferation in coculture.**

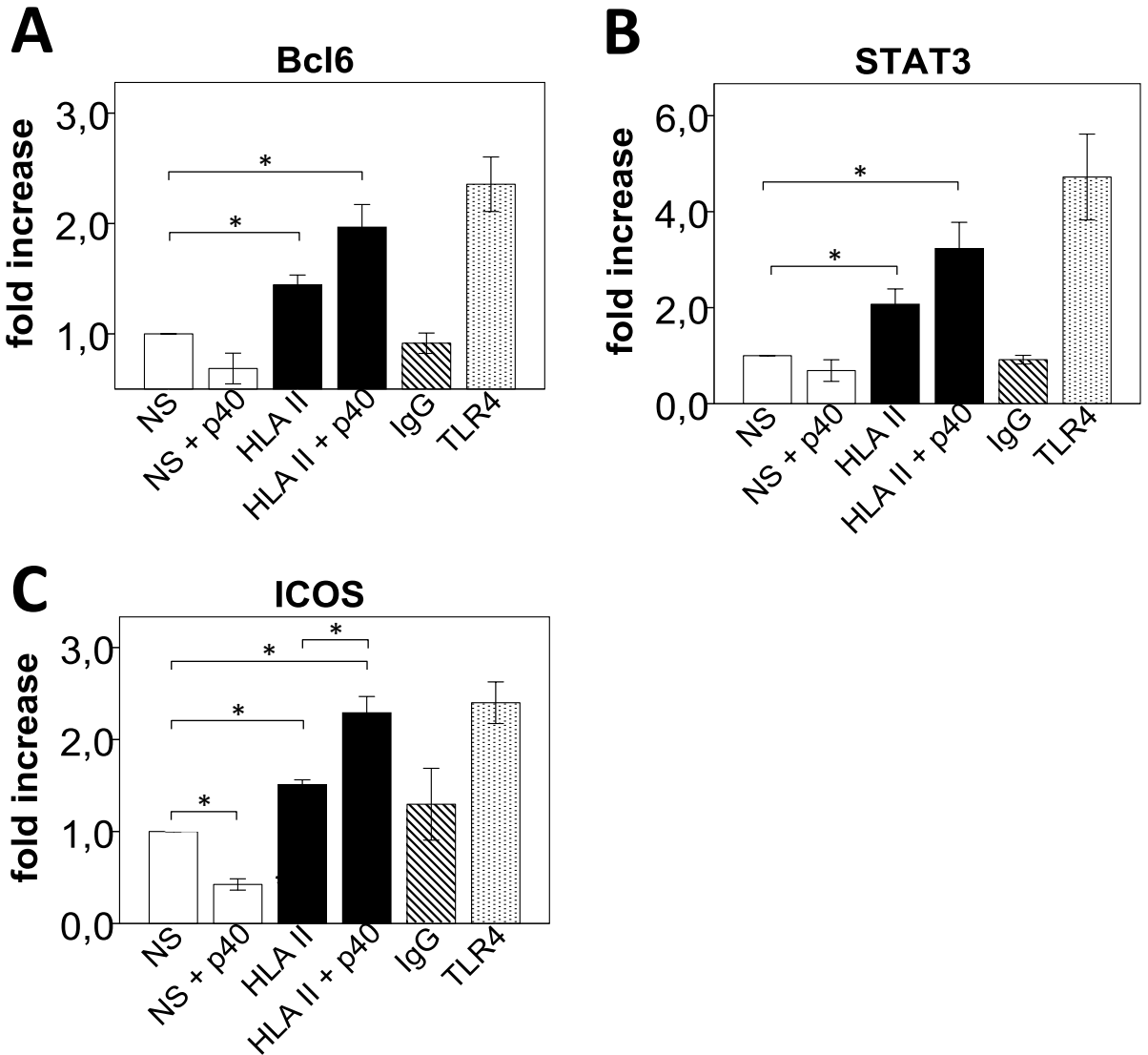
In all experiments, CD4<sup>+</sup> naive T cells were cocultured with stimulated moDCs for 6 days. Summary analysis of the CFSE positivity in the CD4<sup>+</sup> T cells. Values are expressed as fold increase compared with unstimulated cells (mean  $\pm$  SEM, n=7). \*, p<0.05; NS, non-stimulated; IgG, isotype control.

## Supplementary Figure S3.



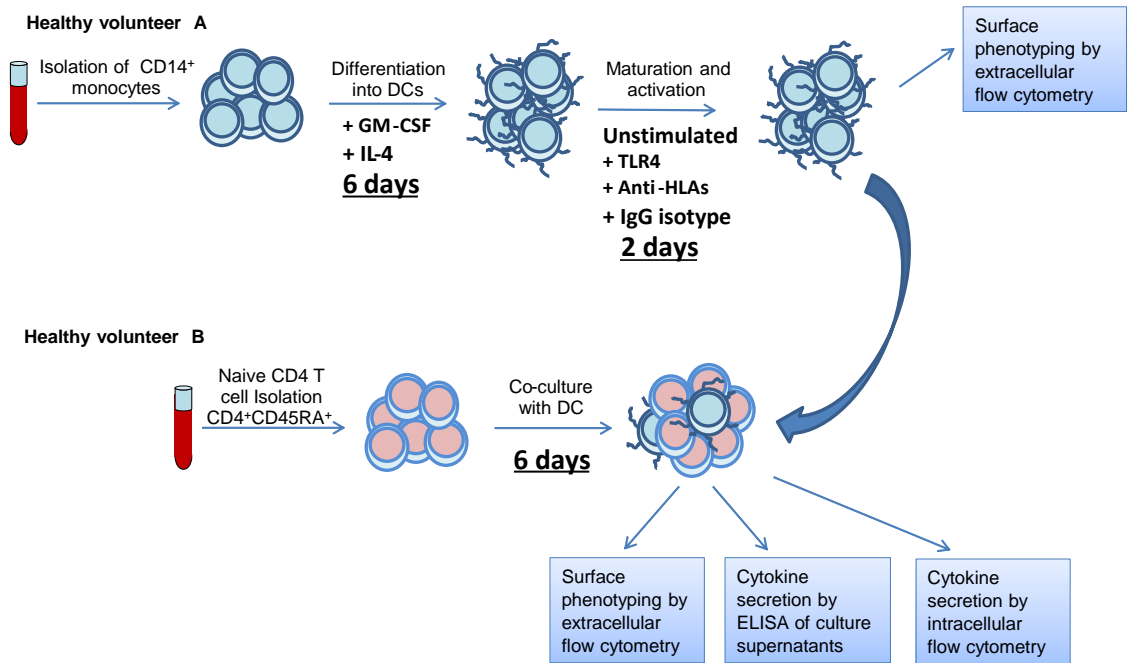
**Supplementary Figure S3. HLA-II-moDCs polarize CD4<sup>+</sup> naive T cells into a Tfh phenotype.** In all experiments, CD4<sup>+</sup> naive T cells were cocultured with stimulated moDCs for 6 days. Summary analysis of intracellular Bcl6 expression (gated on CD3<sup>+</sup>CD4<sup>+</sup>CXCR5<sup>+</sup> cells). Values are expressed as the fold increase compared with levels in untreated cells (mean  $\pm$  SEM, n=9). \*, p<0.05; NS, non-stimulated; IgG, isotype control.

## Supplementary Figure S4.



**Supplementary Figure S4. Effect of p40 on the expression of Tfh-specific transcription factors and surface phenotype.** Flow cytometry analysis of (A) Bcl6, (B) STAT3 and (C) ICOS in CD4<sup>+</sup> T cells stimulated with allogeneic unstimulated moDCs (NS), NS + p40 subunit of IL-12, HLA-II-moDCs (HLA II), HLA II + p40 subunit of IL-12, IgG2a-moDCs (IgG) and TLR4 for 6 days (mean  $\pm$  SEM, n=5). \*, p<0.05; NS, non-stimulated; IgG, isotype control

# Supplementary Figure S5.



**Supplementary Figure S5. *In vitro* model used for the generation of Tfh cells**