

Supplementary Online Content

Lacuey N, Hampson JP, Theeranaew W, et al. Cortical structures associated with human blood pressure control. *JAMA Neurol*. Published online November 27, 2017. doi:10.1001/jamaneurol.2017.3344

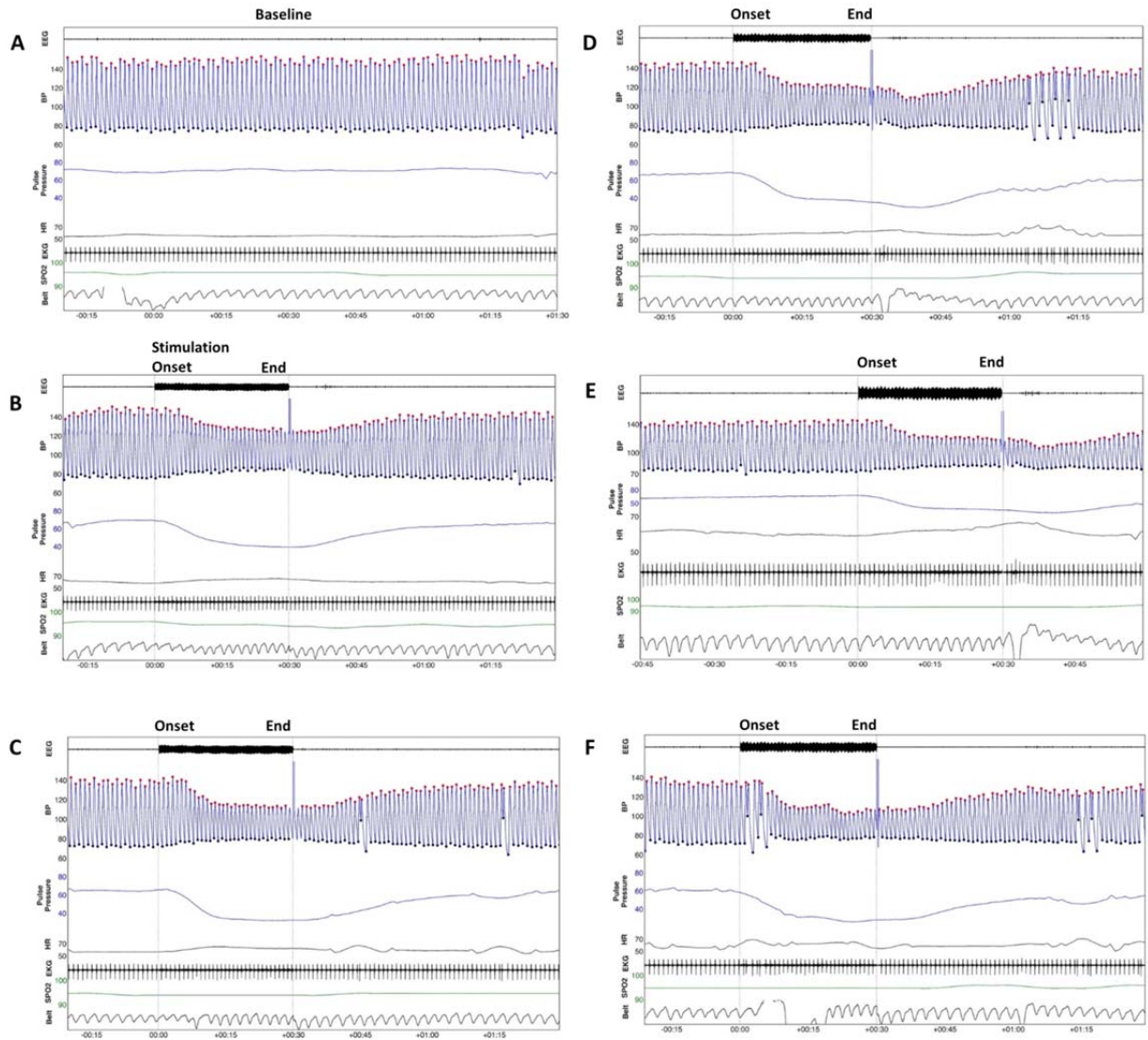
eTable. Electrode Contacts Location in Each Patient

eFigure. Stimulation of Brodmann Area 25 in Patient 12 Induced Decrease of Systolic Blood Pressure and Pulse Pressure

This supplementary material has been provided by the authors to give readers additional information about their work.

eTable. Electrode Contacts Location in Each Patient

Case	AMY	H	Insula (anterior)	OF	T Pole	Lateral T	Basal T	AC	Subcallosal	PC
1	2 (L)	0	0	4 (L)	0	4(L)	0	0	0	0
2	2 (L)	0	0	4 (L)	0	0	0	0	0	2 (L)
3	3 (L)	0	0	4 (L)	0	0	0	0	0	0
4	3(L)	4 (L)	0	0	2 (L)	4(L)	0	0	0	0
5	4 (L)	4 (L)	0	0	0	0	0	0	0	0
6	3 (L)	0	0	0	0	2 (L)	0	0	0	0
7	2 (L)	4 (L)	3 (L)	0	0	4 (L)	0	4 (L)	2 (L)	0
8	0	0	2(L)	0	2(R) 2(L)	2(L)	2(L)	2 (L)	2 (L)	0
9	2(R)	0	0	0	0	0	0	0	2 (R)	0
10	0	2 (L)	0	0	2 (L)	4(L)	0	3 (L)	0	0
11	2 (R)	3 (R)	0	4 (R)	4 (R)	4 (R)	0	2 (R)	0	0
12	0	0	3(L)	0	0	0	0	2 (L)	3 (L)	0



eFigure. Stimulation of Brodmann Area 25 in Patient 12 Induced Decrease of Systolic Blood Pressure and Pulse Pressure

Legend. **A)** Cardiovascular features in the resting state before stimulation session (baseline). Cardiovascular responses after stimulation with **B)** 5 mA, **C)** 7 mA, **D-E)** 6 mA and **F)** 8 mA. Red dots represent SAP and black dots DAP.