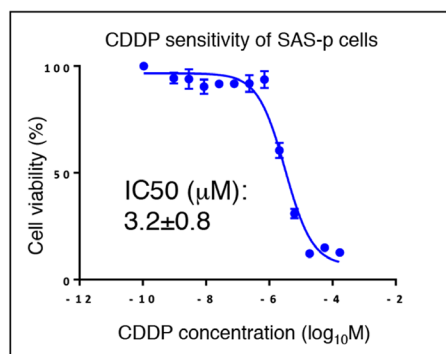


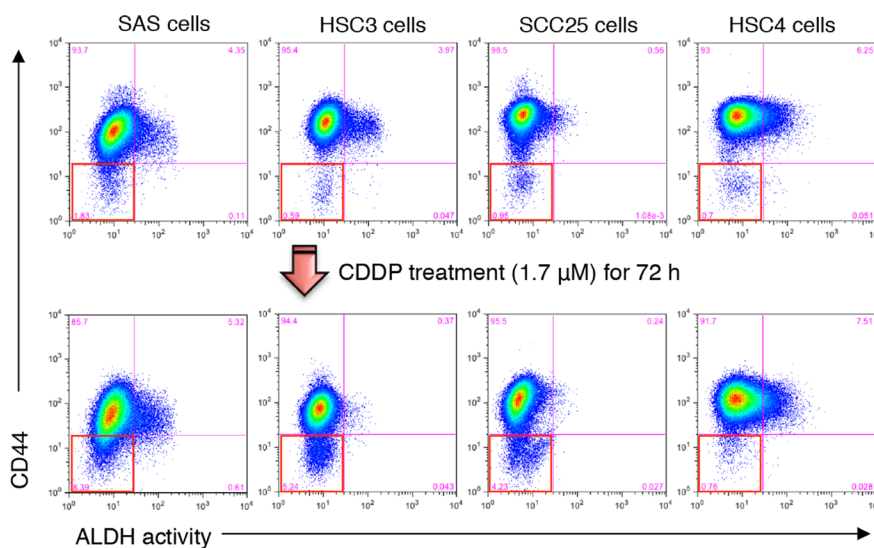
# CD44 exerts a functional role during EMT induction in cisplatin-resistant head and neck cancer cells

## SUPPLEMENTARY MATERIALS

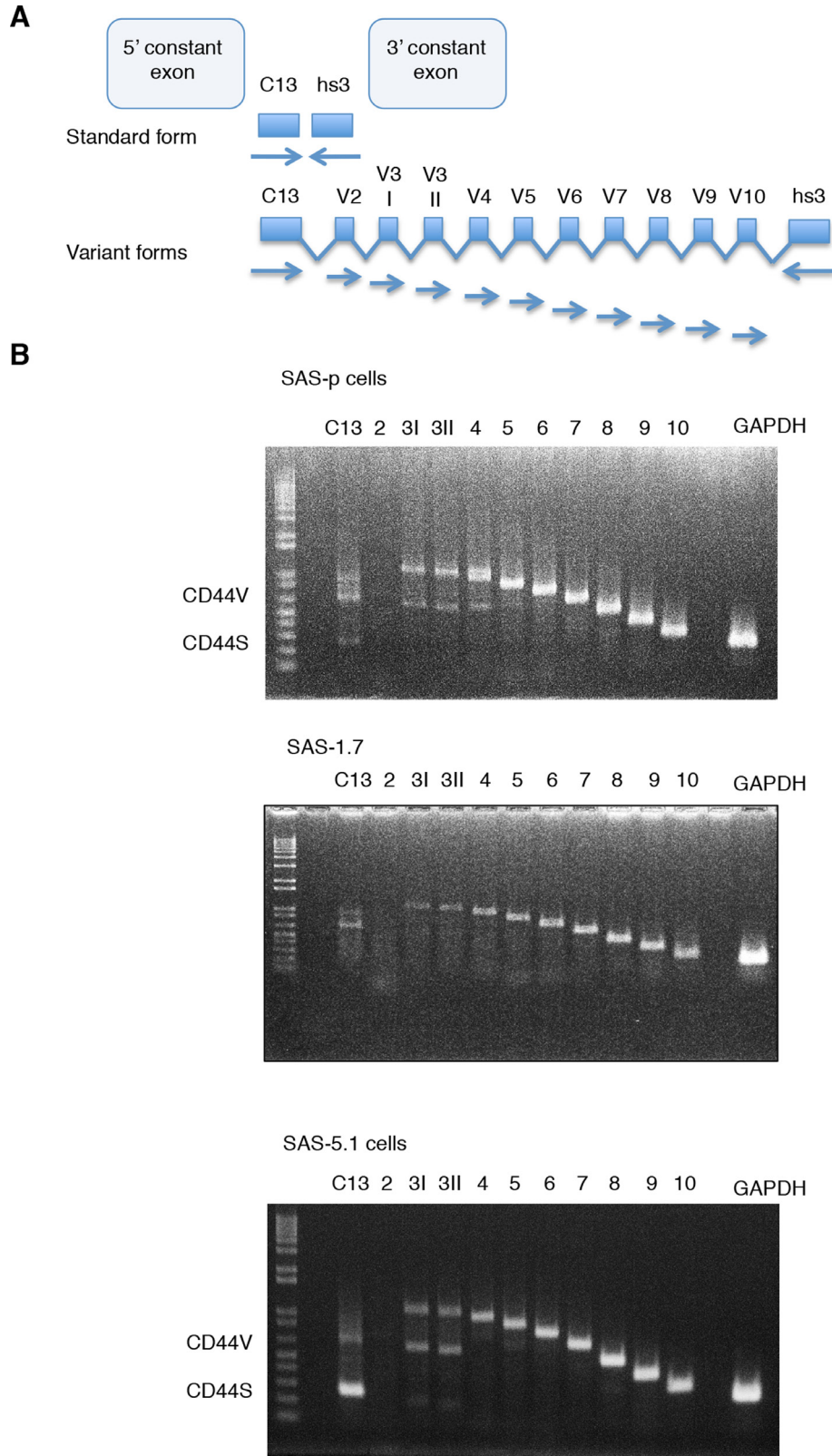
**A**



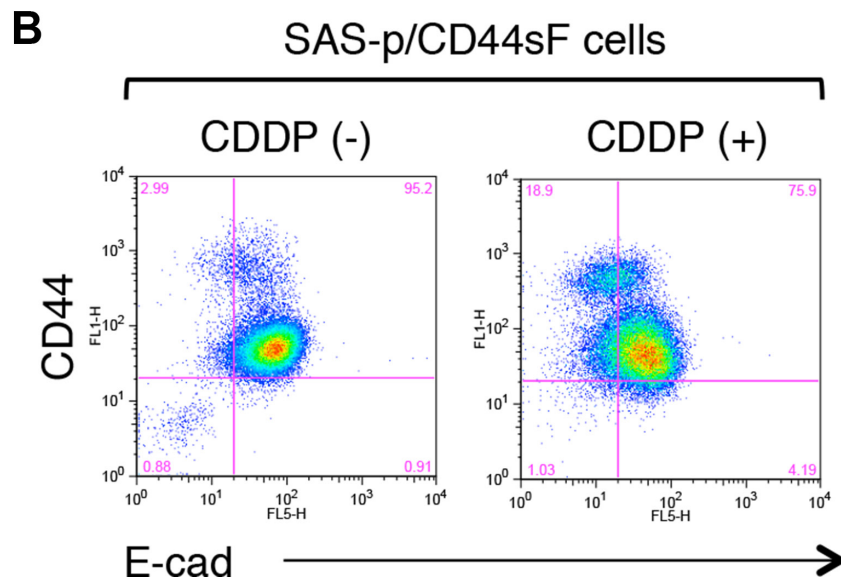
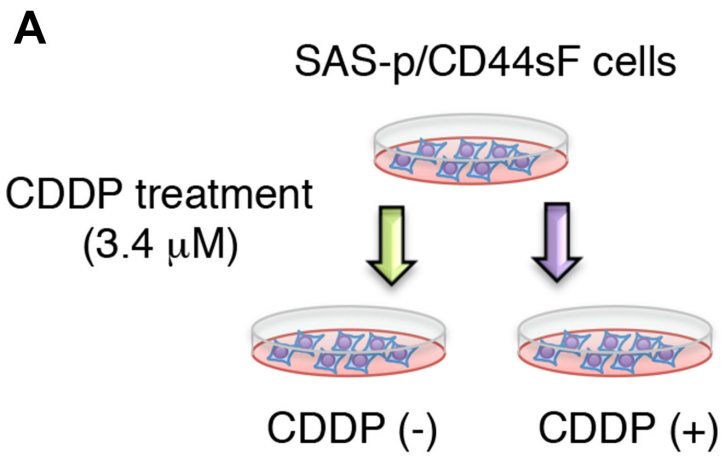
**B**



**Supplementary Figure 1: Flow cytometry analysis of CDDP-treated oral cancer cells. (A)** The IC50 values for CDDP when used to treat SAS cells. **(B)** Expression of CD44 and ALDH activity by CDDP-treated cells.



**Supplementary Figure 2: PCR analysis of CD44 isoforms expressed by SAS derivatives.** (A) A schematic illustration of the specific primers used to amplify CD44 isoforms. (B) Expression of CD44 isoforms by SAS derivatives.



**Supplementary Figure 3: CDDP treatment induces cell surface localization of CD44s in SAS cells.** (A) Overview of the method used to establish CD44s-expressing SAS-p cells. (B) Localization of CD44s in SAS cells after exposure to 3.4  $\mu$ M CDDP.

**Supplementary Table 1: Primer sequence used for this study**

<b>Primer name</b>	<b>Nucleotide sequence</b>
hACTB Fw	5'-ggacttcgagcaagagatgg-3'
hACTB Rv	5'-agcactgtgtggcgtacag-3'
hZEB1 Fw	5'-accagacagtgtaccagg-3'
hZEB1 Rv	5'-acatcctgctcatctgcct-3'
hSnail Fw	5'-gagagctgcaggactctaat-3'
hSnail Rv	5'-ggacagagtcccagatgagc-3'
hSlug Fw	5'-cttttcttgcctcactgc-3'
hSlug Rv	5'-agcagccagattcctcatgt-3'
hTwist Fw	5'-ggagtccgagctttacgag-3'
hTwist Rv	5'-ccagcttgagggtctgaatc-3'