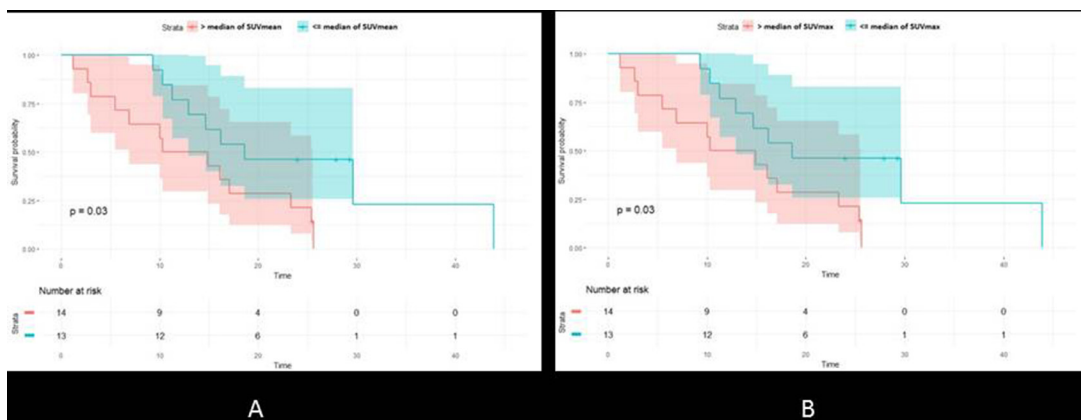


# <sup>18</sup>F-fluorothymidine PET for predicting survival in patients with resectable pancreatic cancer

## SUPPLEMENTARY MATERIALS



**Supplementary Figure 1:** Kaplan Meier curves based on the sample median of the respective tracer uptake measurement (A) SUVmean or (B) SUVmax are displayed to illustrate differences between patients with low and high tracer uptake values. Ninety-five % confidence bands are given for estimated survival probabilities as well as the p-value for the log-rank test for equal survival curves.