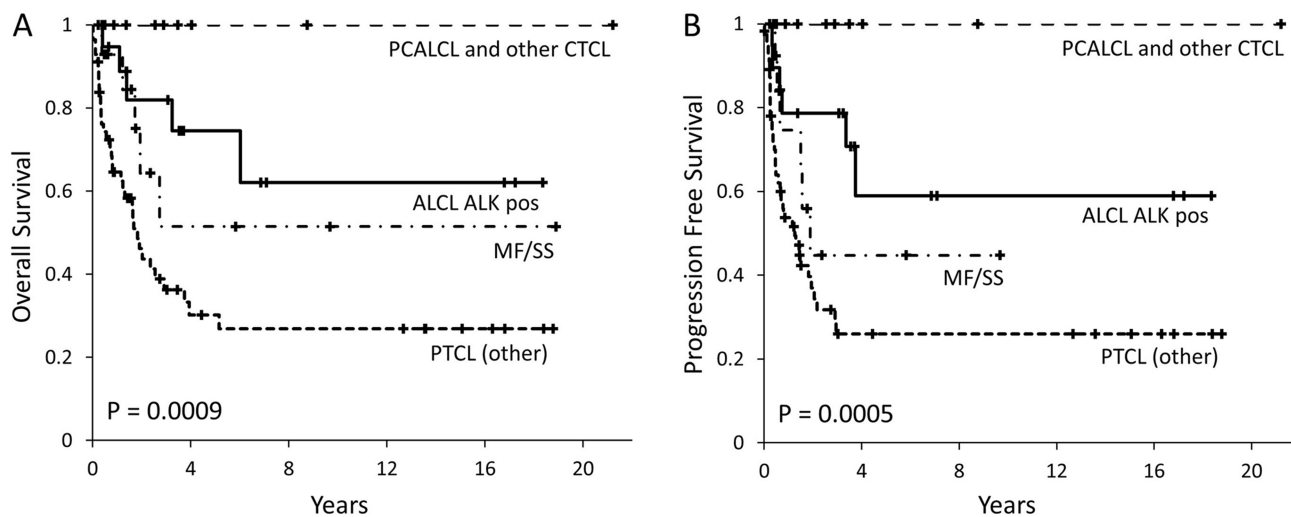


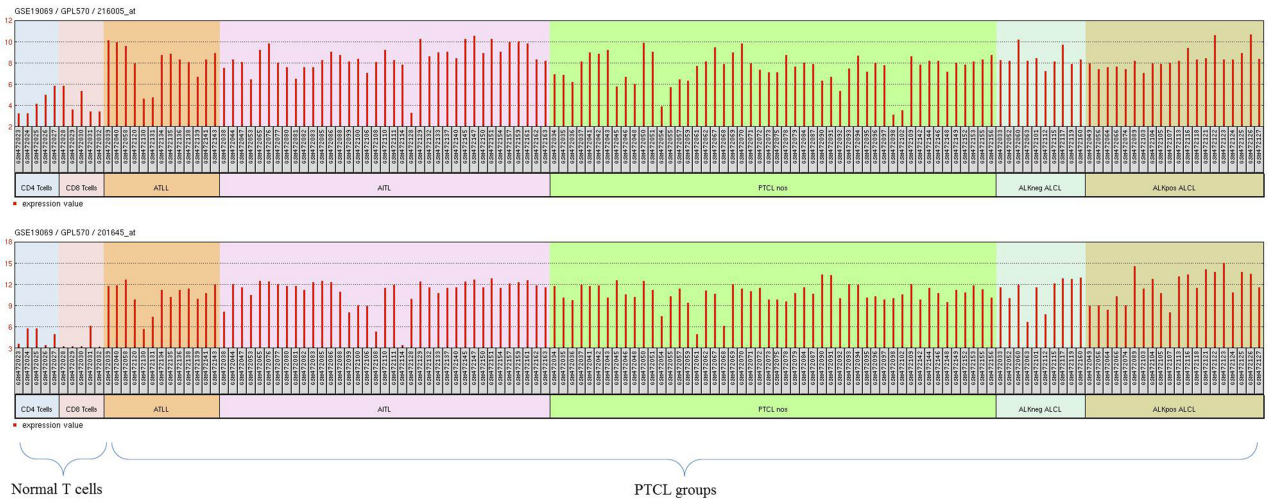
Evaluation of tenascin-C by tenatumomab in T-cell non-Hodgkin lymphomas identifies a new target for radioimmunotherapy

SUPPLEMENTARY MATERIALS

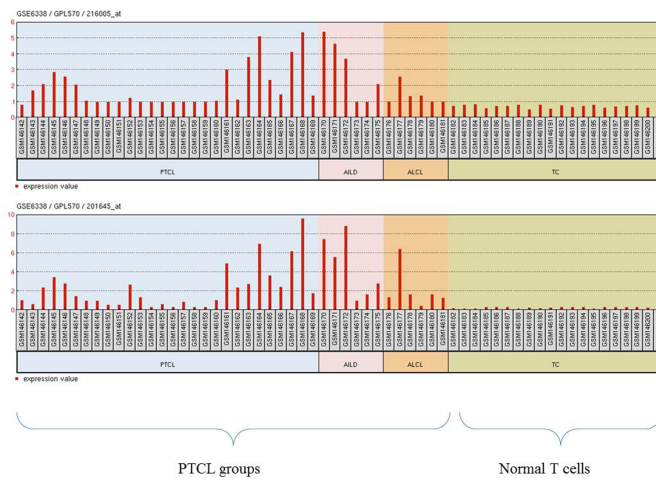


Supplementary Figure 1: Overall survival (A) and progression free survival (B) according to diagnosis in the whole cohort. ALCL ALK+:anaplastic large cell lymphoma ALK positive (N = 19); PTCL others: peripheral T-cell lymphoma with diagnosis different than ALCL ALK positive (N = 56) ; MF/SS: Mycosis fungoides/Sézary syndrome (N = 14); PCALCL: primary cutaneous ALCL (N = 6); Others: includes CD4+ small/medium cell primary cutaneous lymphoma (N = 5).

A Iqbal et al., GSE19069



B Piccaluga et al., GSE6338



Supplementary Figure 2: Detailed view of expression values for TNC probes (210065_at and 201645_at) in all considered normal and lymphoma samples for (A) Iqbal et al. 2010 [25] GSE19069 dataset and, (B) Piccaluga et al. 2007 [26] dataset GSE6338.

Supplementary Table 1: Proportion of involved areas according to method of detection

Histology	N	Digital Determination - Continuous (%)	Digital Determination - Score (%)				Manual Determination - Score (%)			
		Median (range)	0-25	26-50	51-75	76-100	0-25	26-50	51-75	76-100
Precursor (lymphoblastic) T-cell NHL	3	67 (0-75)	1	0	2	0	1	0	2	0
<i>Peripheral T-cell lymphoma, not otherwise specified</i>	20	44 (0-83)	5	9	5	1	5	9	5	1
<i>Anaplastic large cell lymphoma, ALK negative</i>	21	67 (0-90)	2	2	14	3	2	2	14	3
<i>Anaplastic large cell lymphoma, ALK positive</i>	19	53 (22-85)	0	8	9	2	0	8	9	2
<i>Angioimmunoblastic T-cell lymphoma</i>	9	60 (30-90)	0	2	6	1	0	2	6	1
<i>Enteropathy-associated T-cell lymphoma</i>	2	42 (0-84)	1	0	0	1	1	0	0	1
<i>Hepatosplenic T-cell lymphoma</i>	1	38 (38-38)	0	1	0	0	0	1	0	0
PTCL (subtotal)	72	58 (0-90)	8	22	34	8	8	22	34	8
<i>Mycosis fungoides</i>	13	34 (0-70)	1	9	3	0	1	9	3	0
<i>Primary cutaneous anaplastic large cell lymphoma</i>	6	56 (0-73)	1	2	3	0	1	2	3	0
<i>CD4⁺ small/medium cell primary cutaneous lymphoma</i>	5	0 (0-45)	3	2	0	0	3	2	0	0
<i>Sézary syndrome</i>	1	56 (56-56)	0	1	0	0	0	1	0	0
CTCL (subtotal)	25	34 (0-73)	5	14	6	0	5	14	6	0
Total	100	51 (0-90)	14	36	42	8	14	36	42	8

Legend: NHL: non-Hodgkin lymphoma; PTCL: peripheral T-cell lymphoma; CTCL: cutaneous T-cell lymphoma.

Supplementary Table 2: Multivariate analysis for PFS and OS in systemic T-cell NHL patients with digital image analysis (N = 75)

Factors	Multivariate for PFS				Multivariate for OS			
	HR (95% CI)	P value	HR (95% CI)	P value	HR (95% CI)	P value	HR (95% CI)	P value
Proportion of involved areas (%) (by Digital Image Analysis)								
0-50	1.00				1.00			
51-100	0.49 (0.25-0.95)	0.0337			0.56 (0.28-1.12)	0.1034		
Proportion of involved areas (continuous value) (by Digital Image Analysis)			0.32 (0.09-1.17)	0.0870			0.31 (0.08-1.23)	0.0944
Age								
≤ 60	1.00		1.00		1.00		1.00	
> 60	1.54 (0.70-3.38)	0.2866	1.36 (0.62-2.99)	0.4422	1.81 (0.81-4.05)	0.1485	1.65 (0.75-3.61)	0.2144
Gender								
Female	1.00		1.00		1.00		1.00	
Male	1.13 (0.57-2.24)	0.7366	1.19 (0.60-2.34)	0.6184	1.48 (0.73-3.02)	0.2797	1.57 (0.76-3.21)	0.2203
IPI								
Low	1.00		1.00		1.00		1.00	
Interm-Low	1.67 (0.59-4.70)	0.3330	1.75 (0.62-4.97)	0.2927	1.98 (0.67-5.84)	0.2155	2.01 (0.68-5.95)	0.2069
Interm-High	1.78 (0.69-4.77)	0.2481	1.80 (0.65-4.94)	0.2555	1.87 (0.64-5.51)	0.2542	1.80 (0.60-5.39)	0.2964
High	4.11 (1.61-10.52)	0.0032	4.09 (1.53-10.92)	0.0049	5.12 (1.93-13.54)	0.0010	5.14 (1.91-13.89)	0.0012

Legend: NHL: non-Hodgkin lymphoma; PFS: progression free survival; OS: overall survival.