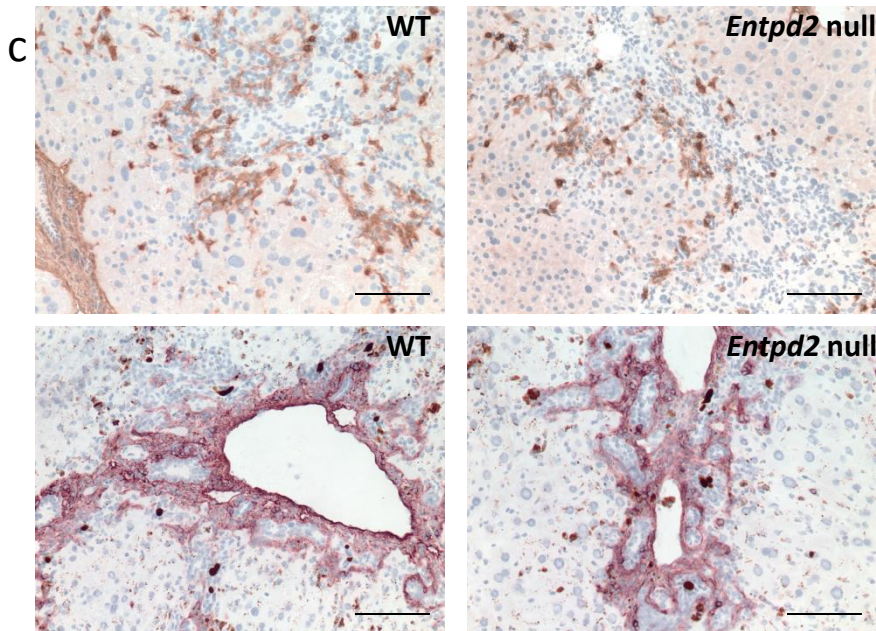
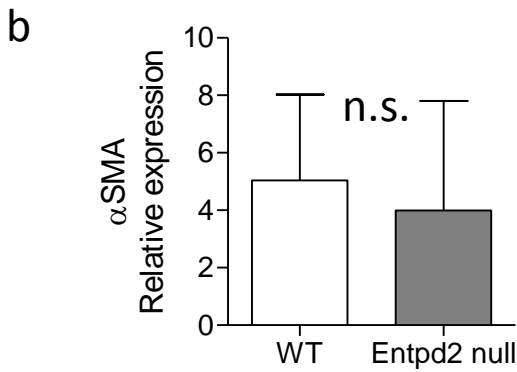
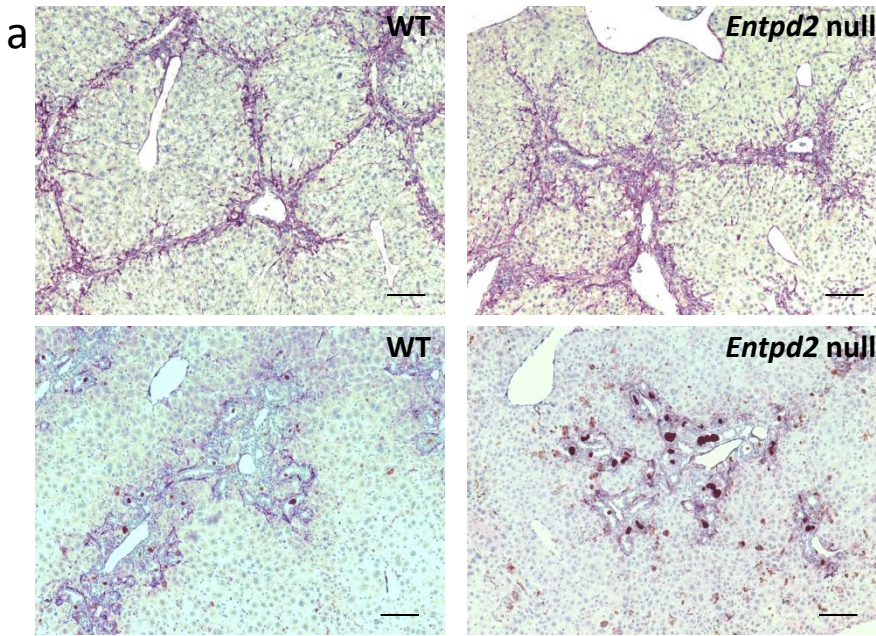


Suppl. Fig. 1 Ductular reaction in WT and *Entpd2* null fibrotic livers

a Immunohistochemical staining of Ck19 as a marker of bile duct epithelium and oval cells after 6 weeks of CCl₄ treatment (upper row) and after 3 weeks of DDC feeding (lower row). Graphs show quantification as Ck19 positive cells per high power field. **b** Ki67 expression in DDC treated livers. Arrows point to DDC aggregates which need to be distinguished from positively stained cells. Graph shows quantification of Ki67 positive cells per high power field. Scale bars show 100 μ m.



Suppl. Fig. 2 Similar expression of myofibroblast markers in WT and Entpd2 null fibrotic livers

a Immunohistochemical staining of α -smooth muscle actin (α SMA) after 6 weeks of CCl₄ treatment (upper row) and after 3 weeks of DDC feeding (lower row). **b** Quantification of α SMA expression in whole liver tissue by qPCR. Relative expression compared to one control WT liver. **c** Expression of Thy-1, a portal fibroblast marker in CCl₄ treated (upper row) and DDC treated (lower row) livers. Scale bars show 100 μ m.