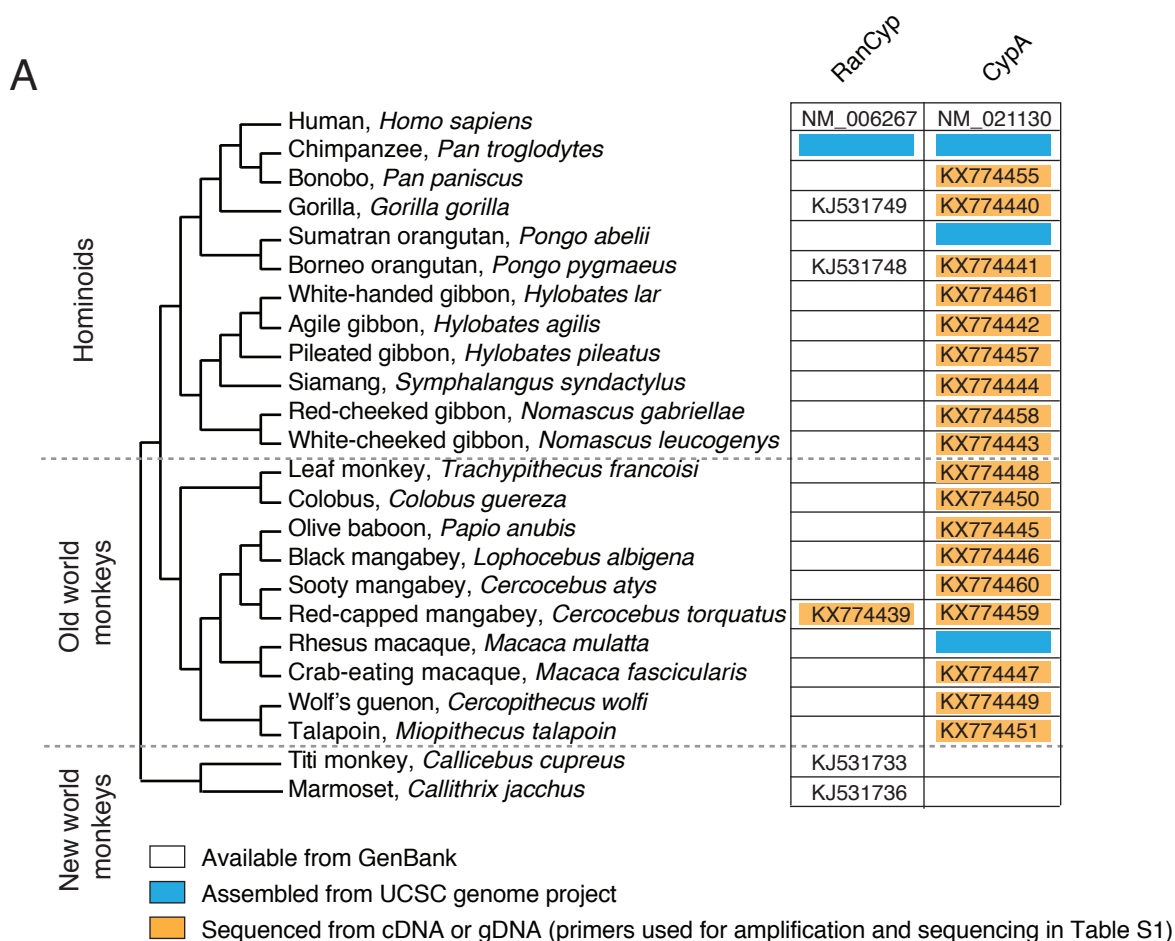


Figure S4



**B Source of DNA and RNA**

Common Name	Species Name	Source	Unique ID	Cell type
Gorilla	<i>Gorilla gorilla</i>	Coriell	PR00280	Fibroblasts
Bonobo	<i>Pan paniscus</i>	Coriell	PR00748	B-Lymphocyte
Borneo orangutan	<i>Pongo pygmaeus</i>	Coriell	PR00650	B-Lymphocyte
Siamang	<i>Hylobates syndactylus</i>	Coriell	PR00722	Fibroblasts
White-cheeked gibbon	<i>Hylobates leucogenys</i>	Coriell	PR01037	Fibroblasts
Agile gibbon	<i>Hylobates agilis</i>	Coriell	PR00773	Fibroblasts
Red-capped mangabey	<i>Cercocebus torquatus</i>	Coriell	PR00485	Fibroblasts
Talapoin	<i>Miopithecus talapoin</i>	Coriell	PR00716	Fibroblasts
Colobus	<i>Colobus guereza</i>	Coriell	PR00980	Fibroblasts
Leaf monkey	<i>Trachypithecus francoisi</i>	Coriell	PR01099	Fibroblasts
Crab-eating macaque	<i>Macaca fascicularis</i>	NEPRC	Mf27-04	B-Lymphocyte
Olive baboon	<i>Papio anubis</i>	Coriell	PR00978	Fibroblasts
Black mangabey	<i>Lophocebus albigena</i>	Coriell	PR01215	Fibroblasts
Wolf's guenon	<i>Cercopithecus wolfei</i>	Coriell	PR01241	Fibroblasts
Marmoset	<i>Callithrix jacchus</i>	Coriell	GM07404	B-Lymphocyte
Titi monkey	<i>Callicebus cupreus</i>	Coriell	PR00793	Fibroblasts
White-handed gibbon	<i>Hylobates lar</i>	Coriell	PR01131	Fibroblasts
Red-cheeked gibbon	<i>Nomascus gabriellae</i>	Coriell	PR00381	Fibroblasts
Pileated gibbon	<i>Hylobates pileatus</i>	Coriell	PR00243	Fibroblasts
Sooty mangabey	<i>Cercocebus atys</i>	NEPRC	FJY	B-Lymphocyte

NEPRC = New England Primate Research Center