

## Cabozantinib Affects Osteosarcoma Growth Through A Direct Effect On Tumor Cells And Modifications In Bone Microenvironment

Fioramonti M<sup>1\*</sup>, Fausti V<sup>2,3</sup>, Pantano F<sup>1</sup>, Iuliani M<sup>1</sup>, Ribelli G<sup>1</sup>, Lotti F<sup>4</sup>, Pignochino Y<sup>5</sup>, Grignani G<sup>5</sup>, Santini D<sup>1</sup>, Tonini G<sup>1</sup>, Vincenzi B<sup>1</sup>

1: Medical Oncology, Campus Bio-Medico University of Rome, Rome, Italy

2: Medical Oncology, University of Ferrara, Ferrara, Italy

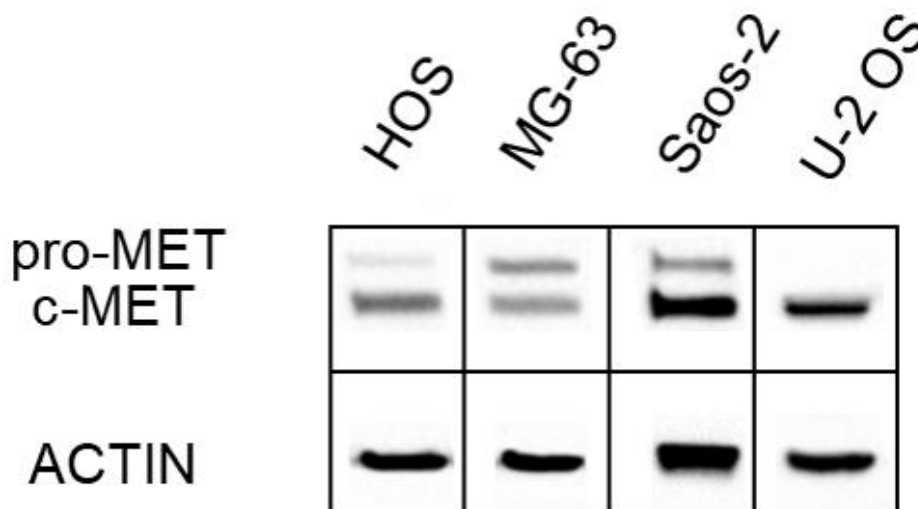
3: Osteoncology and Rare Tumors Center, Istituto Scientifico Romagnolo per lo Studio e la Cura dei Tumori (IRST) IRCCS, Meldola (FC), Italy

4: Orthopaedics and Trauma Surgery, Campus Bio-Medico University of Rome, Rome, Italy

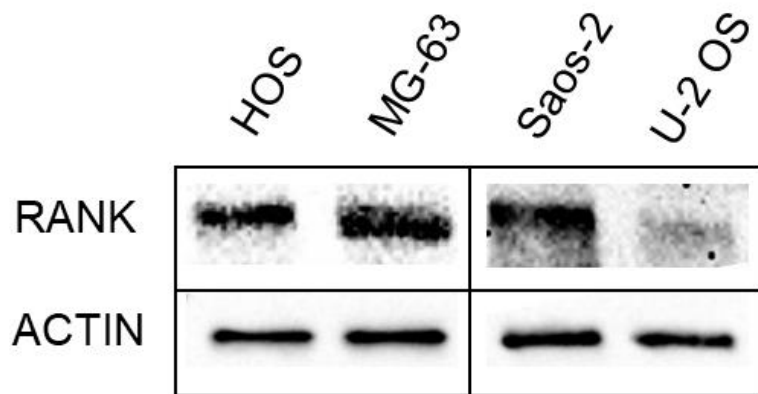
5: Sarcoma Unit, Division of Medical Oncology, Candiolo Cancer Institute-FPO, IRCCS, Candiolo (TO), Italy

\*corresponding author: Medical Oncology, Campus Bio-Medico University of Rome, via Alvaro del Portillo 200, 00128, Rome, Italy Tel: +39 06225419117 - Fax: +39 06225411933 – email: [ma.fioramonti@gmail.com](mailto:ma.fioramonti@gmail.com)

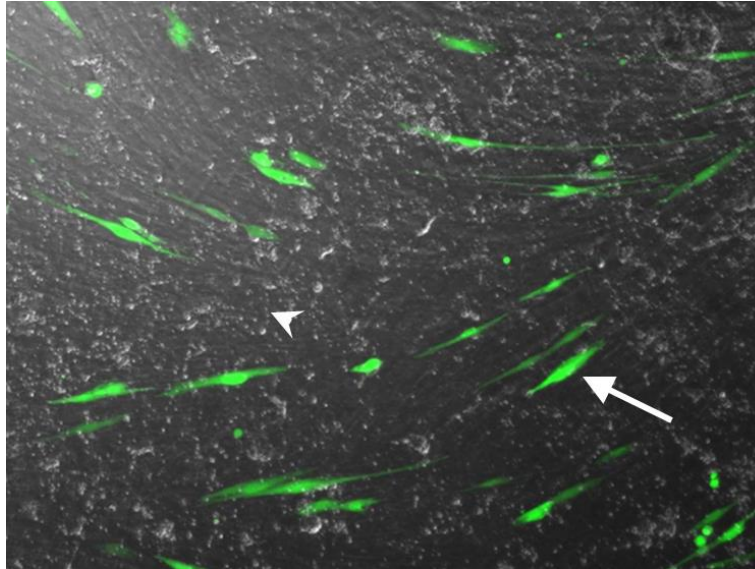
### SUPPLEMENTARY DATA



**Figure 1 suppl. data:** Western blot analysis of the expression of c-MET receptor in HOS, MG-63, Saos-2 and U-2 OS cells. Inactive form of the receptor, named pro-MET (~175 kDa), is not detectable in U-2 OS cell line only. The active c-MET receptor levels (~140 kDa) are similar in each tested OS cell line, compared to actin levels. Full length blots are presented in supplementary figure 4 (a-d) and are the same used for figure 4.

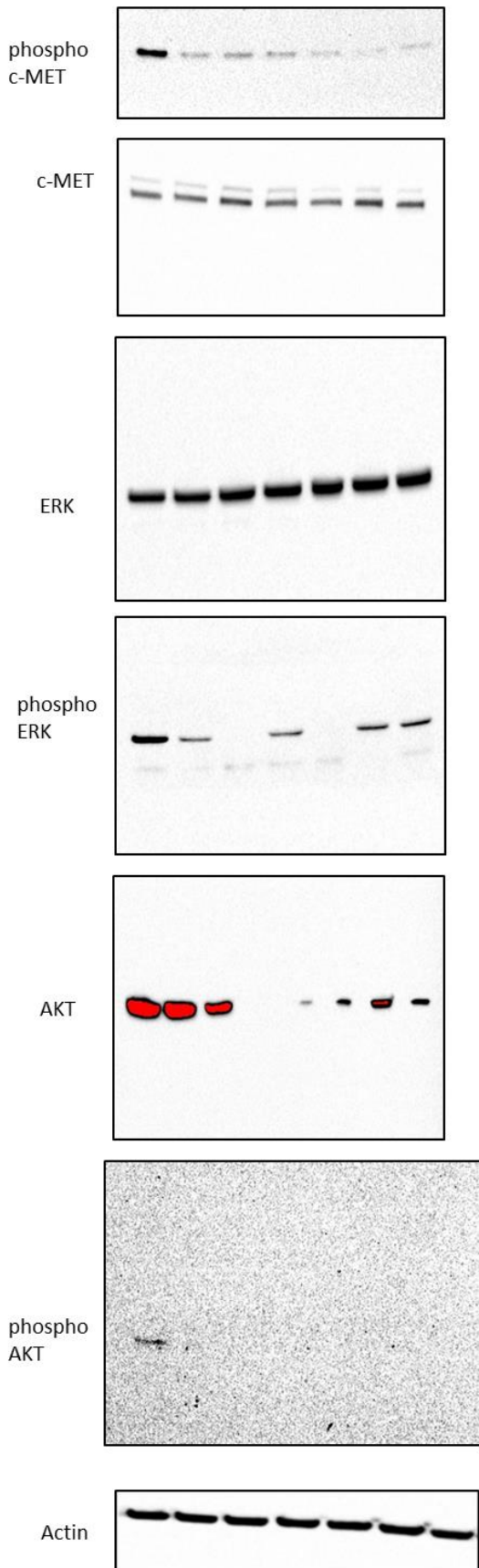


**Figure 2 suppl. data:** Evaluation of the expression of RANK in OS cells; HOS, MG-63 and Saos-2 cells are positive to RANK expression, whereas U-2 OS cells do not express the receptor. Full length blots are showed in supplementary figure 4 e.

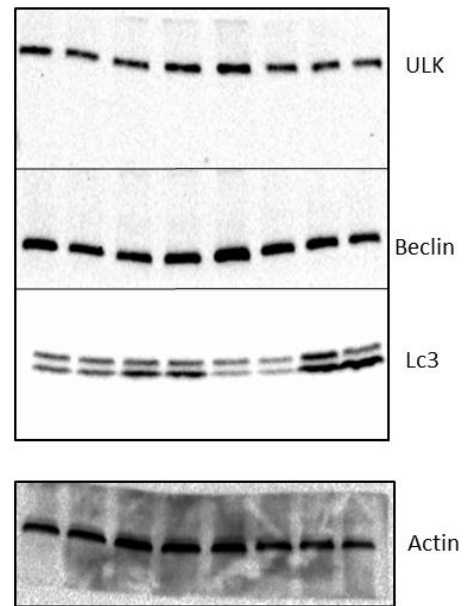


**Figure 3 suppl. data:** representative image of co-culture between OS cells and OBLs. White arrow indicates GFP+ OS cells; arrow-head indicates OBLs cells with their typical calcium deposits.

a)

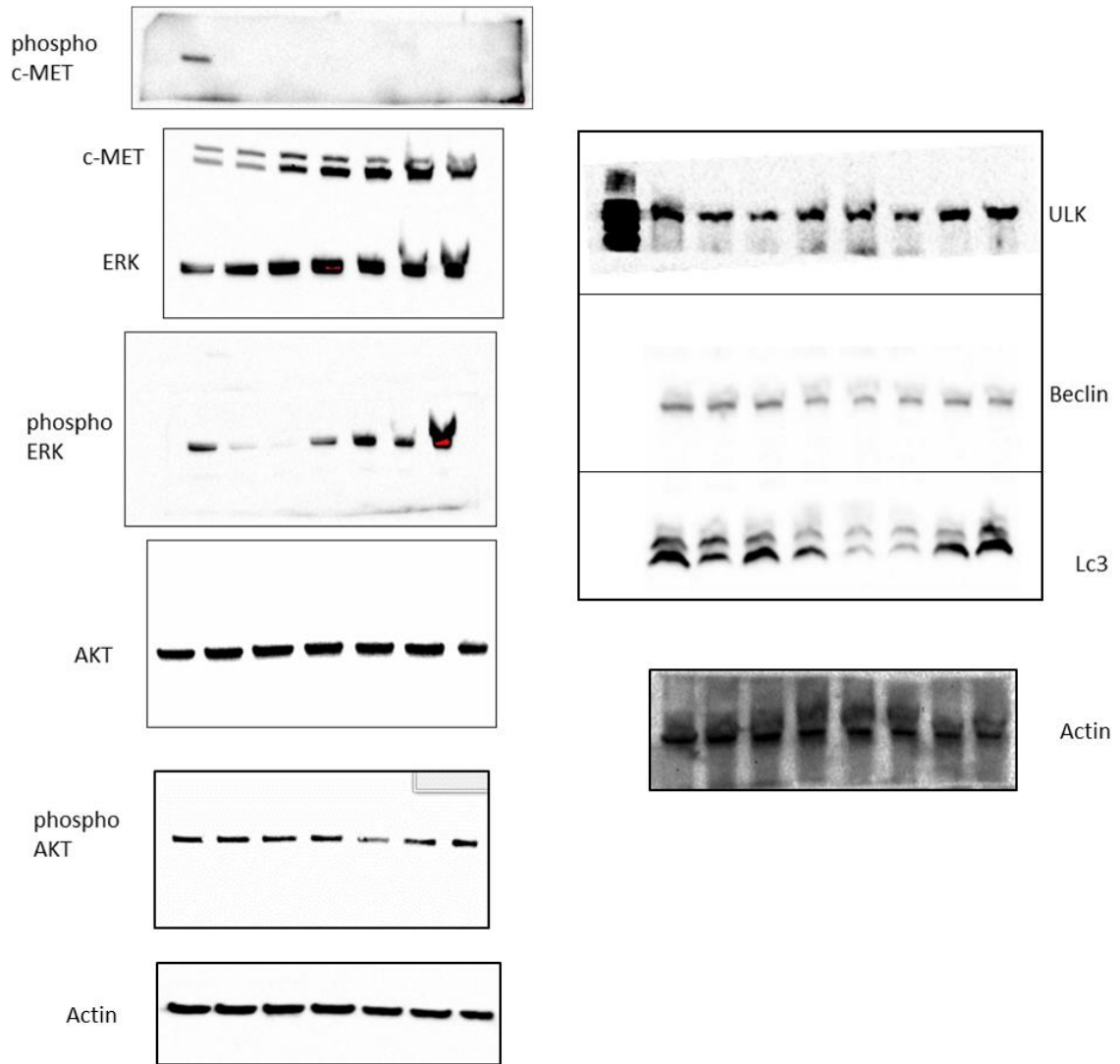


HOS WESTERN BLOTS



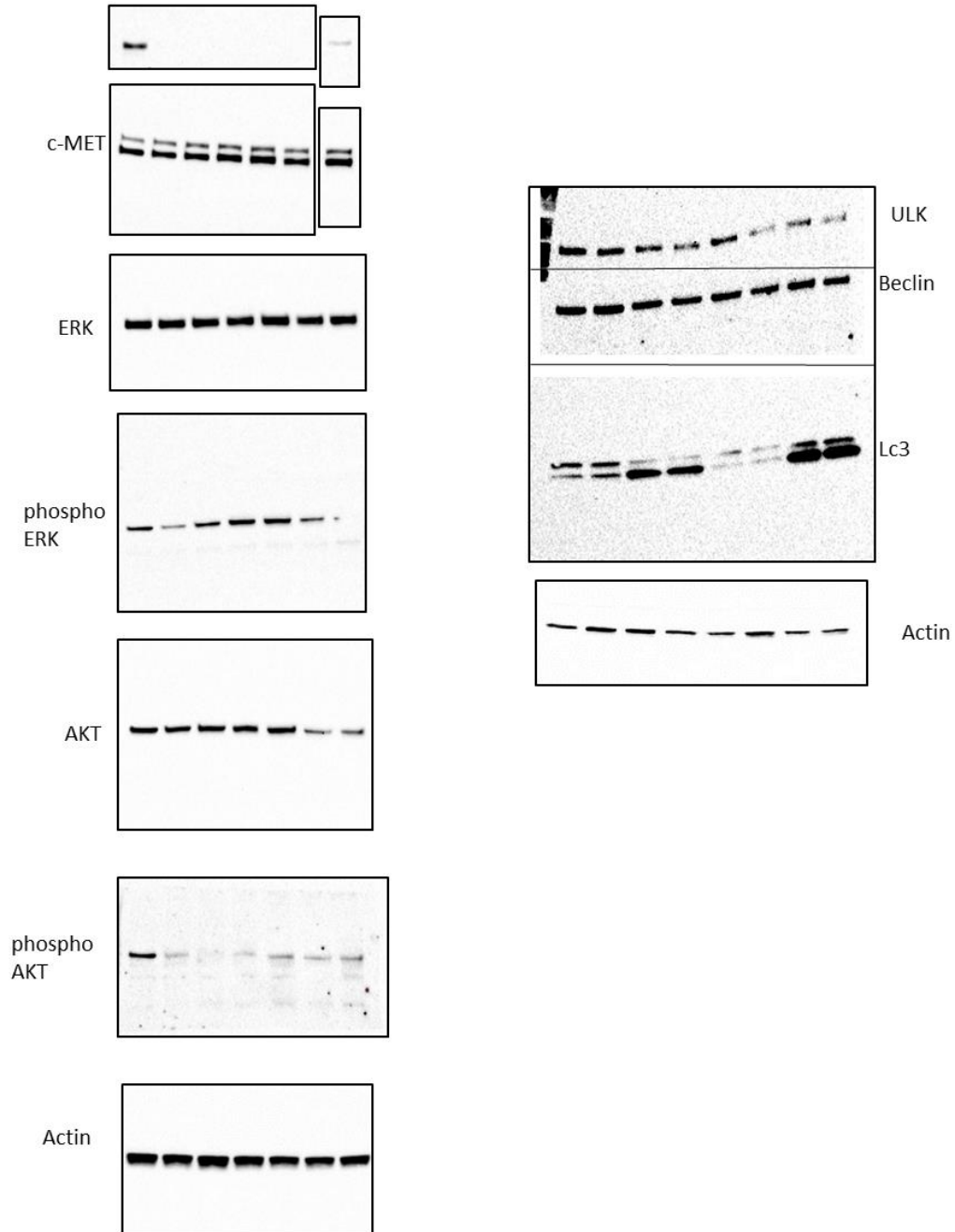
b)

MG-63 WESTERN BLOTS



c)

Saos-2 WESTERN BLOTS



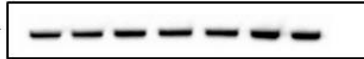
d)

U-2 OS WESTERN BLOTS

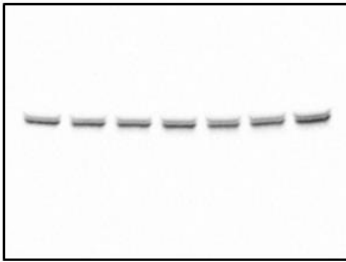
phospho  
c-MET



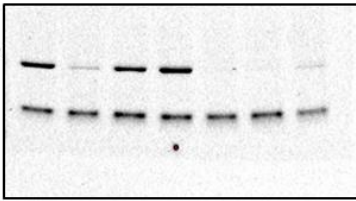
c-MET



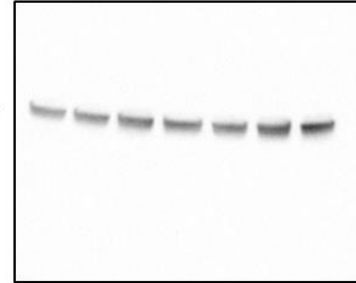
ERK



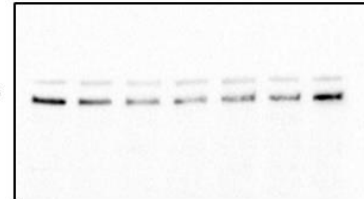
phospho  
ERK



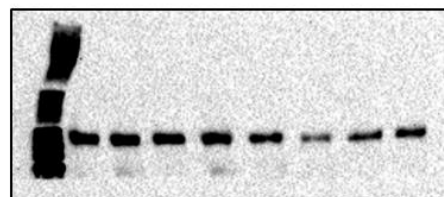
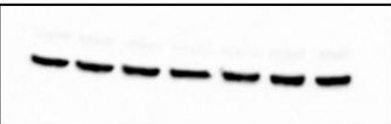
AKT



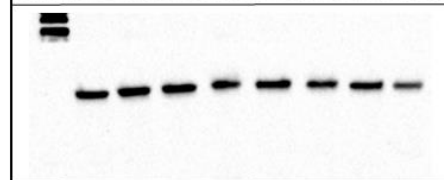
phospho  
AKT



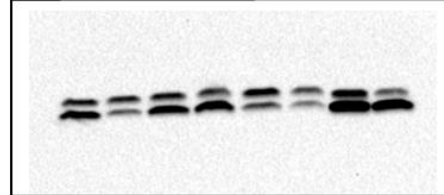
Actin



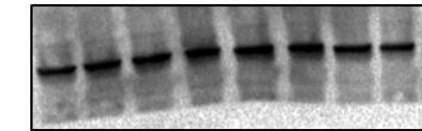
ULK



Beclin

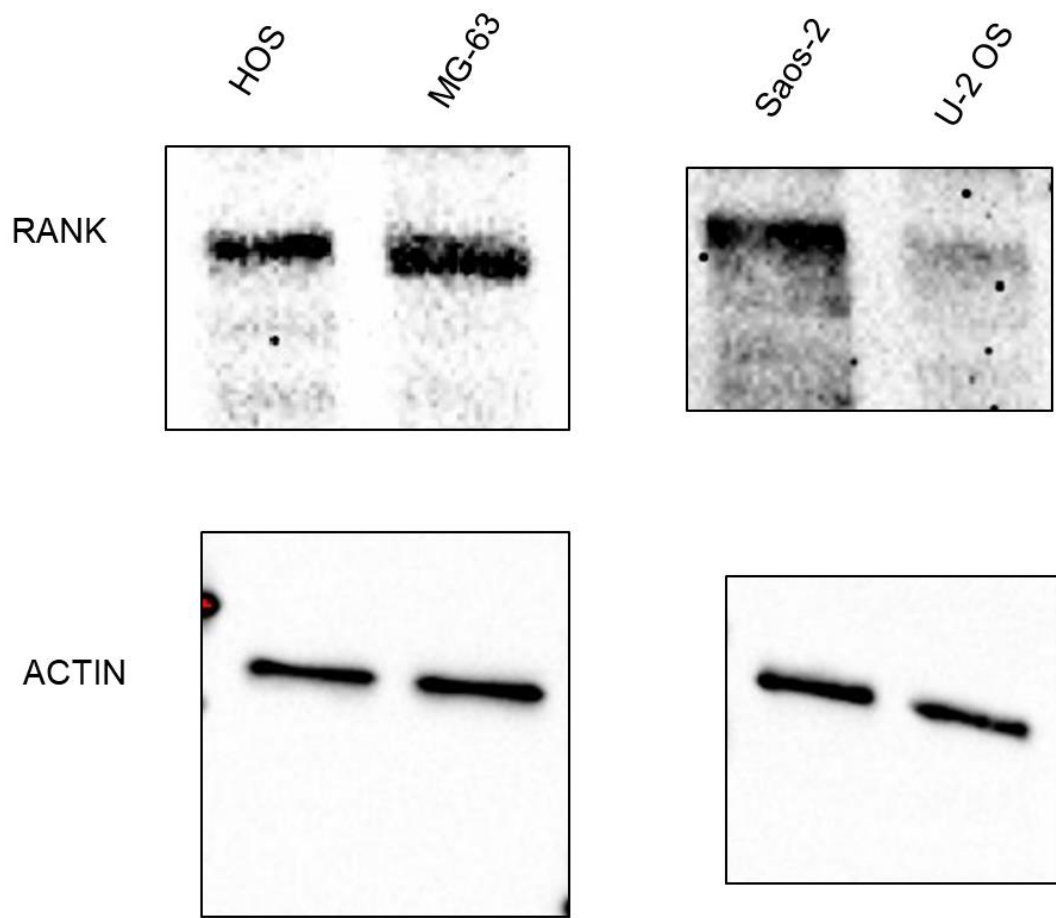


Lc3



Actin

e)



**Figure 4 suppl. data:** full length blots of figure 4/supplementary figure 1 (a, b, c, d) and supplementary figure 2 (e).