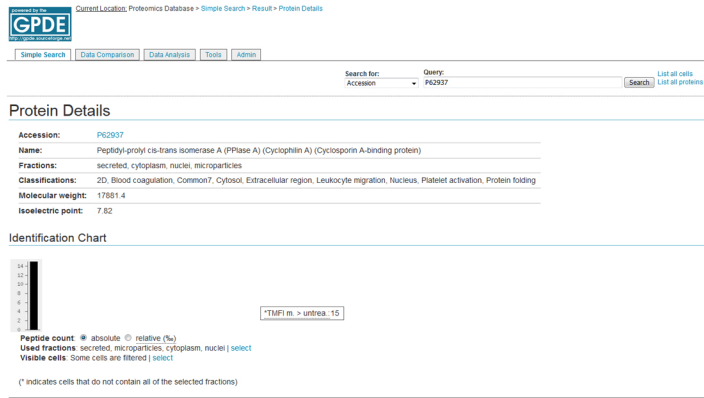
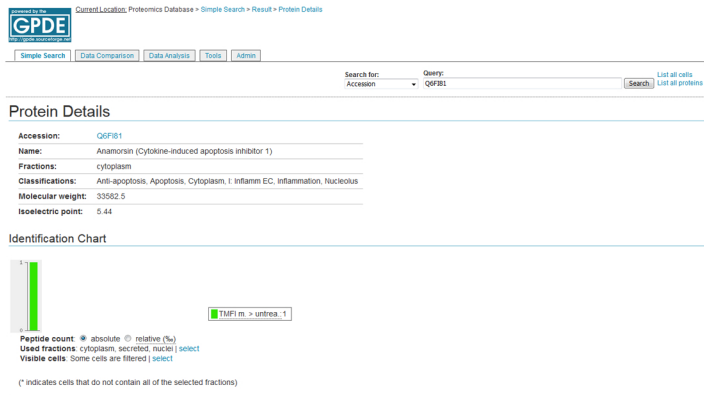


Supplementary figure 3: Correlation of proteins (P62937, P61962, Q6FI81, P21266) identified by nearest shrunken centroid and CPL/MUW protein database, including 255 cell cultures, cell states and tissue, leading to a high protein similarity to the resistant melanoma cell line TMF1.



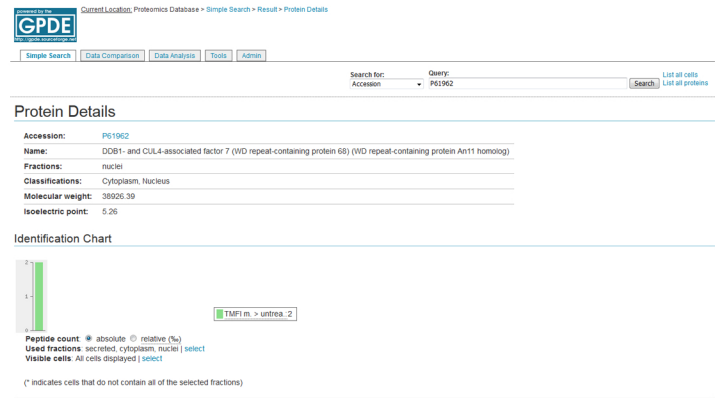
Identification Details

This protein was identified in **218 / 255** cells (Show remaining cells)



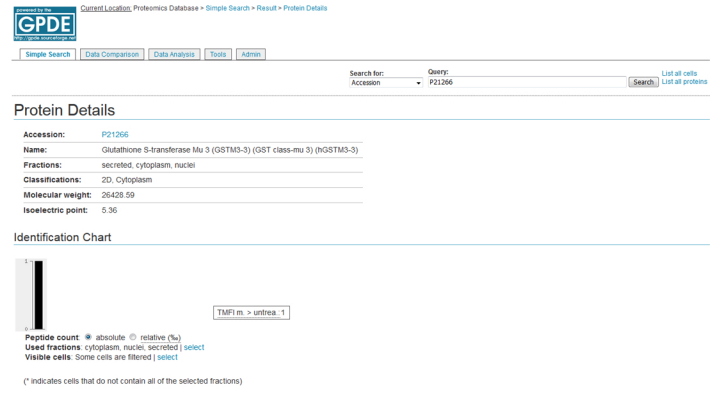
Identification Details

This protein was identified in **35 / 255** cells (Show remaining cells)



Identification Details

This protein was identified in **1 / 255** cell (Show remaining cells)



Identification Details

This protein was identified in **140 / 255** cells (Show remaining cells)