

Supplementary Figure 1

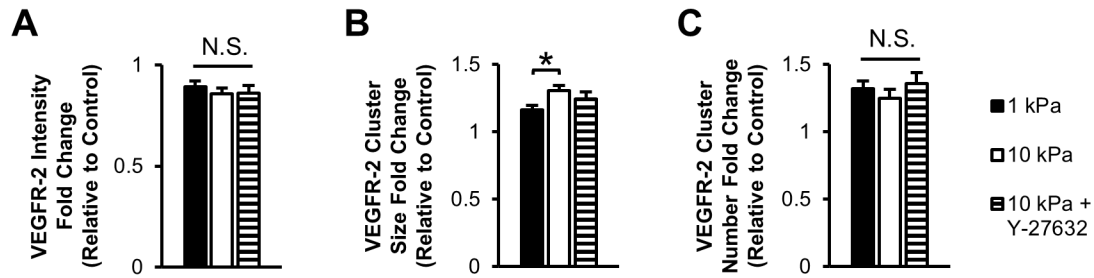


Figure S1. Matrix stiffness elevates VEGFR-2 clustering following VEGF stimulation. (A-C) The fold change (VEGF/control) of VEGFR-2 intensity (A), cluster size (B), and cluster number (C) following 15 min VEGF treatment for sub-confluent endothelial cells cultured on 1 kPa, 10 kPa, or 10 kPa gels with Y-27632 pretreatment. Plots are mean \pm SE. N = 5 independent experiments, at least 30 cells per condition. * $p < 0.05$ from ANOVA with post hoc Tukey's test. N.S. not significant.

Supplementary Figure 2

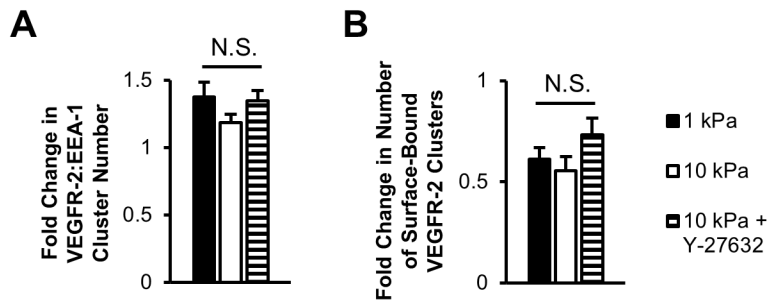


Figure S2. Matrix stiffness does not influence VEGF-stimulated fold change in VEGFR-2 internalization.

(A) The fold change in the number of VEGFR-2 and EEA-1 colocalization events (VEGF/control) of cells cultured on 1 kPa, 10 kPa, or 10 kPa gels treated with Y-27632 following 15 min VEGF stimulation. (B)

Fold change in the number of VEGFR-2 clusters on the cell surface under the same conditions. Plots are mean \pm SE. N = 3 independent experiments, at least 30 cells per condition. N.S. not significant.