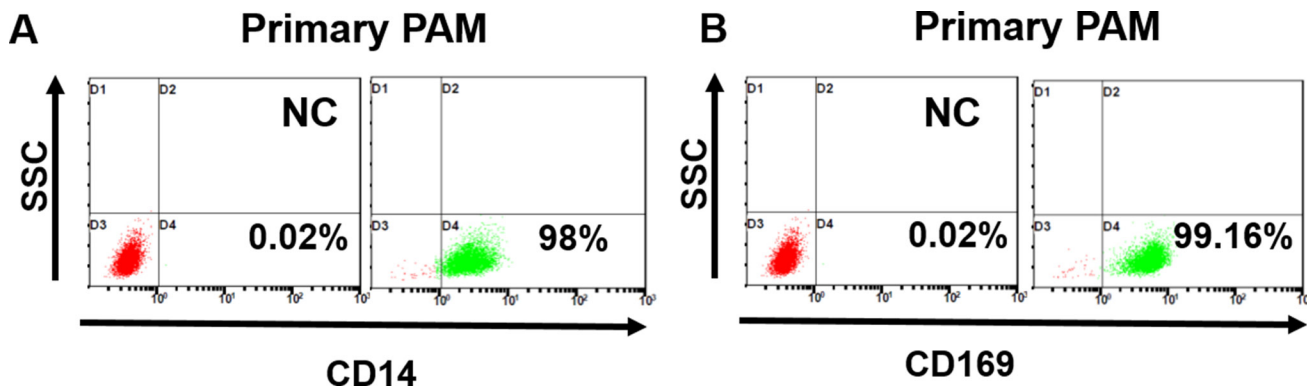
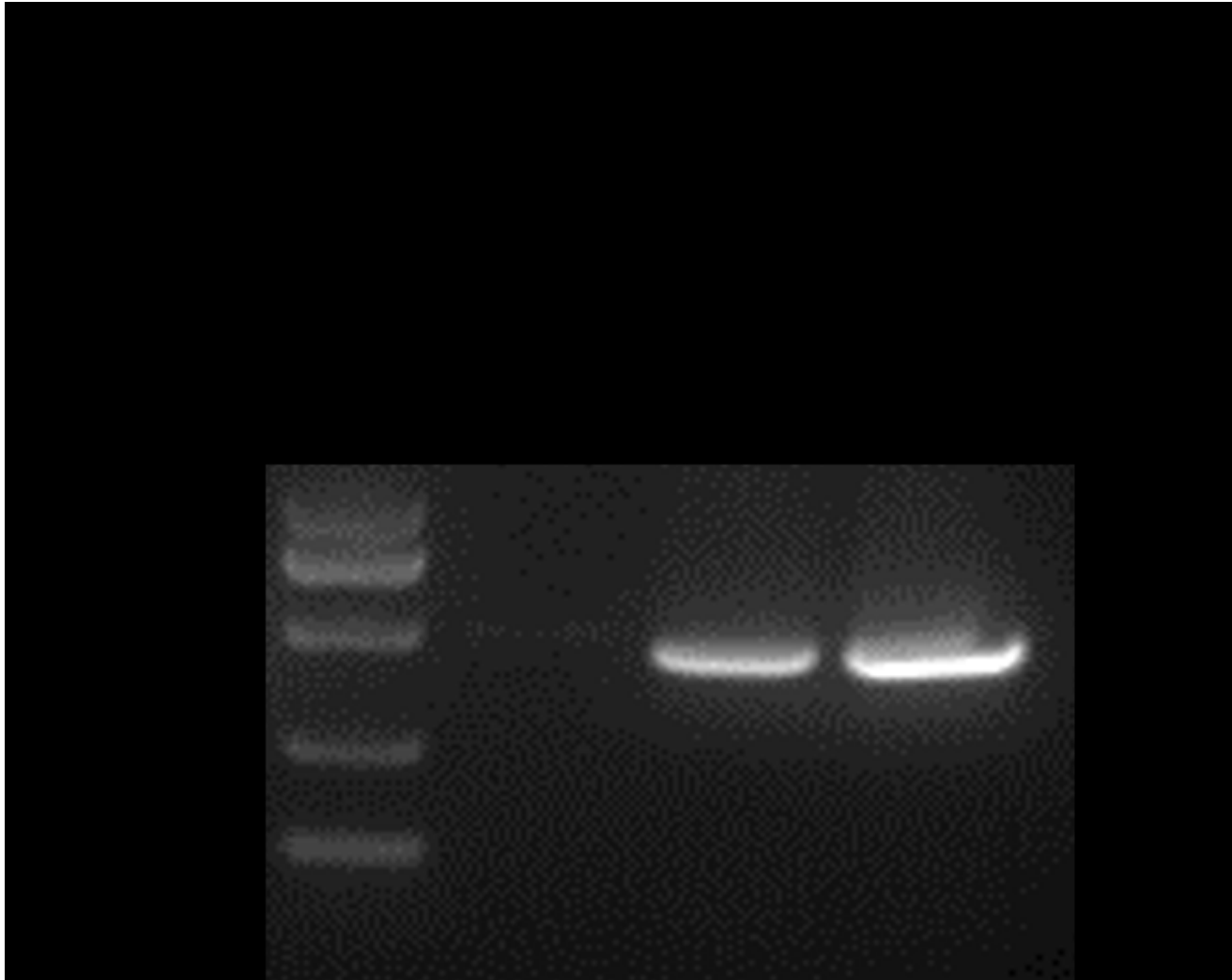


Porcine alveolar macrophage CD163 abundance is a pivotal switch for porcine reproductive and respiratory syndrome virus infection

SUPPLEMENTARY MATERIALS



Supplementary Figure 1: Identification of primary PAM purification with indicated markers.



Supplementary Figure 2: Infection of iPAMs by NADC30-like PRRSV strain.