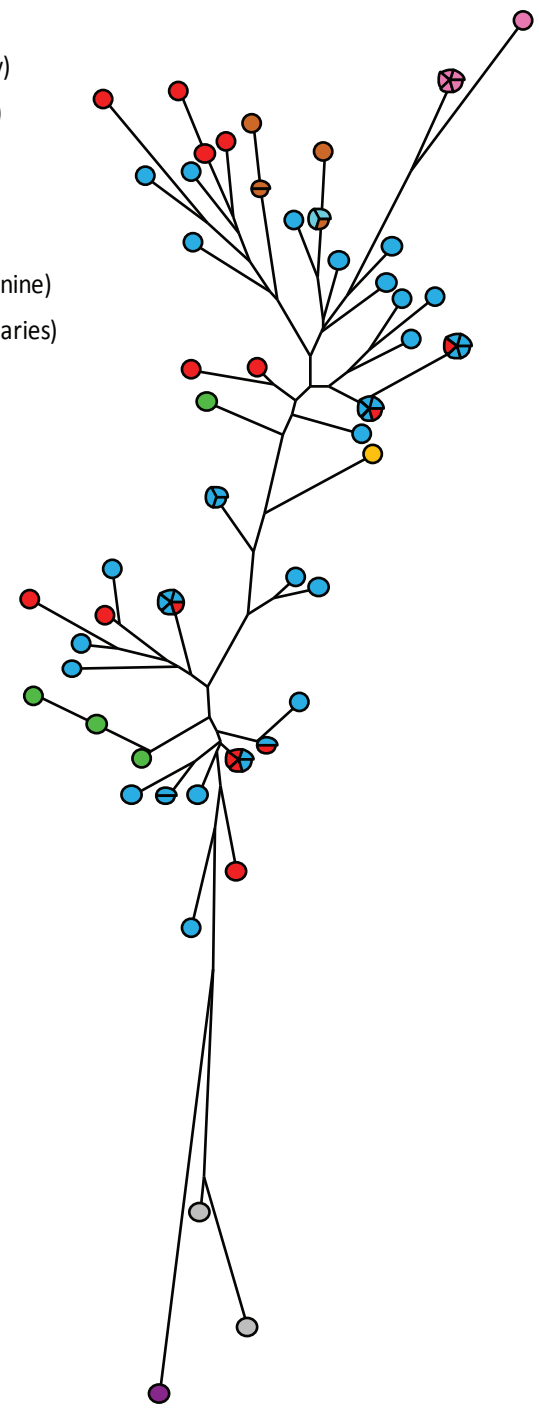


- German cattle isolates (our study)
- French cattle isolates (our study)
- Other French cattle isolates
- str. Norway variant2
- French horse isolates
- American strains (human and canine)
- *Anaplasma marginale* (str. St. Maries)
- French roe deer isolates
- French dog isolates



Concatenation of *typA*, *ctrA*, *msp4* and *poIA*