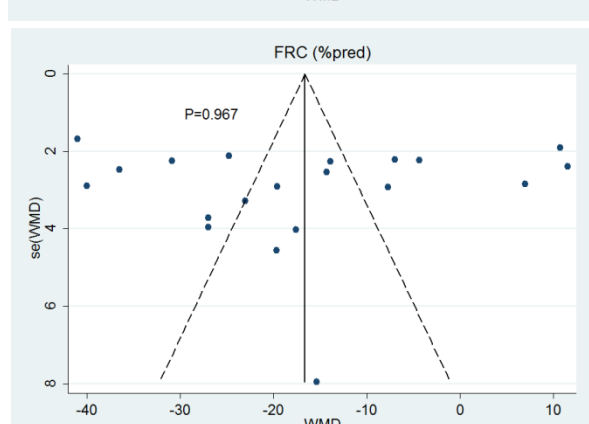
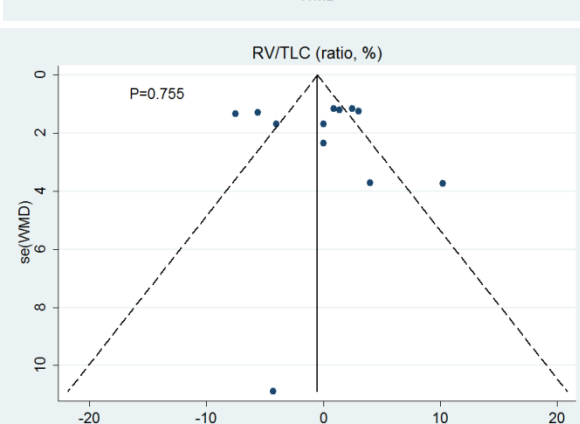
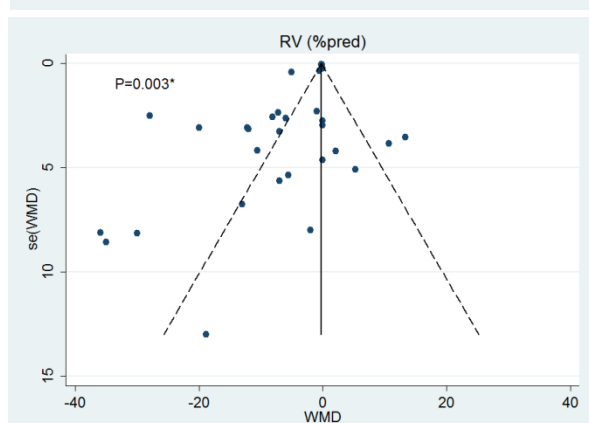
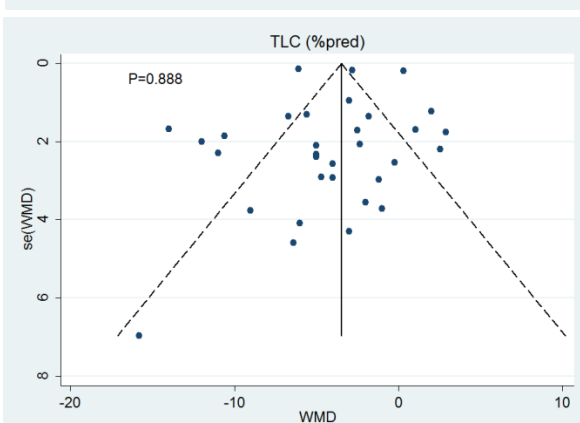
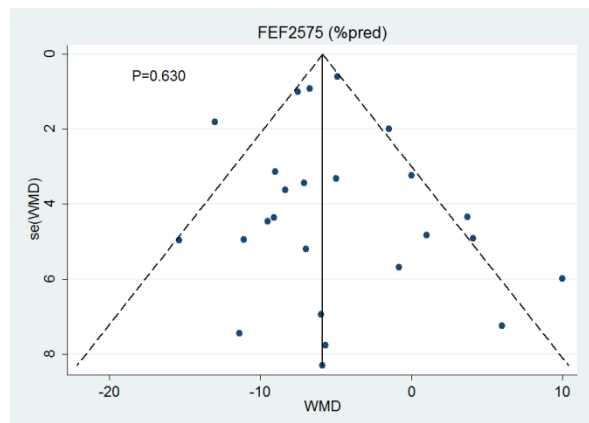
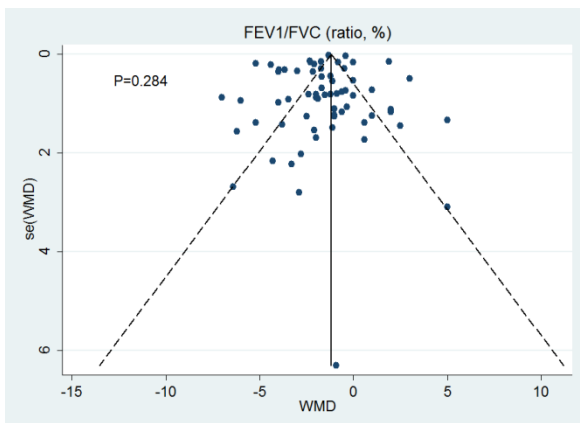
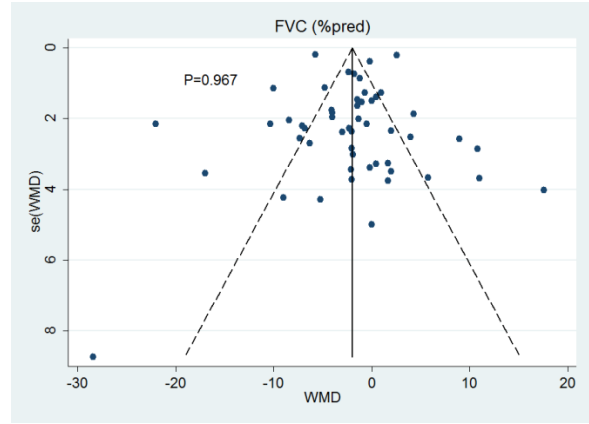
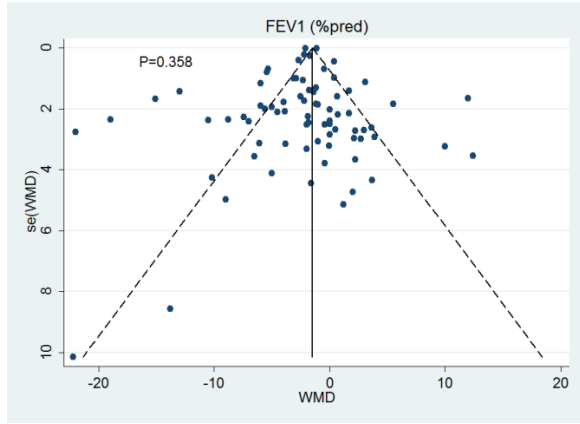
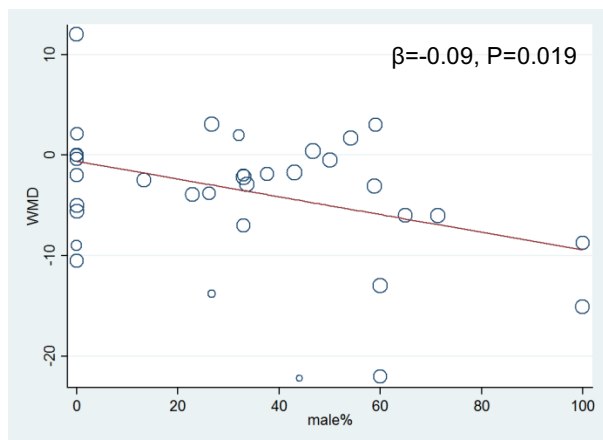


Supplemental Figure E8 – Funnel plots and Egger's test for small-study effects

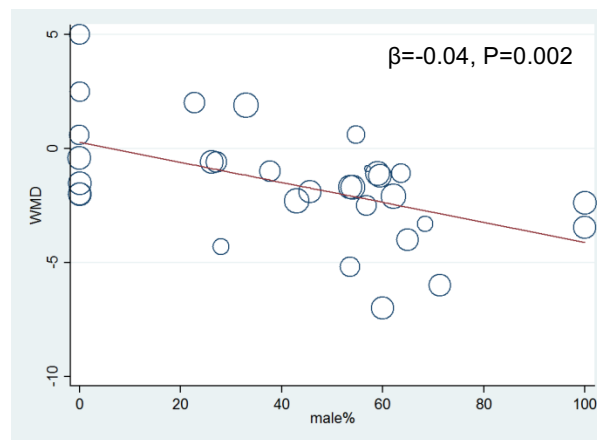


Supplemental Figure E9 – Effect modification of obesity on lung function by age and gender

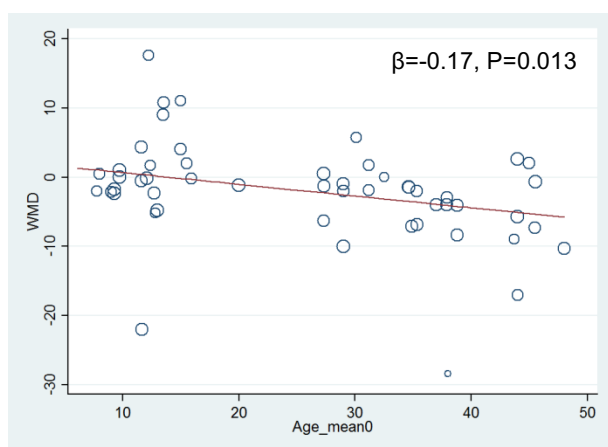
A. FEV₁ (%pred) by gender in adults



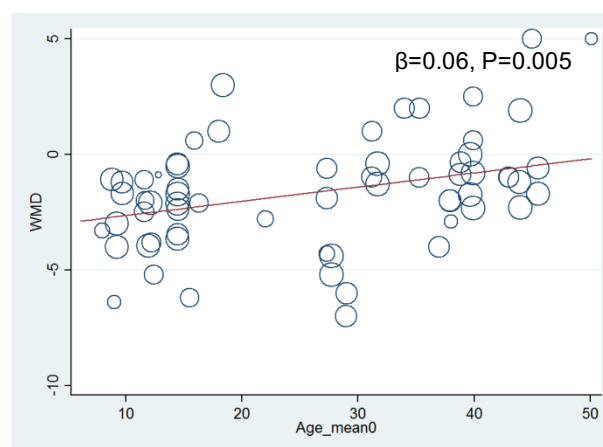
B. FEV₁/FVC (%) by gender in asthmatics



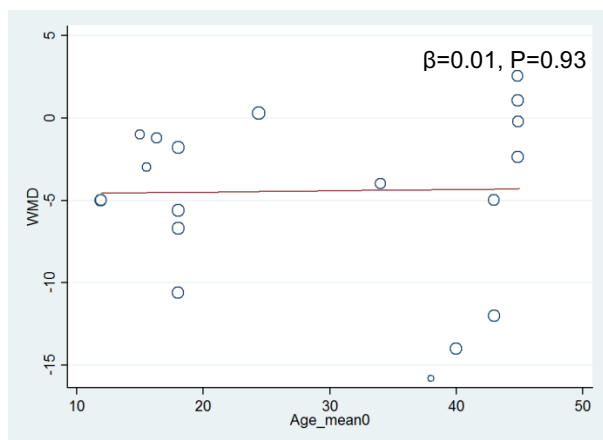
C. FVC (%pred) by age in children and adults



D. FEV₁/FVC (%) by age in children and adults



E. TLC (%pred) by age in non-asthmatics



ONLINE SUPPLEMENTARY MATERIAL

Overweight, obesity, and lung function in children and adults – a meta-analysis

Erick Forno^{1*}, Yueh-Ying Han^{1*}, James Mullen², Juan C. Celedón¹

*¹Division of Pulmonary Medicine, Allergy and Immunology, Department of Pediatrics, Children's Hospital of Pittsburgh of UPMC, University of Pittsburgh, Pittsburgh, PA; ²College of Science, University of Notre Dame, Notre Dame, IN. *These authors contributed equally to the manuscript.*

*These authors contributed equally to this work.

Corresponding author: Erick Forno, M.D., M.P.H.
Division of Pulmonary Medicine, Allergy and Immunology
Children's Hospital of Pittsburgh of UPMC
4401 Penn Avenue, Pittsburgh, PA 15224
Phone: 412.692.8429; Fax 412.692.7636
Email: erick.forno@chp.edu

Funding: Dr. Forno's contribution was supported by NIH grant HL125666 and by a grant from Children's Hospital of Pittsburgh of UPMC. Dr. Celedón's contribution was supported by NIH grants HL079966, HL117191 and HL119952, and by an endowment from the Heinz Foundation.

Supplementary Table E1 – Spirometric values by age, asthma, and obesity status

Adults	Control Normal weight	Control Overweight/obese	Asthma Normal weight	Asthma Overweight/obese
FEV ₁ (%pred)	105.03 ± 6.64	97.34 ± 6.30	85.36 ± 16.04	82.62 ± 15.61
FVC (%pred)	106.27 ± 9.12	96.83 ± 4.34	97.47 ± 7.44	94.07 ± 8.44
FEV ₁ /FVC (%)	83.98 ± 4.60	83.26 ± 3.64	73.88 ± 7.26	72.86 ± 7.57

Children	Control Normal weight	Control Overweight/obese	Asthma Normal weight	Asthma Overweight/obese
FEV ₁ (%pred)	100.23 ± 5.16	99.35 ± 6.97	91.07 ± 4.77	91.94 ± 4.64
FVC (%pred)	102.04 ± 3.43	105.04 ± 12.13	99.71 ± 4.23	100.25 ± 5.42
FEV ₁ /FVC (%)	92.27 ± 3.71	89.02 ± 4.68	85.20 ± 6.34	83.32 ± 5.79

Tables show the mean (±SD) reported FEV₁, FVC, and FEV₁/FVC for all studies included in the corresponding analyses.

SUPPLEMENTAL FIGURES – TITLES AND LEGENDS

Supplemental Figure E1 – Obesity and FEV₁ (%pred) by asthma status.

WMD: Weighted mean difference. OV=overweight, OB=obese, OVOB=overweight or obese.

Supplemental Figure E2 – Obesity and FEV₁ (liters) by age group.

WMD: Weighted mean difference. OV=overweight, OB=obese, OVOB=overweight or obese.

Supplemental Figure E3 – Obesity and FVC (%pred) by weight group.

WMD: Weighted mean difference. OV=overweight, OB=obese, OVOB=overweight or obese.

Supplemental Figure E4 – Obesity and FEF₂₅₋₇₅ (%pred) by age group.

WMD: Weighted mean difference. OV=overweight, OB=obese, OVOB=overweight or obese.

Supplemental Figure E5 – Obesity and TLC (%pred) by asthma status.

WMD: Weighted mean difference. OV=overweight, OB=obese, OVOB=overweight or obese.

Supplemental Figure E6 – Obesity and TLC (%pred) by weight group.

WMD: Weighted mean difference. OV=overweight, OB=obese, OVOB=overweight or obese.

Supplemental Figure E7 – Obesity and FRC (%pred) by weight group.

WMD: Weighted mean difference. OV=overweight, OB=obese.

Supplemental Figure E8 – Funnel plots and Egger's test for small-study effects.

Supplemental Figure E9 – Effect modification of obesity on lung function by age and gender.