

Supporting Information

Solubility of the proteinogenic α -amino acids in water, ethanol and ethanol-water mixtures

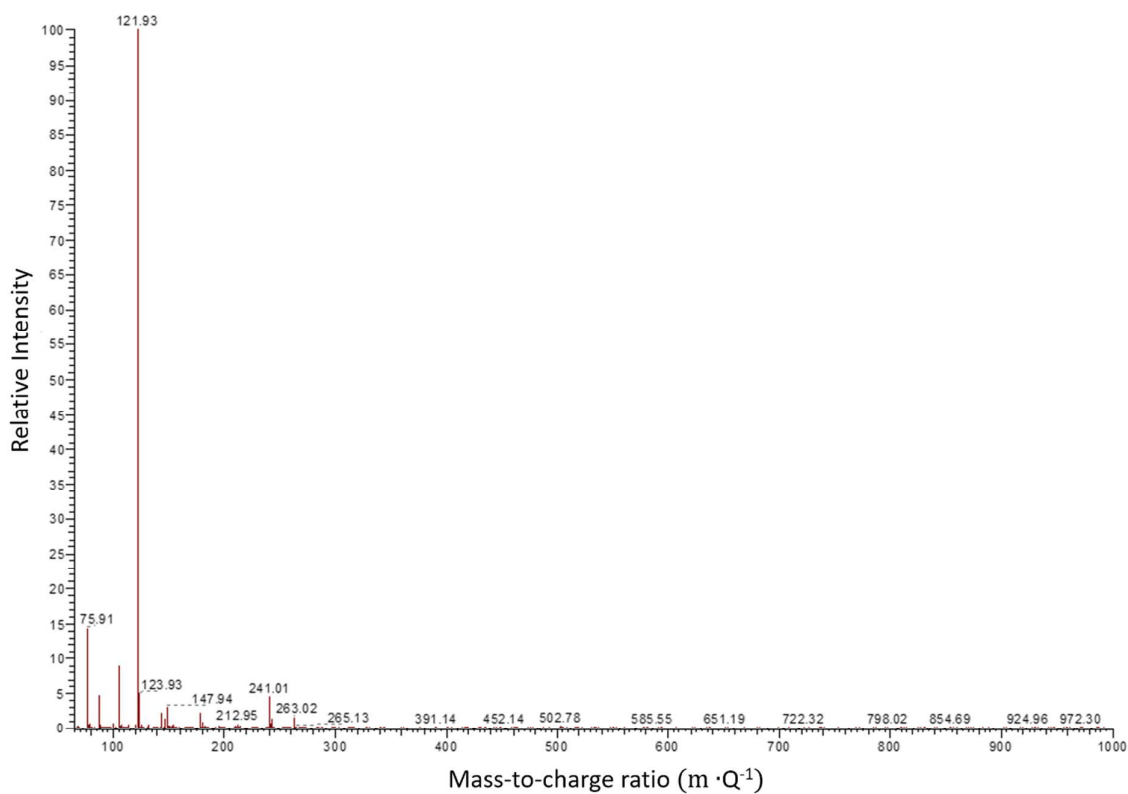
Nathan A. Bowden* (1, 2), Johan P.M. Sanders (1, 3), Marieke E. Bruins (3)

1) Biobased Chemistry and Technology Group, ASFG, Bornse Weilanden 9, 6708WG Wageningen, Wageningen University and Research, The Netherlands

2) School of Life Sciences, Lovensdijkstraat 61-63, 4818AJ Breda, Avans University of Applied Science, The Netherlands

3) Wageningen Food and Biobased Research, Bornse Weilanden 9, 6107WG Wageningen University and Research, The Netherlands

* Nathan.bowden@wur.nl



This figure shows the mass spectrophotometer results from the L-cysteine trial. The peak at 121.93 indicates L-cysteine. The relative intensity at 121.93 is close to 100 and is the largest constituent that was detected by the mass spectrometer. The peak at 241.01 indicates L-cystine. The relative intensity of L-cystine is approximately 4.5% and is the fifth largest relative intensity detected by the mass spectrometer. These results show that there has been negligible conversion of L-cysteine to L-cystine during the trial.