

Figure S1. Chicken lipoprotein lipase (LPL) is associated with capillaries in chicken tissues. After perfusing a 9-day-old chicken with PBS, the heart, gizzard, and cerebellum were harvested and embedded in OCT. Frozen sections were cut and stained with a rabbit antibody against von Willebrand factor (vWF) followed by an Alexa Fluor 488-conjugated donkey anti-rabbit IgG (*green*) and an Alexa Fluor 555-conjugated goat IgG against chicken LPL IgG (*red*). DNA was stained with DAPI (*blue*). Scale bars, 50 μm .

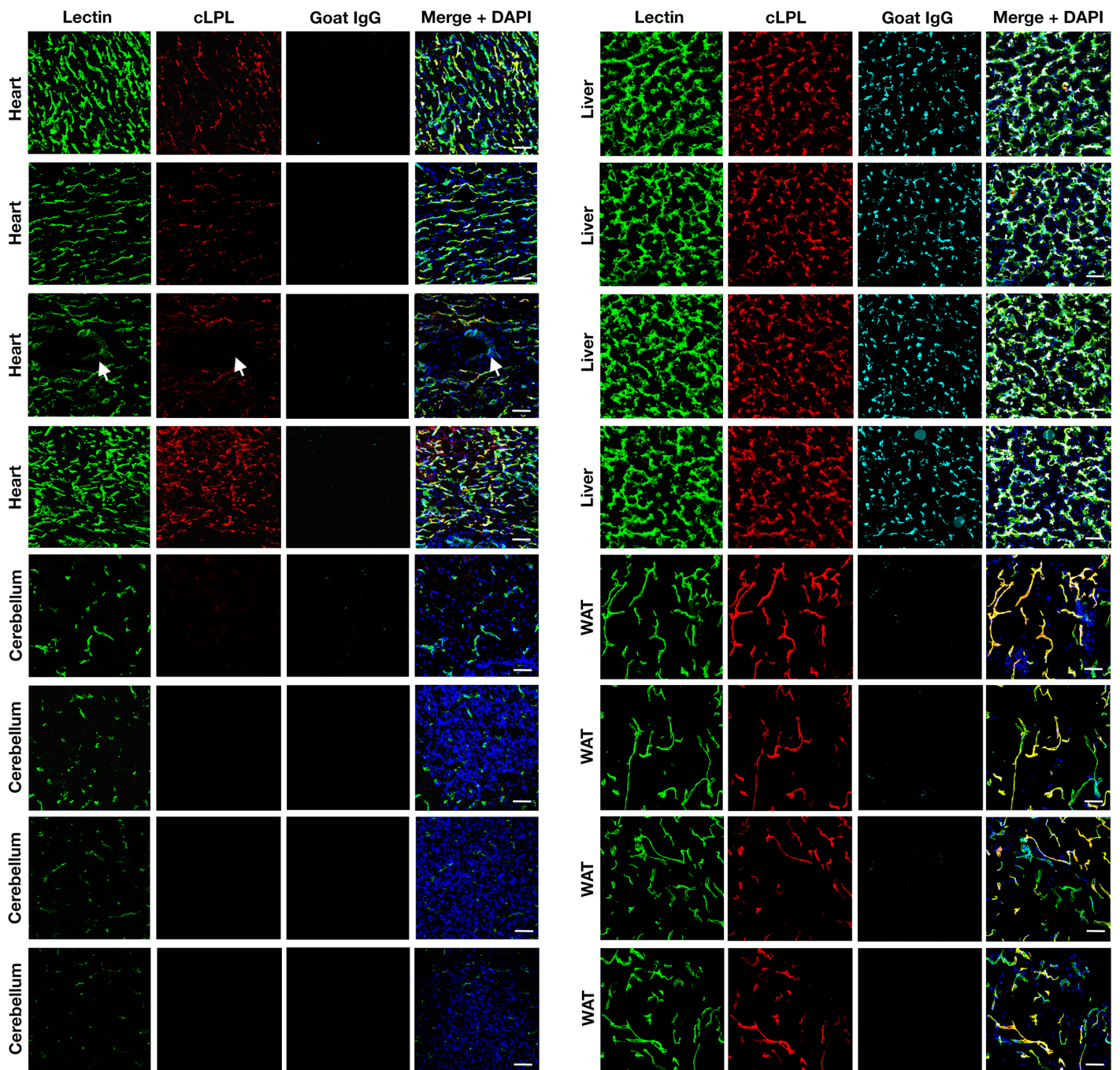


Figure S2. Chicken lipoprotein lipase (LPL) is associated with capillaries. A 9-day-old chicken was given an intravenous injection of 0.7 mg of Alexa Fluor 555-labeled immunopurified goat IgG against chicken LPL (*red*), 0.5 mg of fluorescein-labeled *Lens culinaris* agglutinin (Lectin, *green*), and 0.7 mg of Alexa Fluor 647-labeled nonimmune goat IgG (*cyan*) in a total volume of 193 μ l. After 4 min, the chicken was perfused with 50 ml of PBS followed by 30 ml of 3% paraformaldehyde (PFA) in PBS. Liver, white adipose tissue (WAT), heart, and cerebellum were harvested, and frozen sections were analyzed by fluorescence microscopy. The anti-LPL antibodies bound to capillaries but not to larger blood vessels (arrows); the nonimmune goat IgG did not bind to blood vessels of heart, WAT, or cerebellum (indicating an effective perfusion) but did bind to macrophages of the liver. DNA was stained with DAPI (*blue*). Scale bar, 50 μ m.

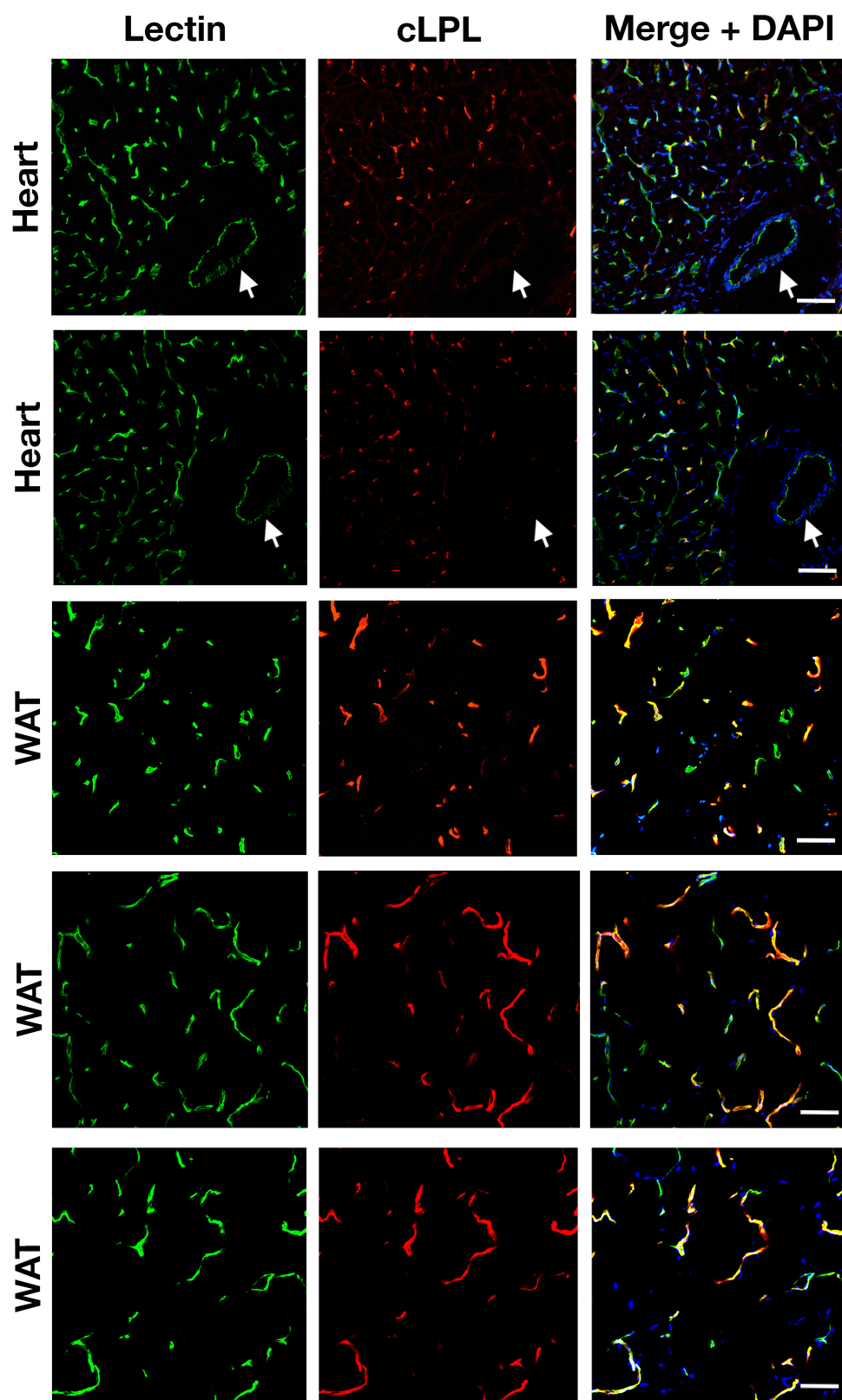


Figure S3. Chicken lipoprotein lipase (LPL) is associated with capillaries. A 9-day-old chicken was given an intravenous injection of 1 mg of an Alexa Fluor 555-labeled immunopurified goat IgG against chicken LPL (*red*) and 0.5 mg of fluorescein-labeled *Lens culinaris* agglutinin (Lectin, *green*) in a total volume of 150 μ l. After 4 min, the chicken was perfused with 50 ml of PBS followed by 30 ml of 3% paraformaldehyde (PFA) in PBS. Heart and white adipose tissue were harvested, and tissue sections were analyzed by fluorescence microscopy. The goat IgG against chicken LPL bound to capillaries but not to larger blood vessels (arrows). DNA was stained with DAPI (*blue*). Scale bar, 50 μ m.