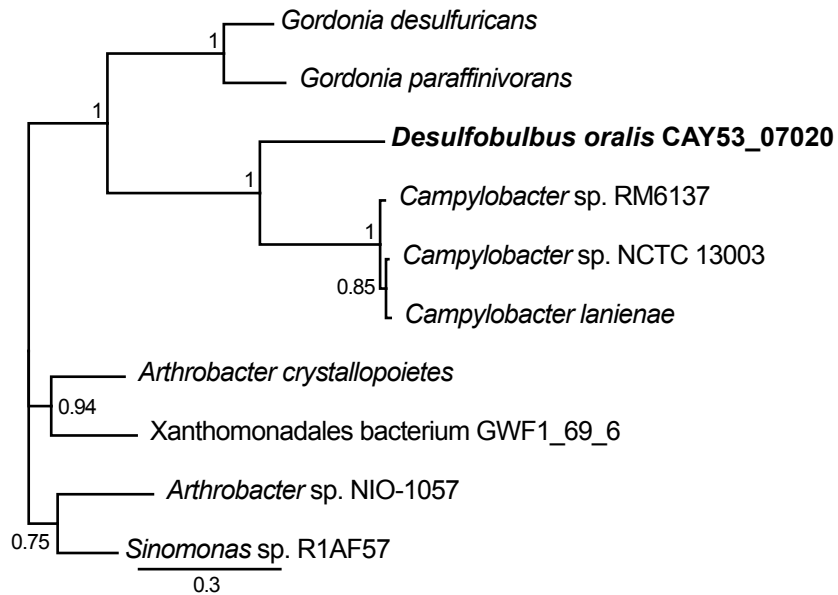
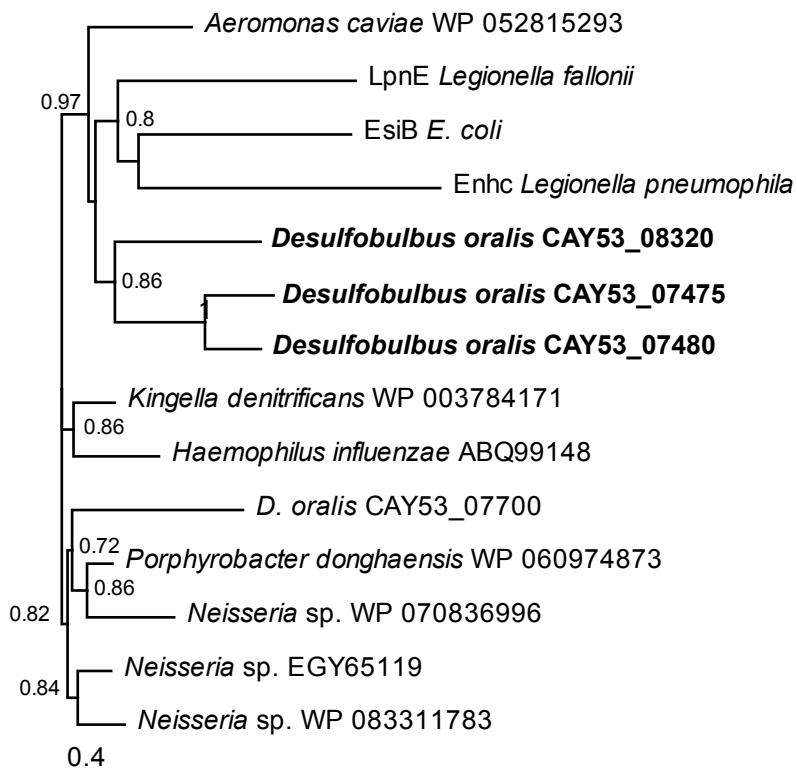


**Figure S1.** Phylogenetic analysis (FastTree) of selected horizontally-acquired genes in *D. oralis*. Closest sequence homologues from other bacteria (based on Blast) were used. For most genes proposed to have been horizontally acquired there were no close homologues in other *Desulfobulbus* genomes. The numbers indicate node support.

**succinate:acetate-CoA transferase**

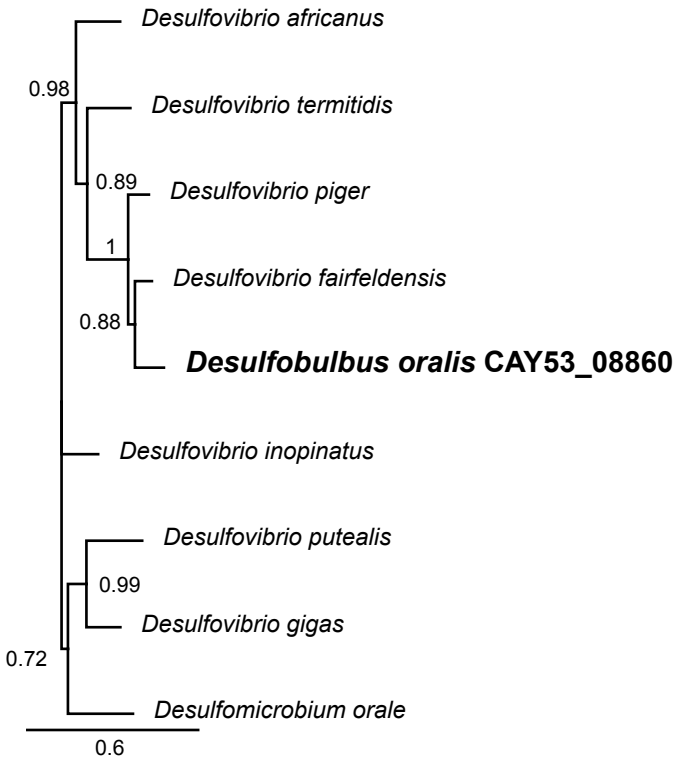


**Sel1 domain-containing proteins**

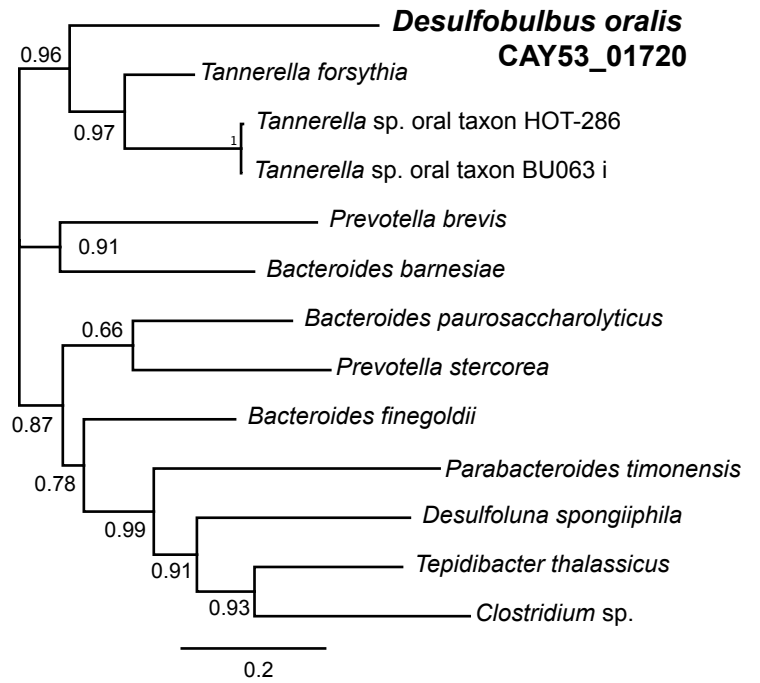


**Supplementary Figure 1 (cont.)**

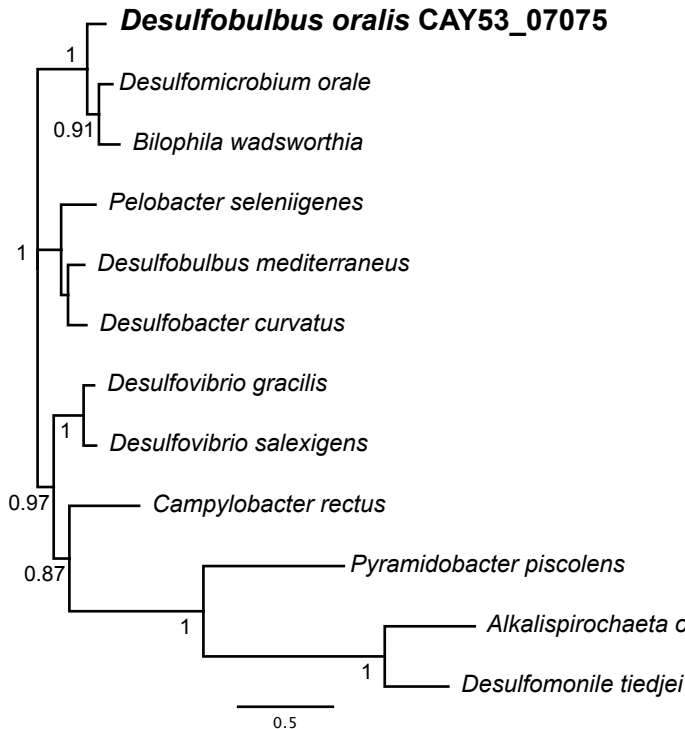
**Heterodisulfide reductase subunit A**



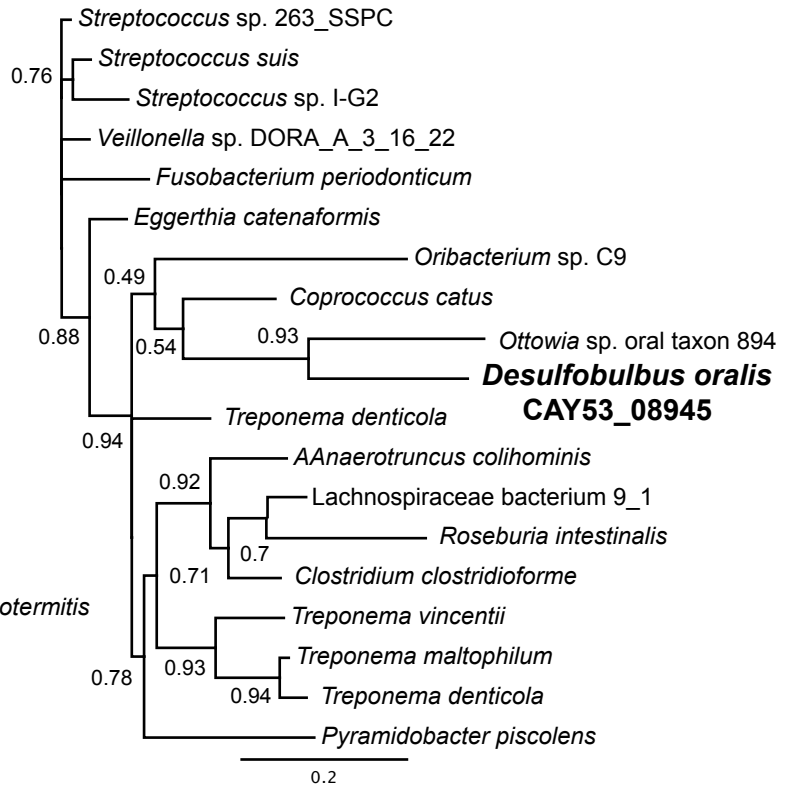
**NCS2 family permease**



**AAT family amino acid transporter**

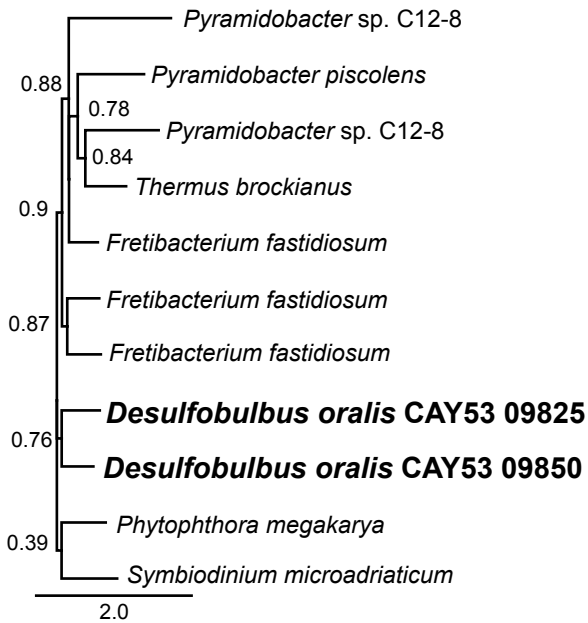


**Competence protein TfoX**

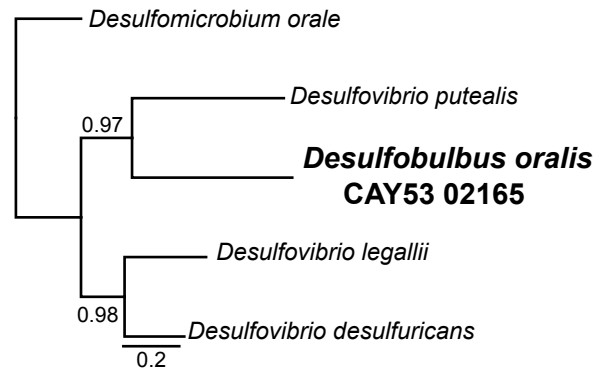


## Supplementary Figure 1 (cont.)

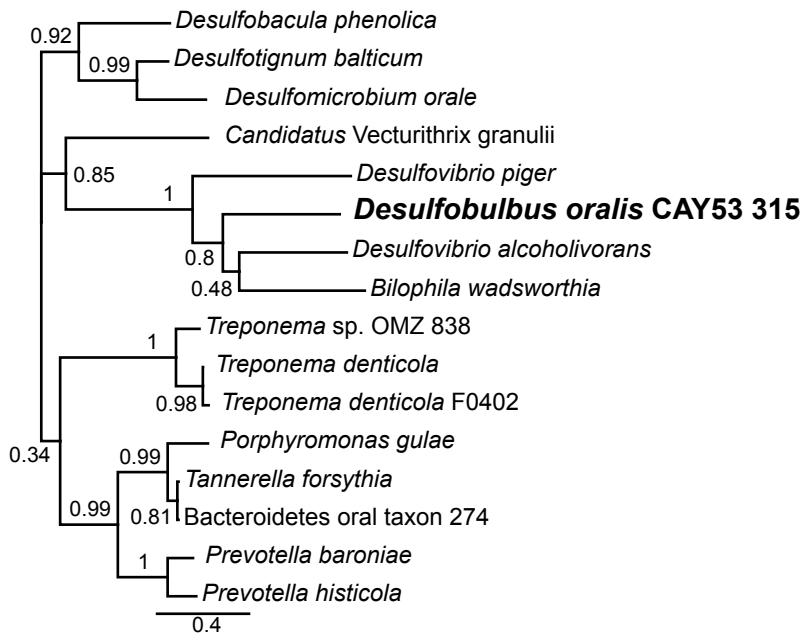
### Ankyrin repeat domain-containing proteins



### Bacterial conjugation protein TrbI



### Outer membrane lipoprotein-sorting protein



### Hemolysin-related protein

