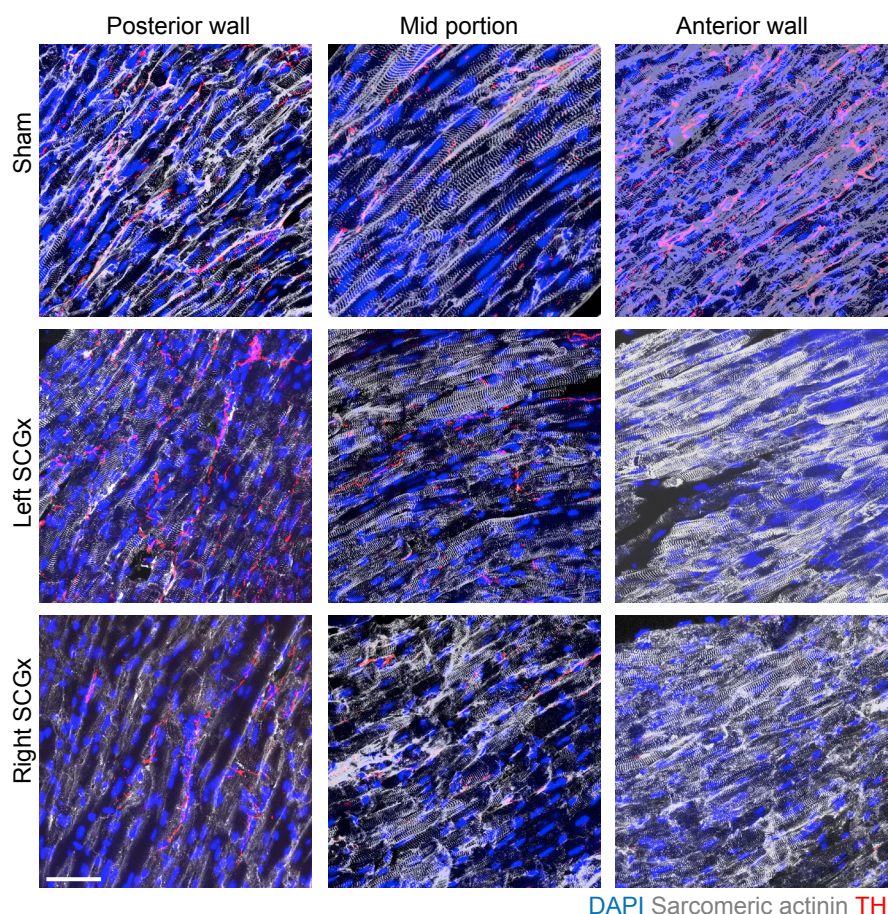
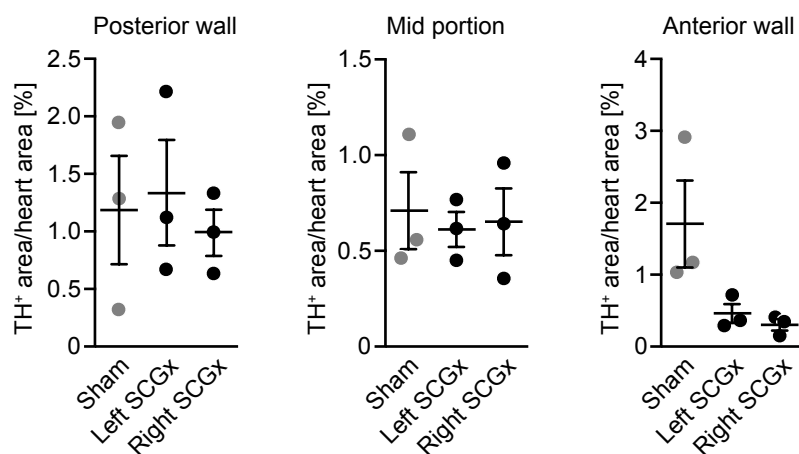


Supplementary Figure 1

A



B



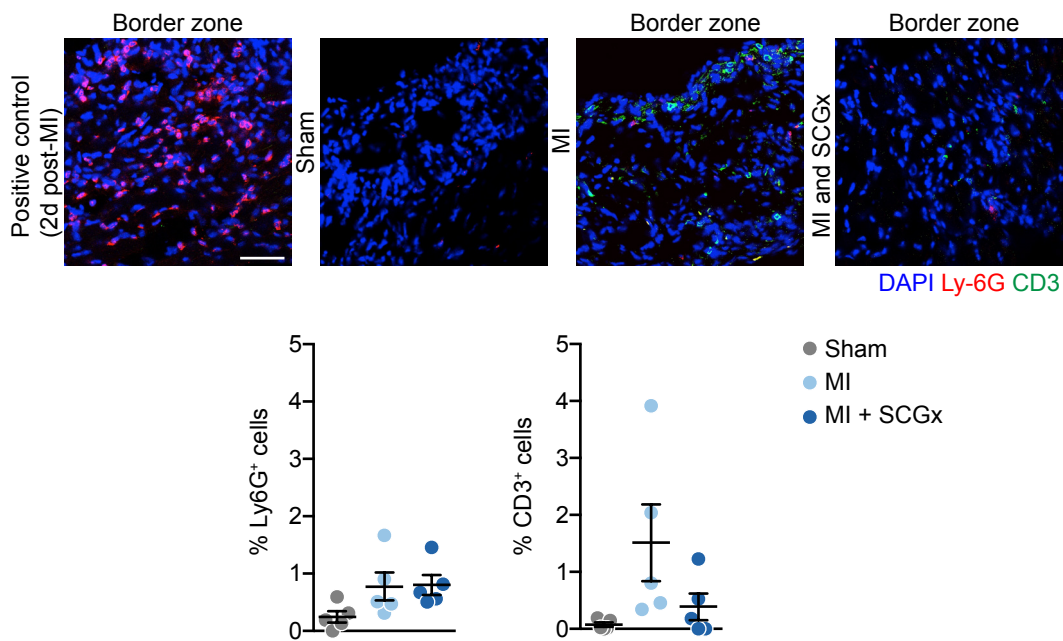
Supplementary Figure 1. Contribution of the SCG to sympathetic innervation of different heart regions.

(A) Immunofluorescence staining for sympathetic nerves (anti-TH) and cardiac myocytes (anti-sarcomeric actinin) 14 days after unilateral (i.e. left or right) removal of the respective SCG. Scale bar: 20 μ m.

(B) Quantification of the results.

Data are mean \pm SEM of n = 3 animals per group.

Supplementary Figure 2



Supplementary Figure 2. Effect of sympathetic denervation on cardiac inflammatory response.

(Upper panel) Immunofluorescence staining of neutrophils (anti-Ly6G) and T-cells (anti-CD3). Freshly infarcted tissue two days after induction of MI served as a positive control. Scale bar: 20 μ m. (Lower panel) Quantification of the results. Data are mean \pm SEM of n = 5 animals per group.

Supplementary Figure 3

	Sham	SCGx	MI	MI + SCGx
Mean Heart rate [bpm]	437.4	406.1	461.3	464.7
Std. Error of Mean	15.6	25.6	53.6	24.2
n-number	9	7	6	6

Supplementary Figure 3. Heart rate in the four experimental groups.