

Supplementary Appendix

This appendix has been provided by the authors to give readers additional information about their work.

Supplement to: Kyle RA, Larson DR, Therneau TM, et al. Long-term follow-up of monoclonal gammopathy of undetermined significance. *N Engl J Med* 2018;378:241-9. DOI: 10.1056/NEJMoa1709974

Table of Contents

Figure S1. Progression rate (per 100 person years) in patients with IgM MGUS.....3

Figure S2. Progression rate (per 100 person years) in patients with non-IgM MGUS.....4

Figure S1. Progression rate (per 100 person years) in patients with IgM MGUS

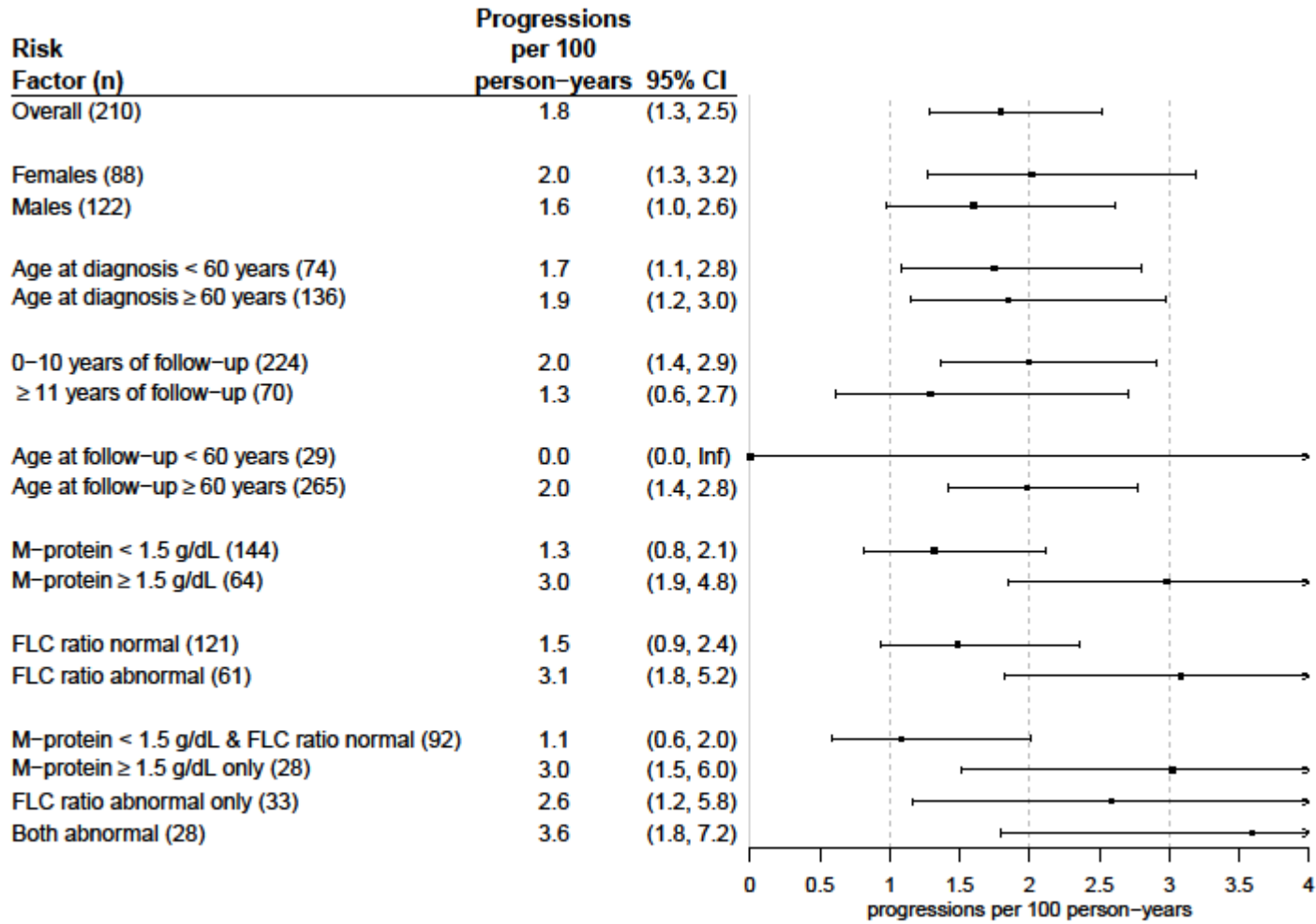


Figure S2: Progression rate (per 100 person years) in patients with non-IgM MGUS

