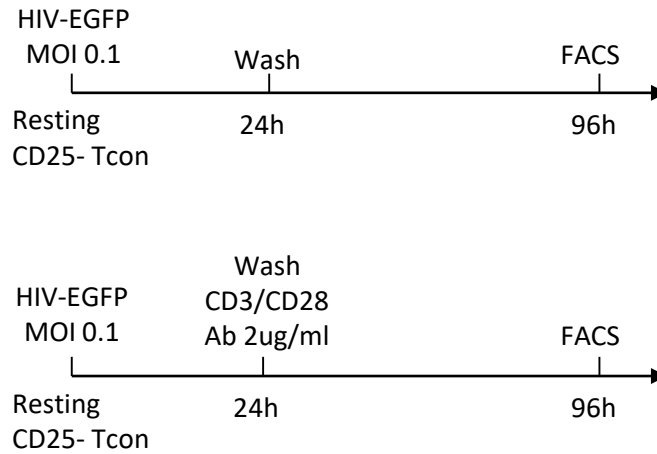
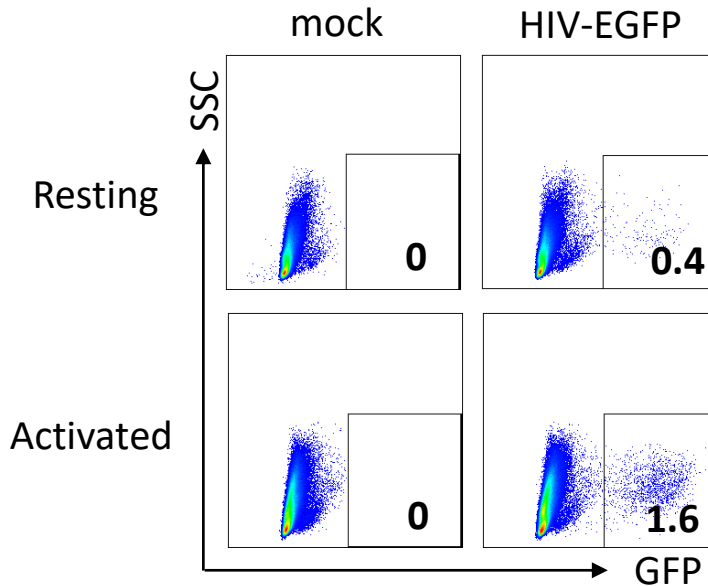


A



B



Supplementary Figure 12. Activated CD4 T cells increase the proportion of HIV-producing cells to infected cells. (A) Experiment scheme. Resting Tcons were inoculated with 0.1 MOI HIV-EGFP and culture for 24h, then cells were washed and cultured with or without CD3/CD28 antibodies (2µg/ml). At 96 hours, cells were analyzed for GFP positive Tcons. All medium contain 20U/ml IL-2. **(B)** Representative plot show percentage of GFP positive Tcons.