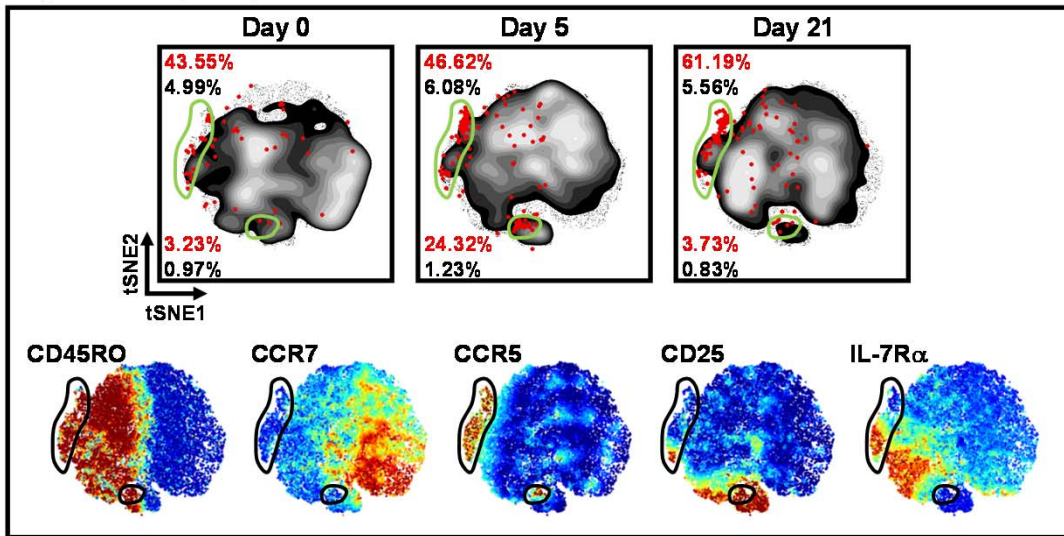
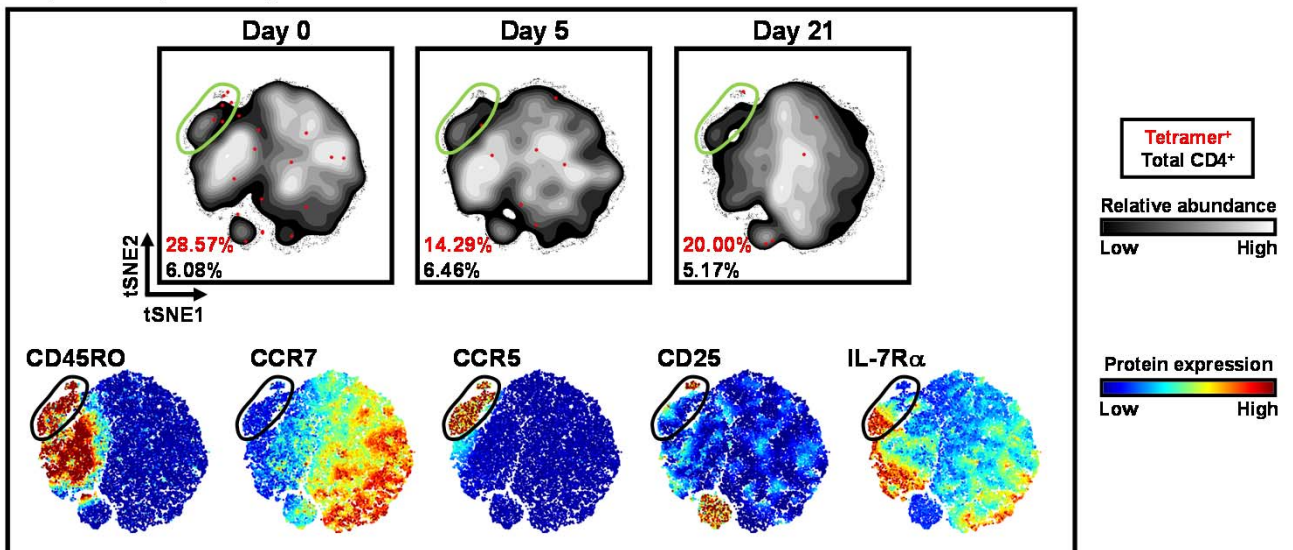


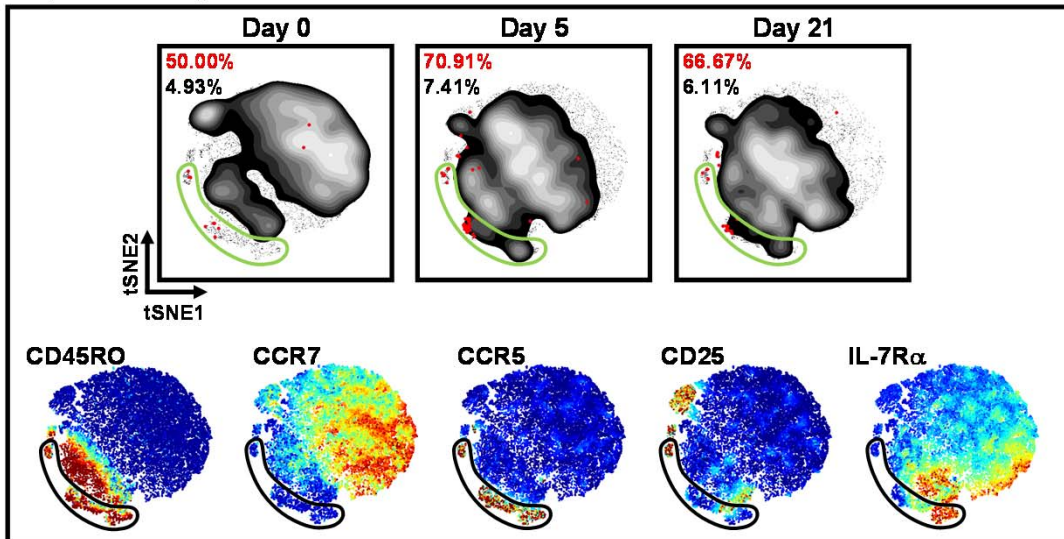
**Subject A (Infected, ↑ NAT)**



**Subject B (Infected, ↔ NAT)**



**Subject C (Uninfected)**



**Supplementary Figure 6. Complex Changes in Circulating Tetramer<sup>+</sup> and Total CD4<sup>+</sup> T Cell Populations in Infected and Uninfected Subjects.** High-dimensional mapping of T cell responses using t-SNE in three subjects with diverse infection and antibody profiles. Rainbow-colored t-SNE maps depict the intensity of expression for each marker tested. Gates denote CCR5<sup>+</sup> subsets.