

Supplemental Figures

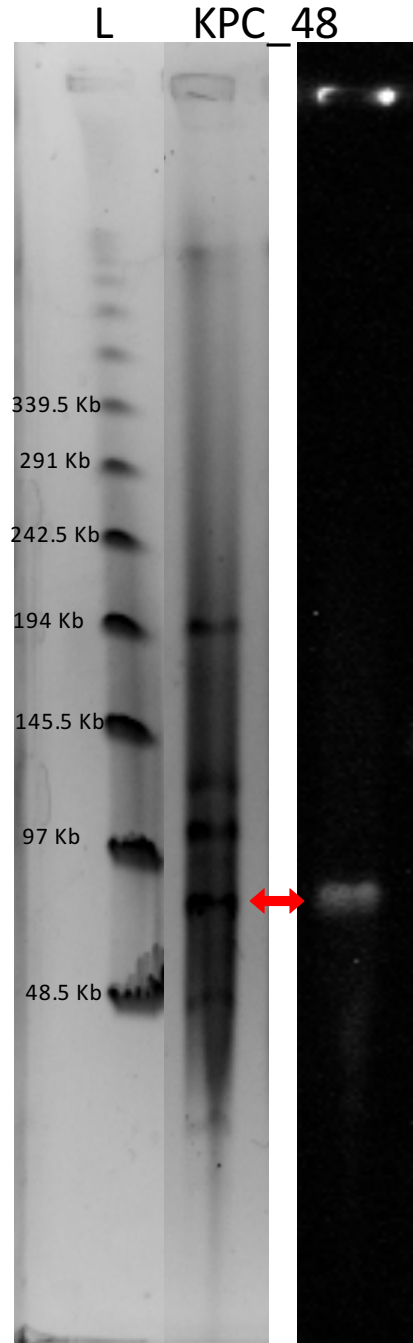


Figure S1. Plasmid location of *bla*_{KPC-2} on isolate KPC_48 confirmed by S1 pulsed-field gel electrophoresis (PFGE). Bacterial cells were embedded in agarose and lysed. Resulting DNA containing plugs were incubated with S1 nuclease to convert supercoiled plasmids into full-length linear molecules and subsequently separated by PFGE (left panel) including lambda ladder as reference (L). Finally, a Southern hybridization was performed using *bla*_{KPC-2} probe (right panel). Red arrow indicates the plasmid where *bla*_{KPC-2} is located.

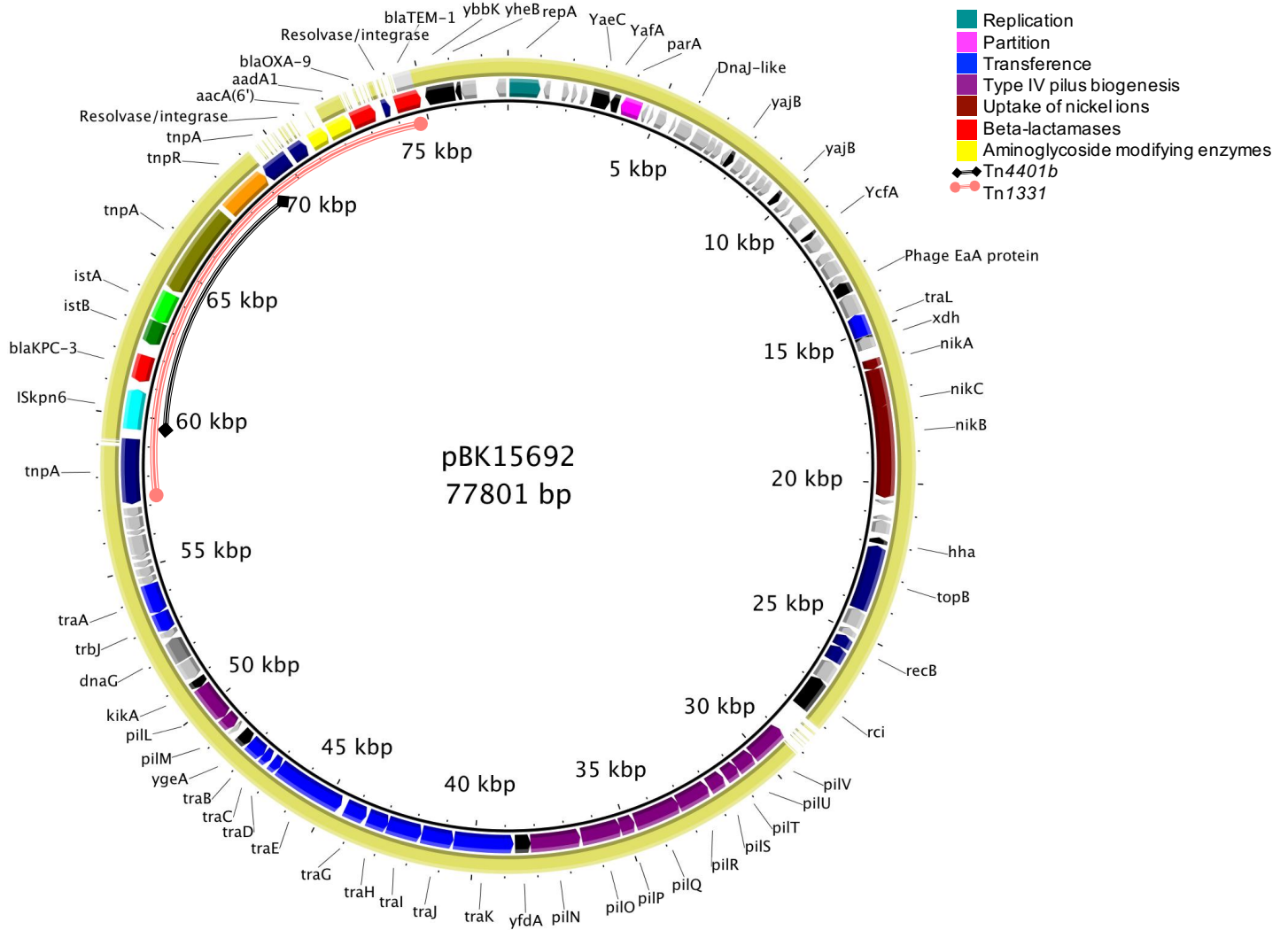
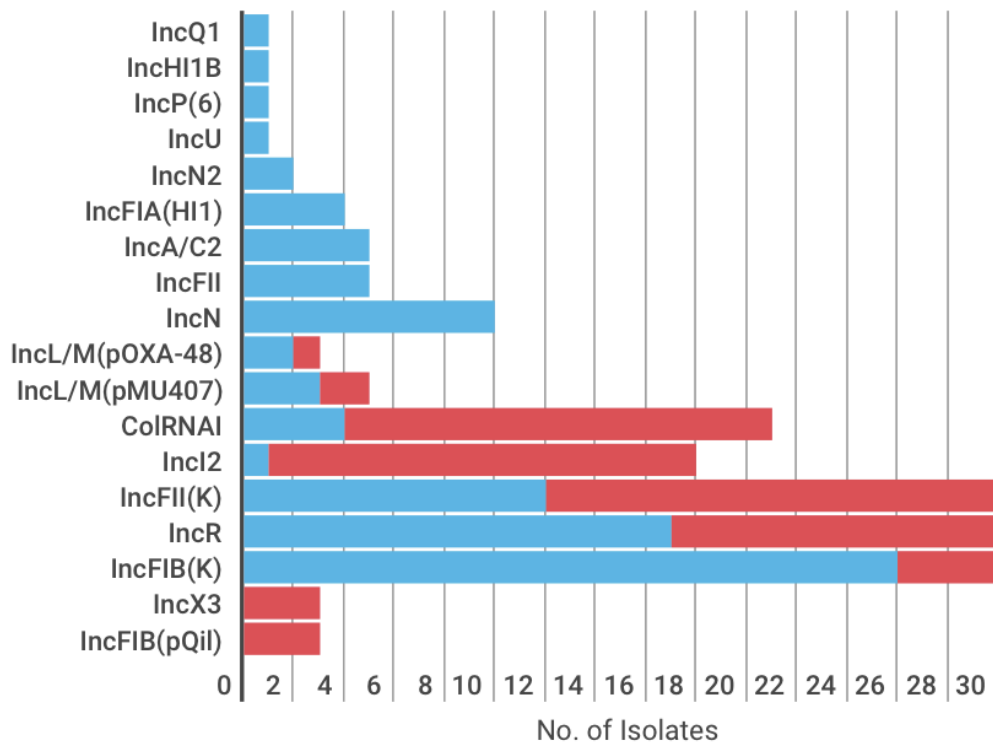


Figure S2. Comparison of the IncI2 plasmid pBK15692 (NC_022520.1) harboring *bla*_{KPC-3} with KPC_48 isolate. Outer ring (yellow) corresponds to the BLASTn result of KPC_48 contigs relative to the annotated (inside ring) pBK15692 plasmid reference.



● KPC-2 ● KPC-3

Figure S3. Plasmid replicons identified in the Colombian *bla_{KPC}* harboring *K. pneumoniae* isolates using PlasmidFinder.

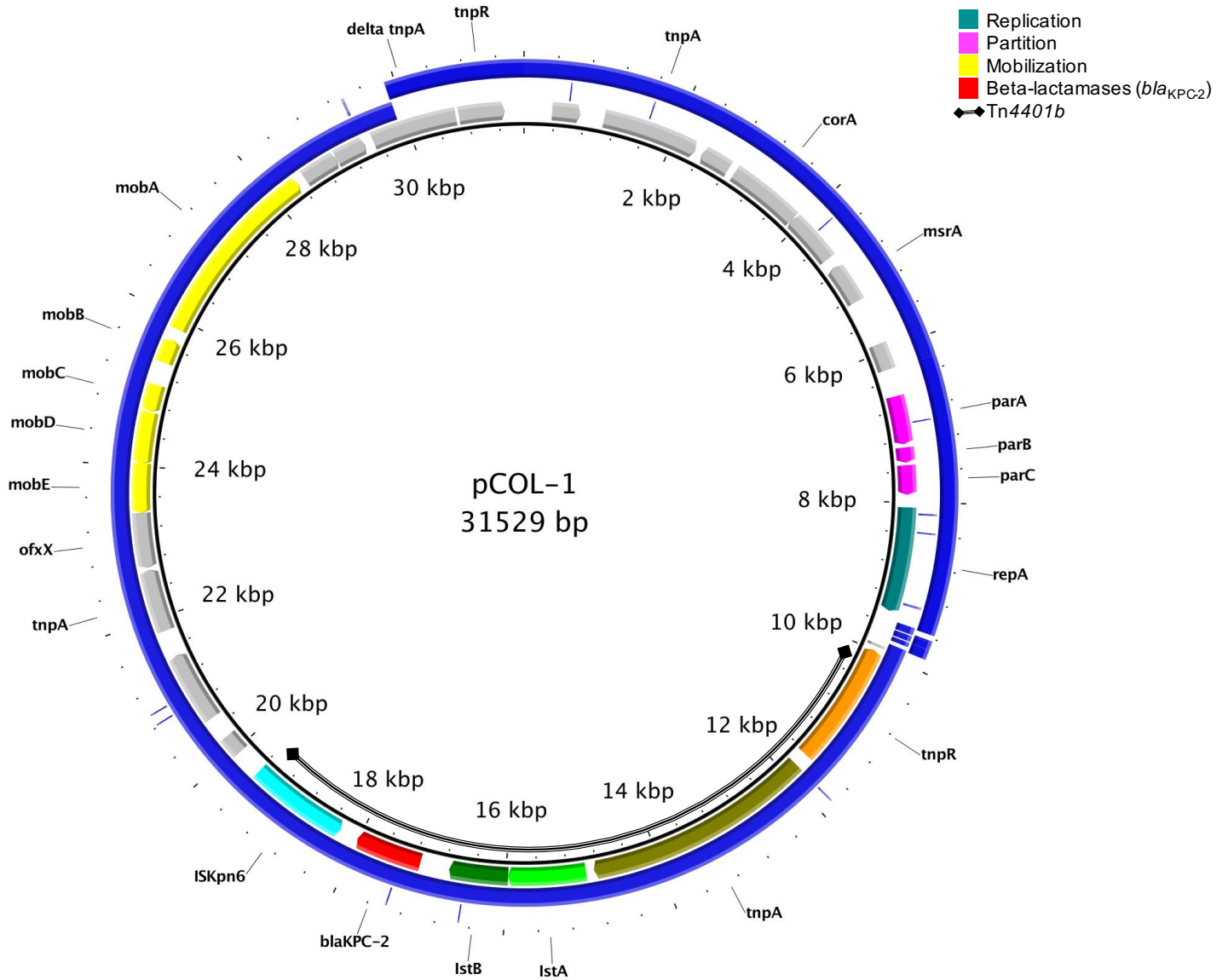


Figure S4. Comparison of the IncP6 plasmid pCOL-1 (NC_022346.1) harboring *bla*_{KPC-2} with COLKpn_66 isolate. Outer ring (blue) corresponds to the BLASTn result of COLKpn_66 contigs relative to the annotated (inside ring) pCOL-1 plasmid reference.

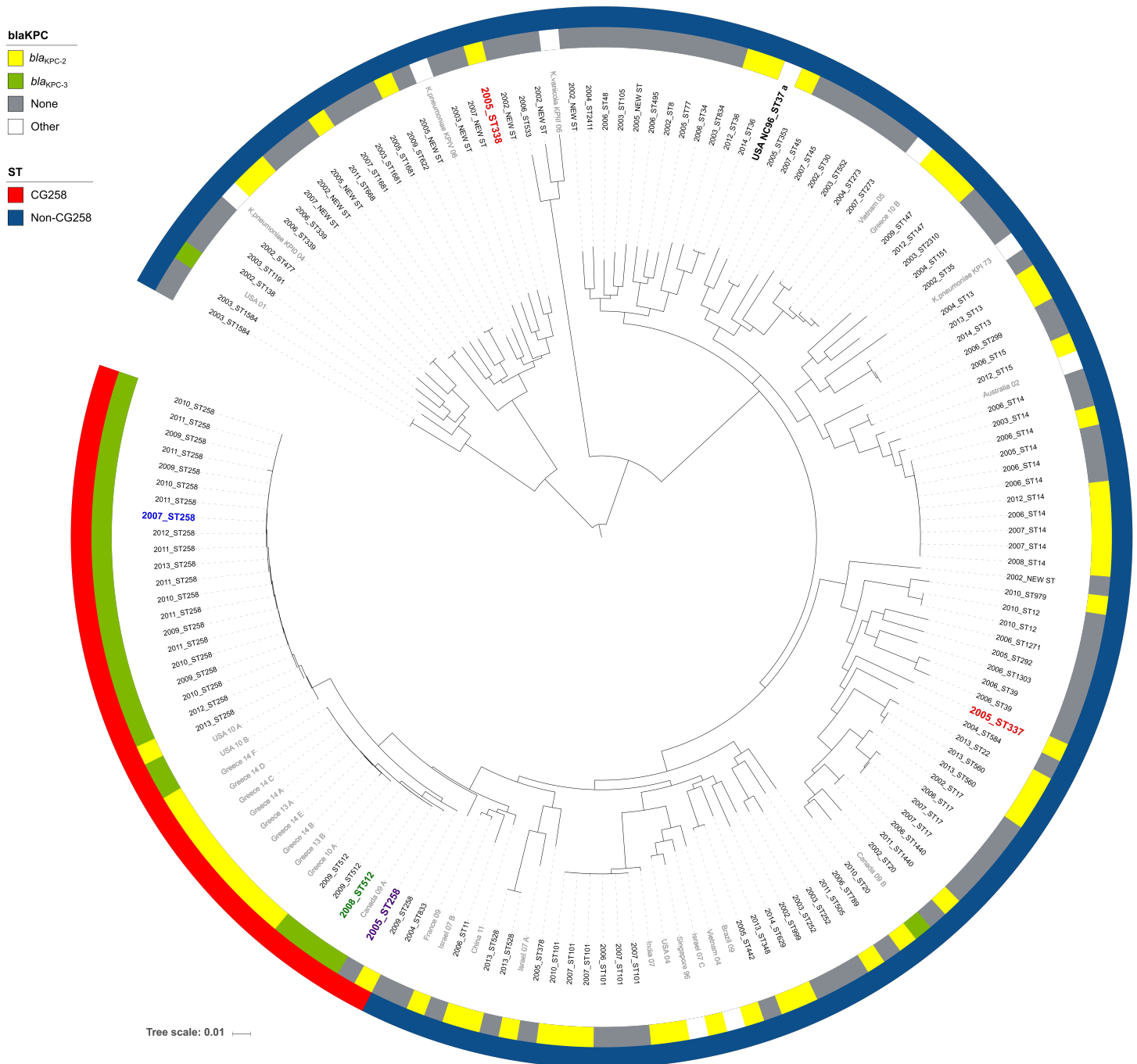


Figure S5. Circular representation of the phylogenetic (retaining annotation based exclusions) generated by RAxML and drawn using the online iTOL program, showing the genetic relationships among 133 Colombian *K. pneumoniae* isolates. Isolates in gray correspond to *K. pneumoniae* isolates from different parts of the world added as reference. Isolates in red correspond to the first two Colombian *K. pneumoniae* isolates described, carrying *bla*_{KPC-2}. Isolate in purple, corresponds to the oldest ST258 isolate in our collection. Isolate in blue, corresponds to the oldest ST258 KPC-Kpn isolate in our collection. Isolate in green corresponds to the index isolate from the “Israeli outbreak” in Medellin. ^a First KPC-Kpn reported in the world (North Carolina, USA)