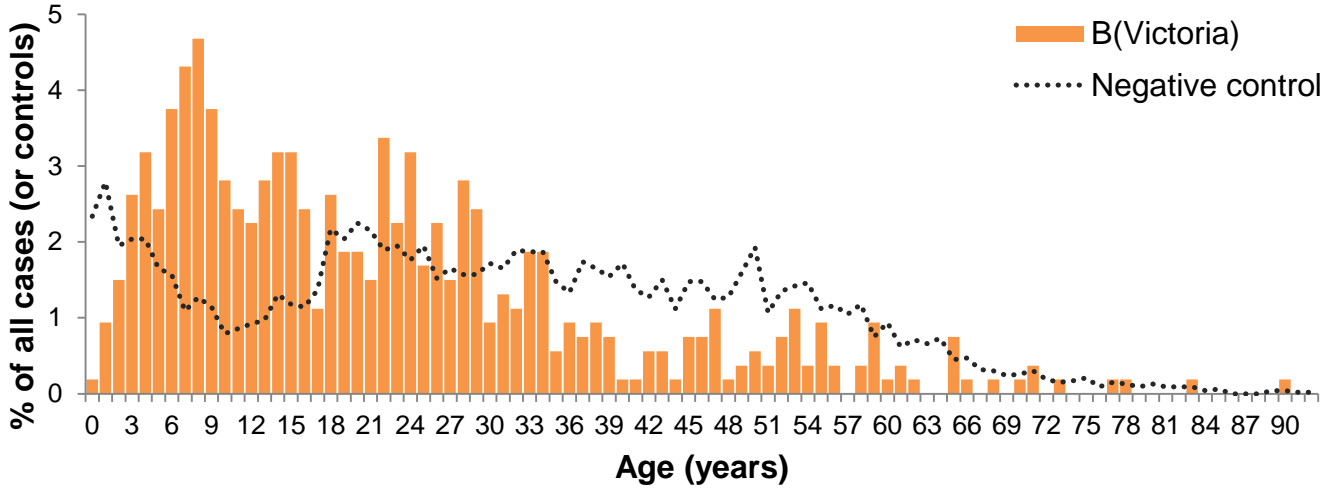


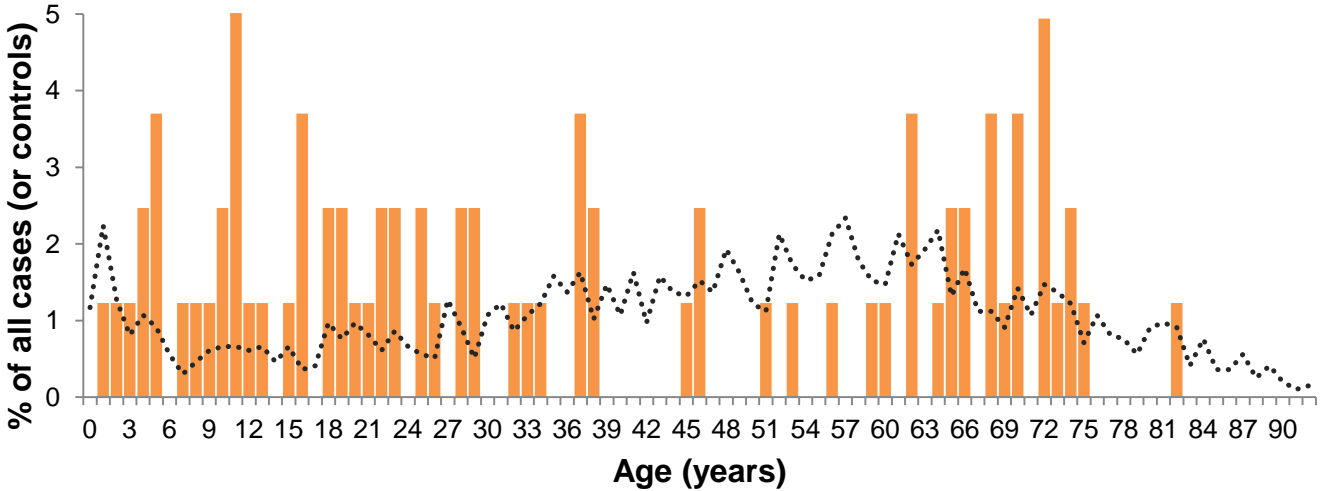
Supplemental Figure 1a. Percent distribution of influenza B(Victoria) cases and test-negative controls by single-year age group* stratified by vaccination status,† Canadian SPSN, 2010-11 to 2015-16

a B(Victoria)

Unvaccinated



Vaccinated

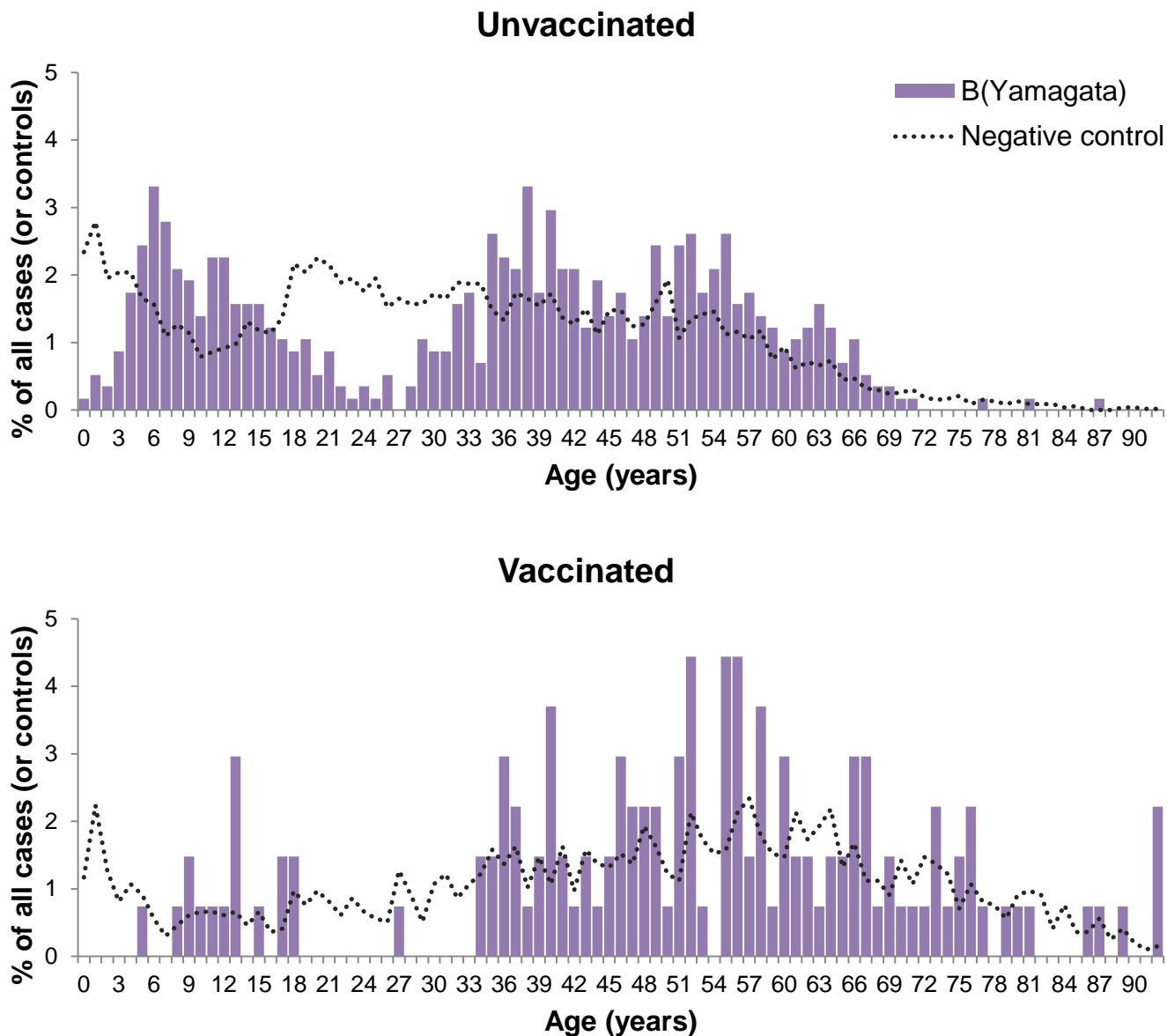


*The percentage of all B(Victoria) cases belonging to a given age (in years) is displayed as a bar graph; the same information for test-negative controls is superimposed as a dotted line for comparison purposes to indicate the sampling distribution by age in the overall SPSN sample

† Vaccination status defined as receipt of current season's influenza vaccine ≥2 weeks before influenza-like illness (ILI) onset. Participants vaccinated <2 weeks since ILI onset and those with unknown vaccination status or timing were included in the primary analysis but are excluded from Supplemental Figure 1.

Supplemental Figure 1b. Percent distribution of influenza B(Yamagata) cases and test-negative controls by single-year age group* stratified by vaccination status,† Canadian SPSN, 2010-11 to 2015-16

b B(Yamagata)



*The percentage of all B(Victoria) cases belonging to a given age (in years) is displayed as a bar graph; the same information for test-negative controls is superimposed as a dotted line for comparison purposes to indicate the sampling distribution by age in the overall SPSN sample

† Vaccination status defined as receipt of current season's influenza vaccine ≥ 2 weeks before influenza-like illness (ILI) onset. Participants vaccinated < 2 weeks since ILI onset and those with unknown vaccination status or timing were included in the primary analysis but are excluded from Supplemental Figure 1.