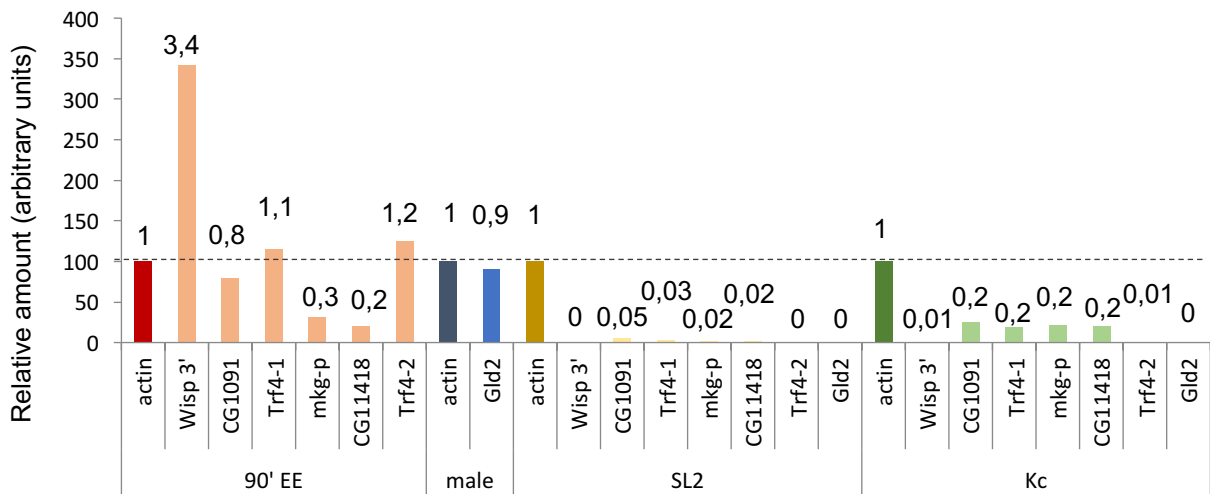


Coll_Fig S3



Expression of cytoplasmic poly(A) polymerases in *Drosophila* embryos and cultured cells. The levels of mRNAs encoding different cytoplasmic poly(A) polymerases in 90 min embryo extracts (90' EE), SL2 and Kc cells were assessed by RT-qPCR, and the data represented relative to actin mRNA levels. Extracts from adult males were used as control for Gld-2. Numbers on top of each bar indicate the amount relative to actin.