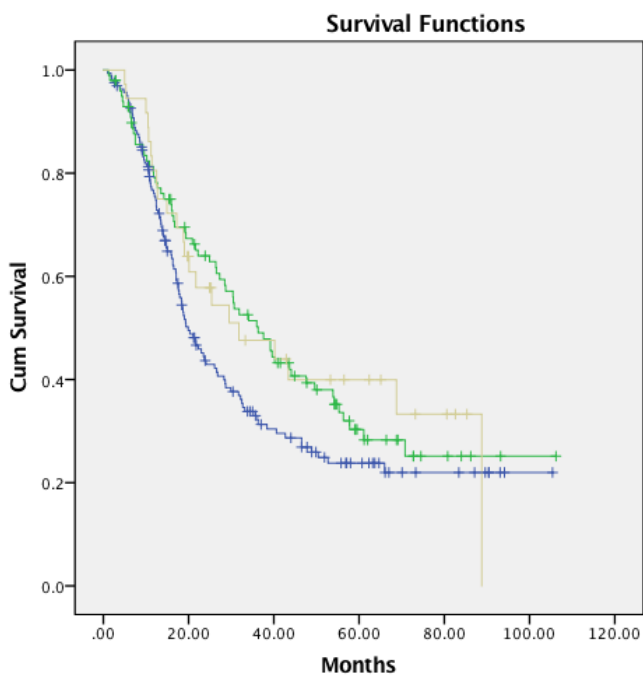
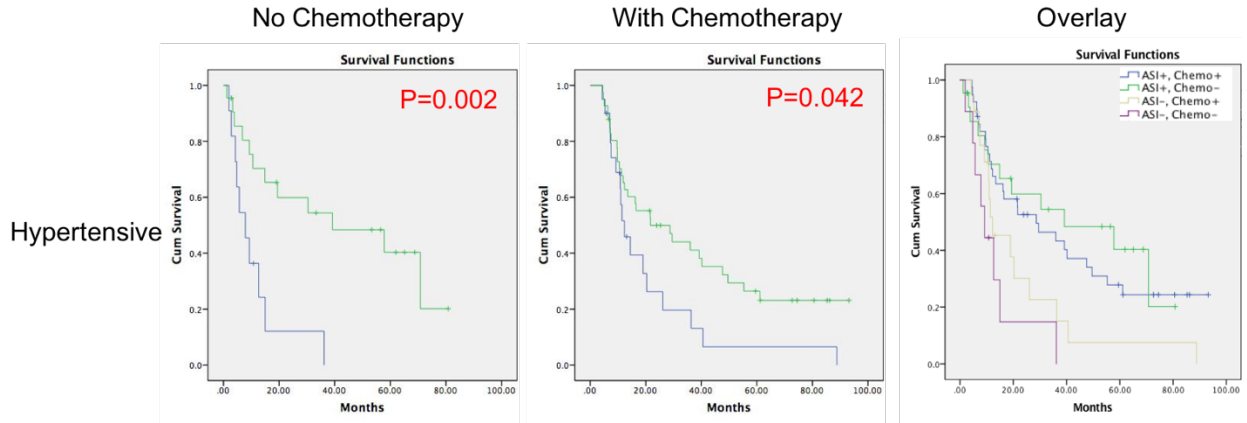


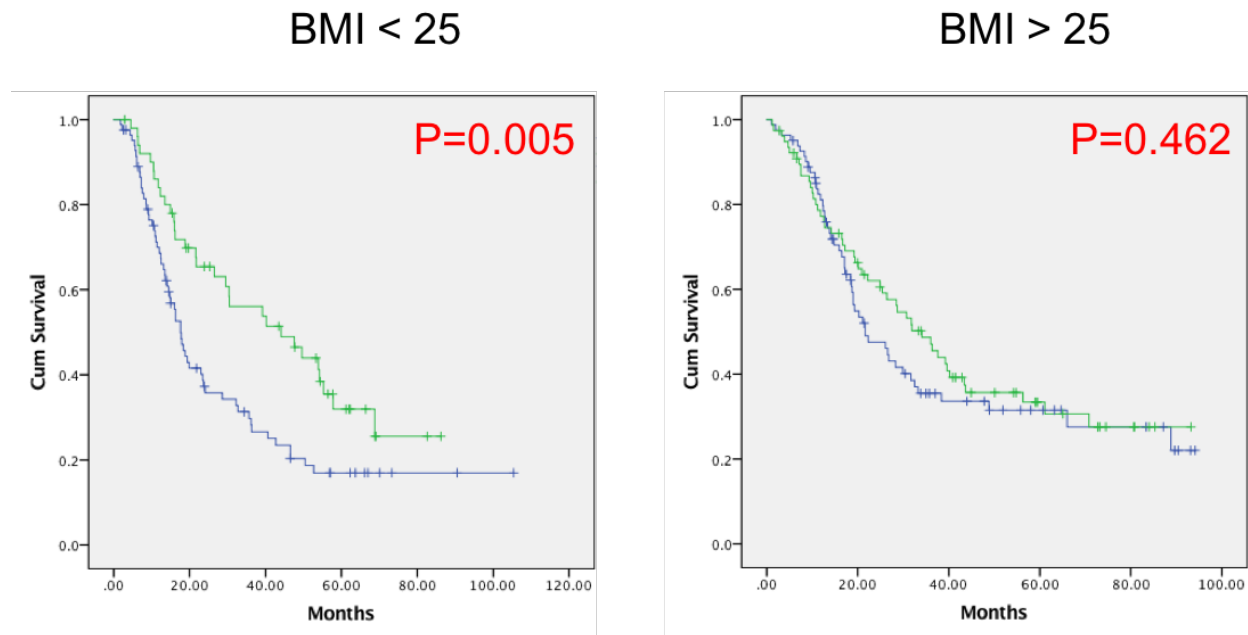
Supplementary Figure 1: Clinical status of patients included in the analysis: Group A patients (n=310) did not receive resection due to metastatic disease; Group B patients (n=185) did not receive resection due to locally advanced disease; Group C patients (n=299) presented with resectable disease and successfully underwent primary tumor resection.



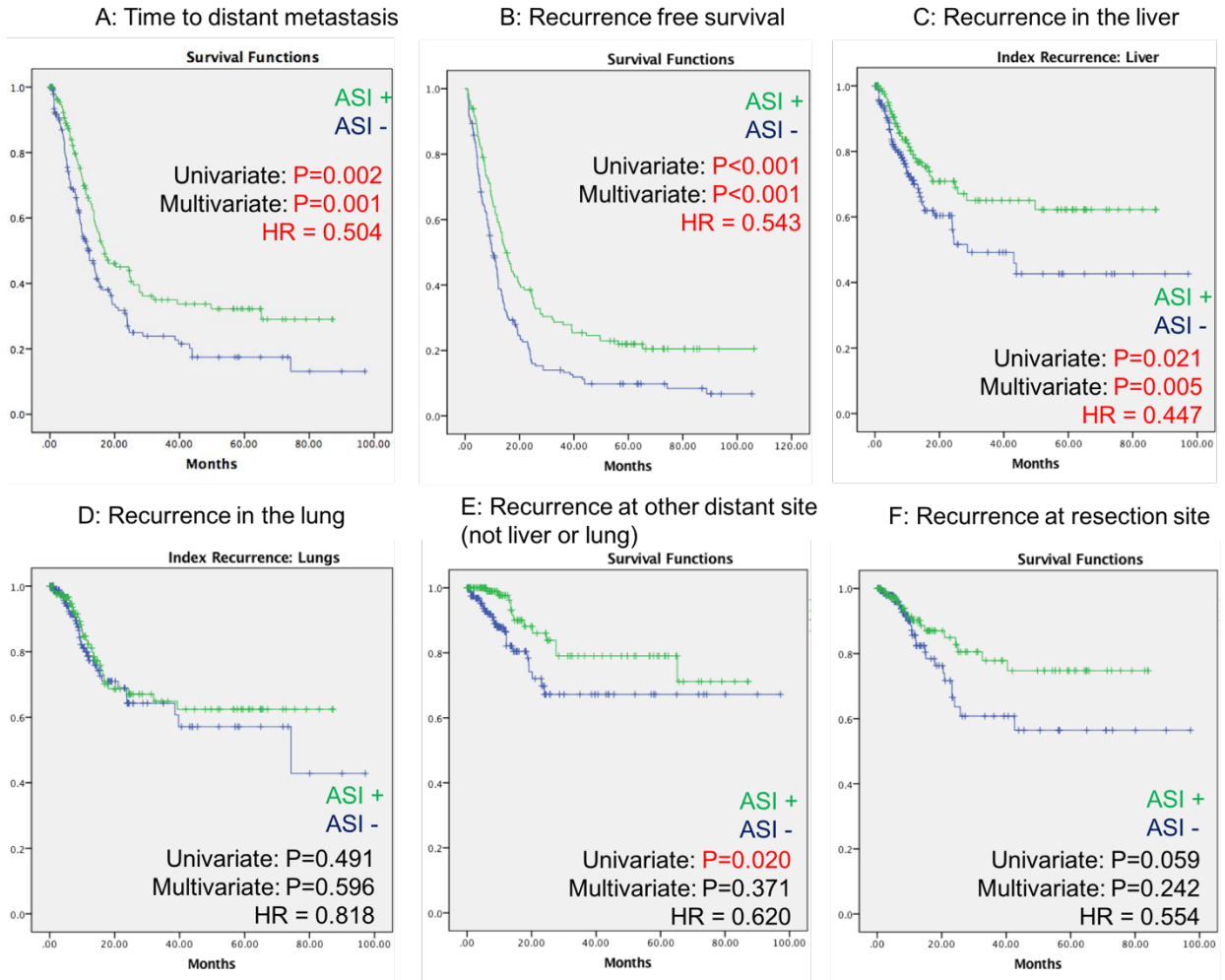
Supplementary Figure 2: Unadjusted Kaplan Meier survival curves of patients who received ACEi (green), ARB (yellow) versus control group (blue). The survival benefit from ACEi (green) and ARB (yellow) is not distinguishable (p=0.9).



Supplementary Figure 3: Chronic ASI use in resected patients with hypertension. left: patients who did not receive chemotherapy or radiation therapy (blue: non-ASI, green: ASI); middle: patients with resected tumor who received chemotherapy (blue: non-ASI, green: ASI); right: overlay of the previous two survival curves. (Detailed pair-wise comparison, see supplementary table 3)



Supplementary Figure 4: Unadjusted Kaplan Meier survival curve of all resected patients stratified by BMI. left: BMI < 25 (n=139); right: BMI > 25 (n=160). Green: chronic ASI use; Blue: control.



Supplementary Figure 5: Unadjusted Kaplan Meier curves for disease recurrence. A: time to distant metastasis, B: Recurrence free survival, C: time to liver metastasis as index recurrence, D: time to lung metastasis as index recurrence, E: time to metastasis at other body sites as index recurrence, F: time to local recurrence.