

Nsdhl^{fl/fl}/*Ptch1*^{+/-}

GFAP-CreER^{T2}/*Nsdhl*^{fl/fl}/*Ptch1*^{+/-}

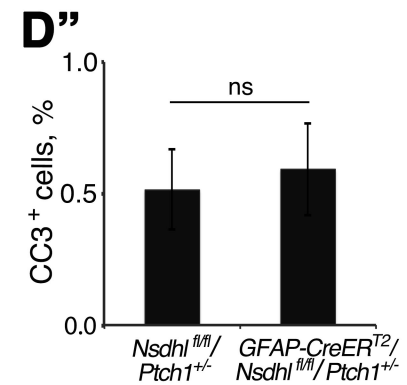
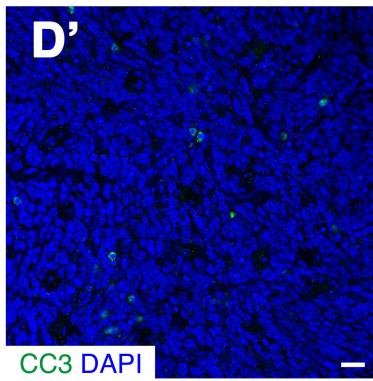
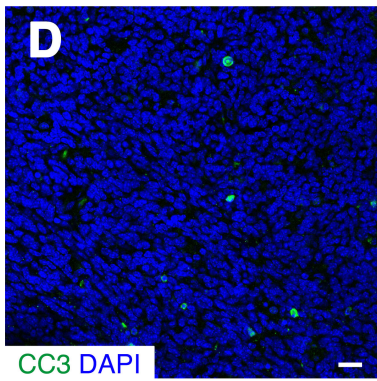
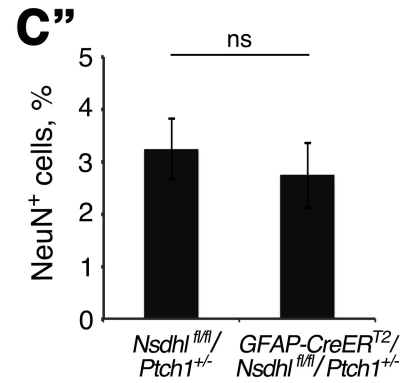
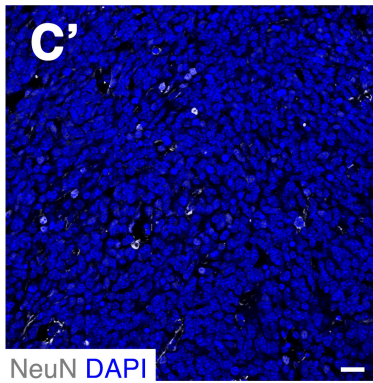
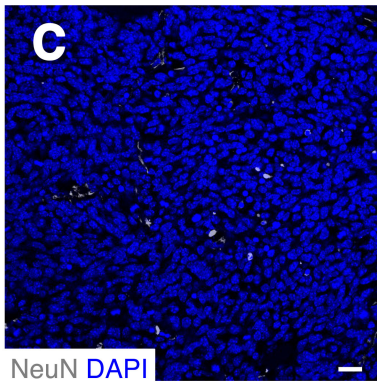
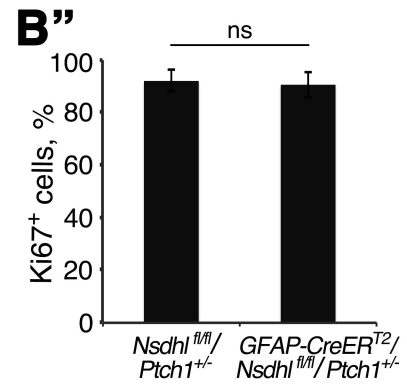
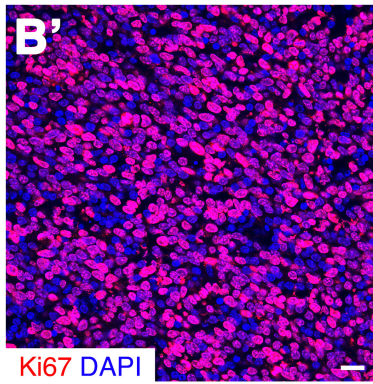
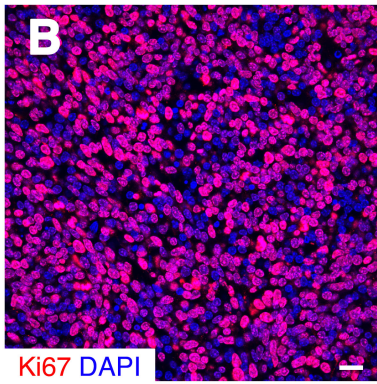


Fig. S2. Proliferation of MB cells does not rely on astrocyte-derived cholesterol.

(A) Sagittal section of MB tissue from *Ptch1*^{+/-} mice were immunostained against Zic1 and GFAP. (B-D'') Immunofluorescence analysis of Ki67 (B-B''), NeuN (C-C'') and CC3 (D-D'') in tumor tissue from *Nsdhl*^{fl/fl}/*Ptch1*^{+/-} mice (B, C, D), *GFAP-CreER*^{T2}/*Nsdhl*^{fl/fl}/*Ptch1*^{+/-} mice (B', C', D') after tamoxifen treatment, and percentage of Ki67, NeuN and CC3 positive cells in above sections respectively (B'', C'', D''). MB tissues were counterstained with DAPI. Scale bars 10 μm.