

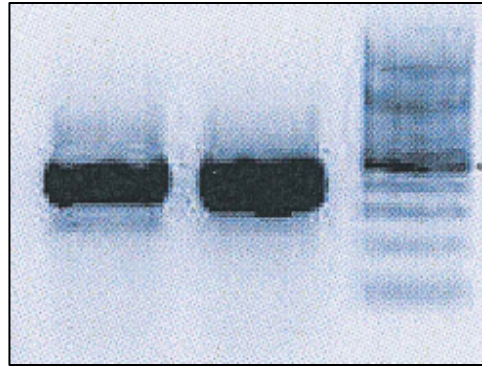
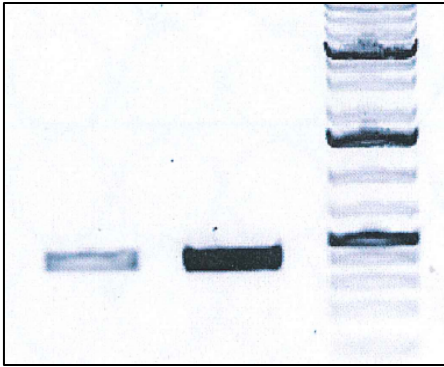
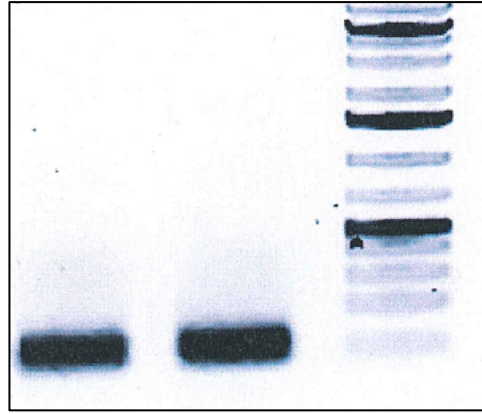
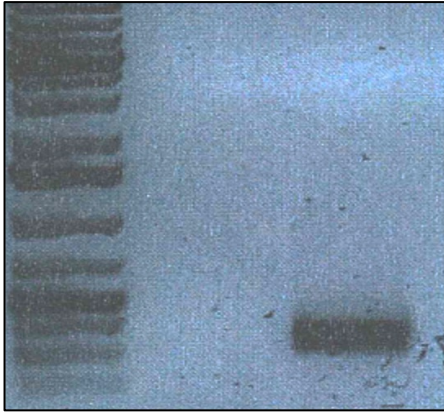
Supplementary material for

FYVE domain-containing protein ZFYVE28 regulates EGFR-signaling in podocytes but is not critical for the function of filtration barrier in mice

Sonia Zambrano Sevilla¹, Patricia Q Rodriguez¹, Jing Guo¹, Katja Möller-Hackbarth¹, Angelina Schwarz¹, Jaakko Patrakka¹

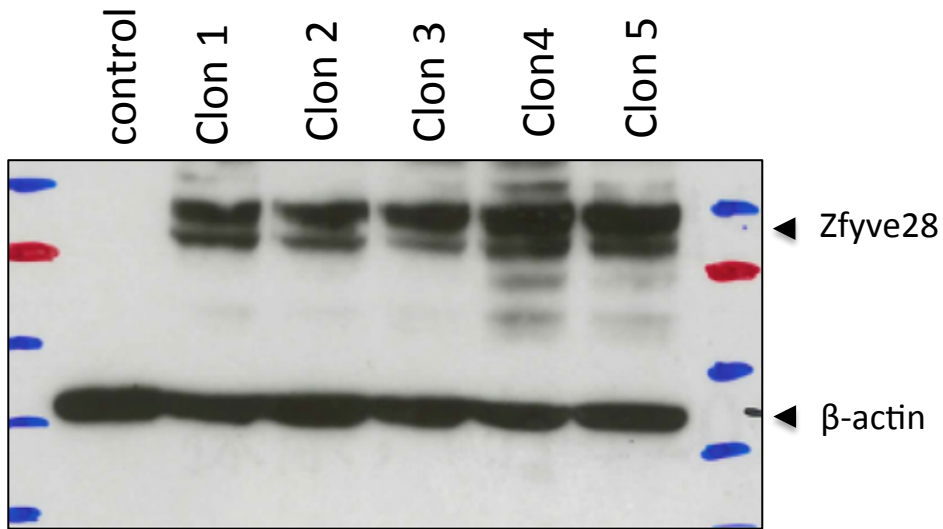
¹KI/AZ Integrated CardioMetabolic Center, Department of Laboratory Medicine, Karolinska Institutet at Karolinska University Hospital Huddinge, Stockholm, Sweden

Supplement figure 1



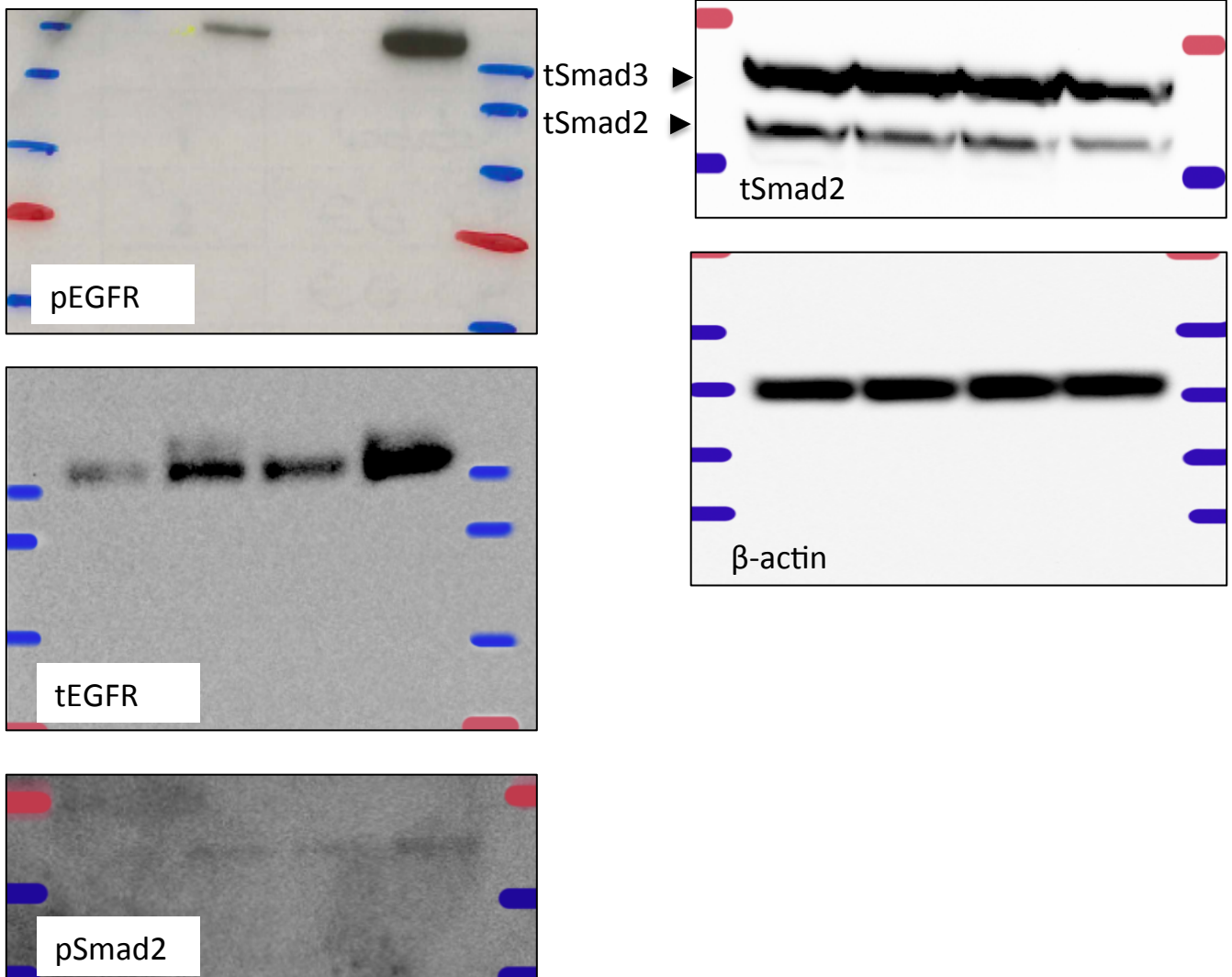
Supplementary figure 1. Full image of the gels from figure 4. The marks correspond to the GeneRuler 100bp DNA Ladder, Thermo Fisher.

Supplement figure 2



Supplementary figure 2. Western blotting analysis of ZFYVE28 in control and over-expressing human podocytes clones. The marks correspond to the PageRuler prestained protein ladder 10-170 KDa (Fermentas)

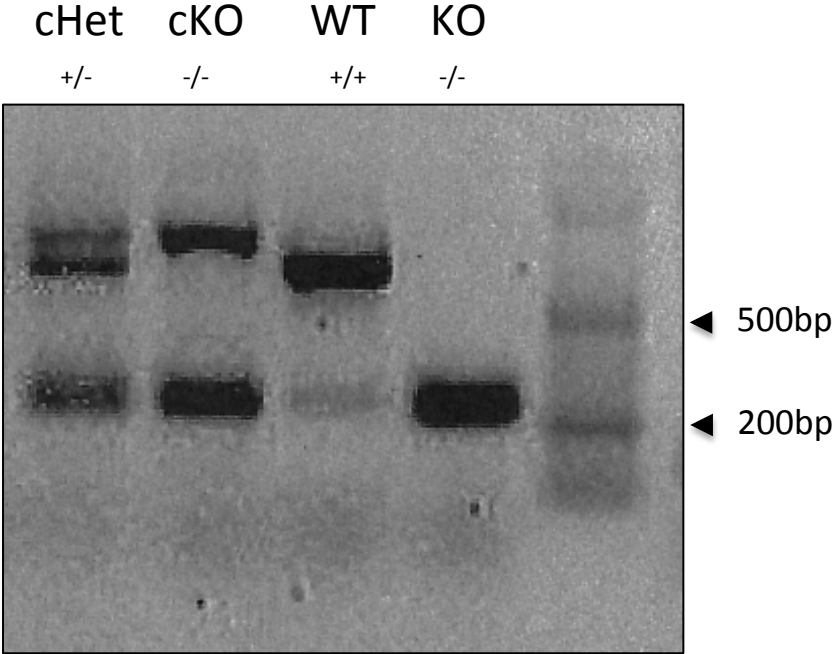
Supplement figure 3



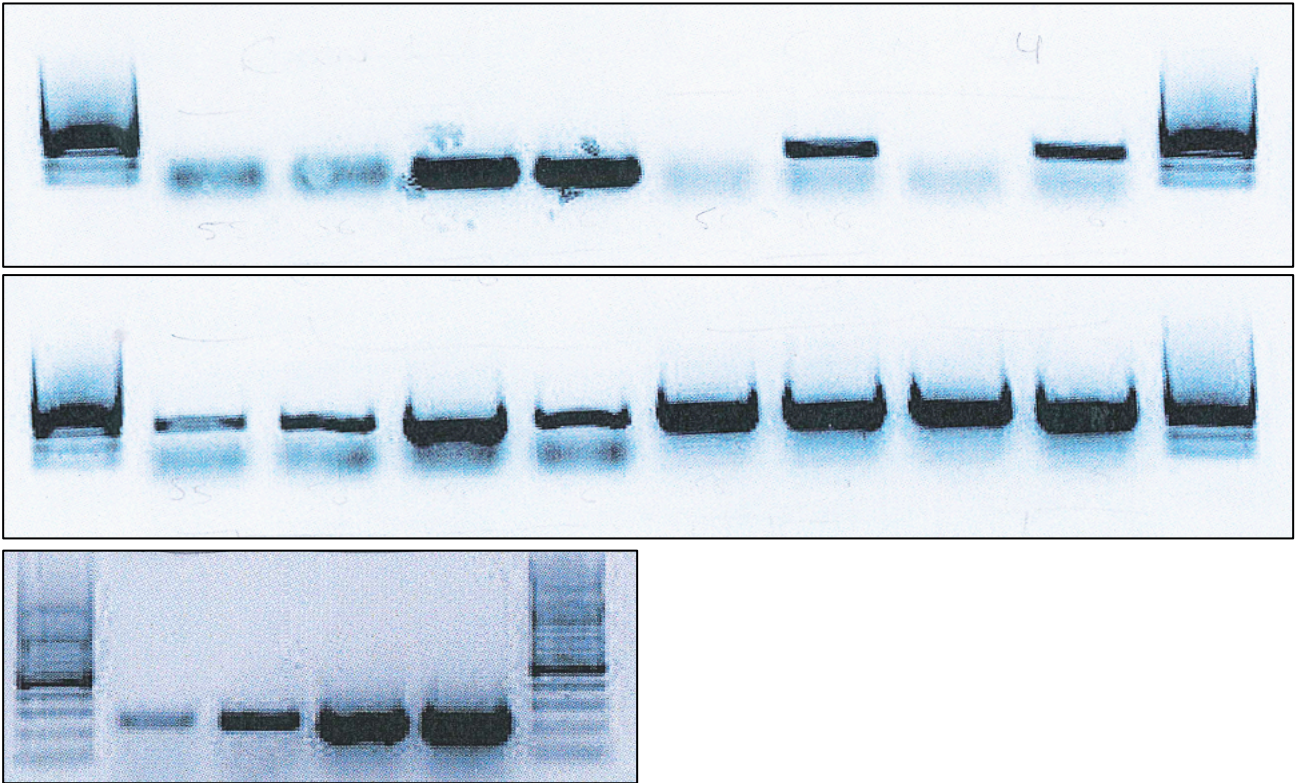
Supplementary figure 3. full image of the blots from figure 3. The marks correspond to the PageRuler prestained protein ladder 10-170 KDa (Fermentas)

Supplement figure 4

A

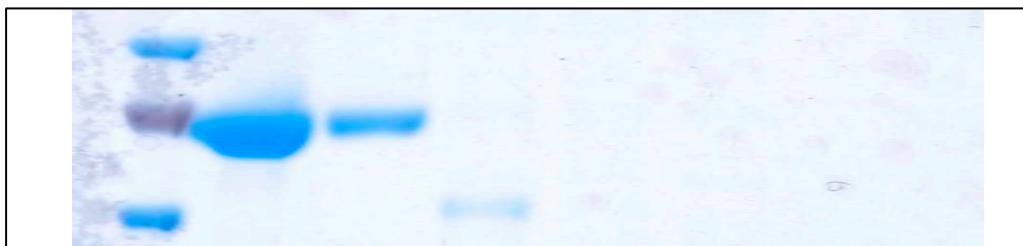


B



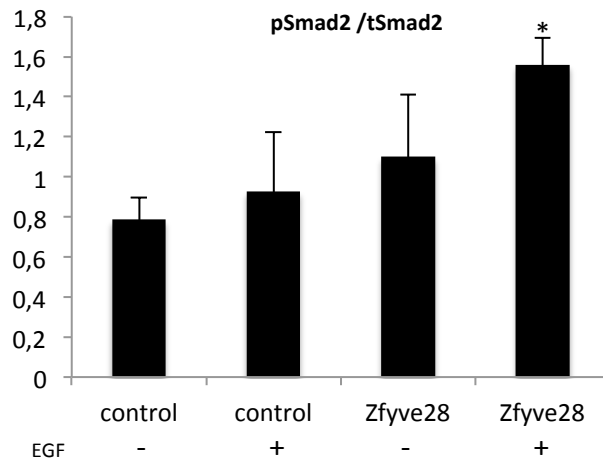
Supplementary figure 4. (A-B) Full image of the gels from figure 4. The marks correspond to the GeneRuler 50bp DNA Ladder, Thermo Fisher.

Supplement figure 5



Supplementary figure 5. full image of the gel from figure 5. The marks correspond to the PageRuler prestained protein ladder 10-170 KDa (Fermentas)

Supplement figure 6



Supplementary figure 6. Ratio pSmad2/tSmad2. The standard error has been calculated from 3 independent experiment.